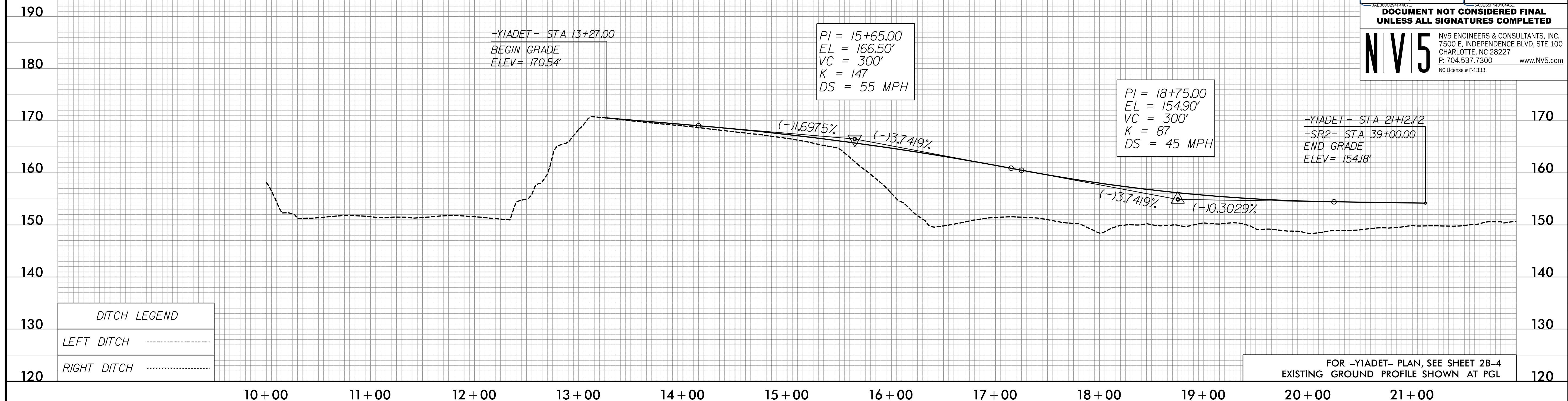


5/28/22

-Y1ADET-

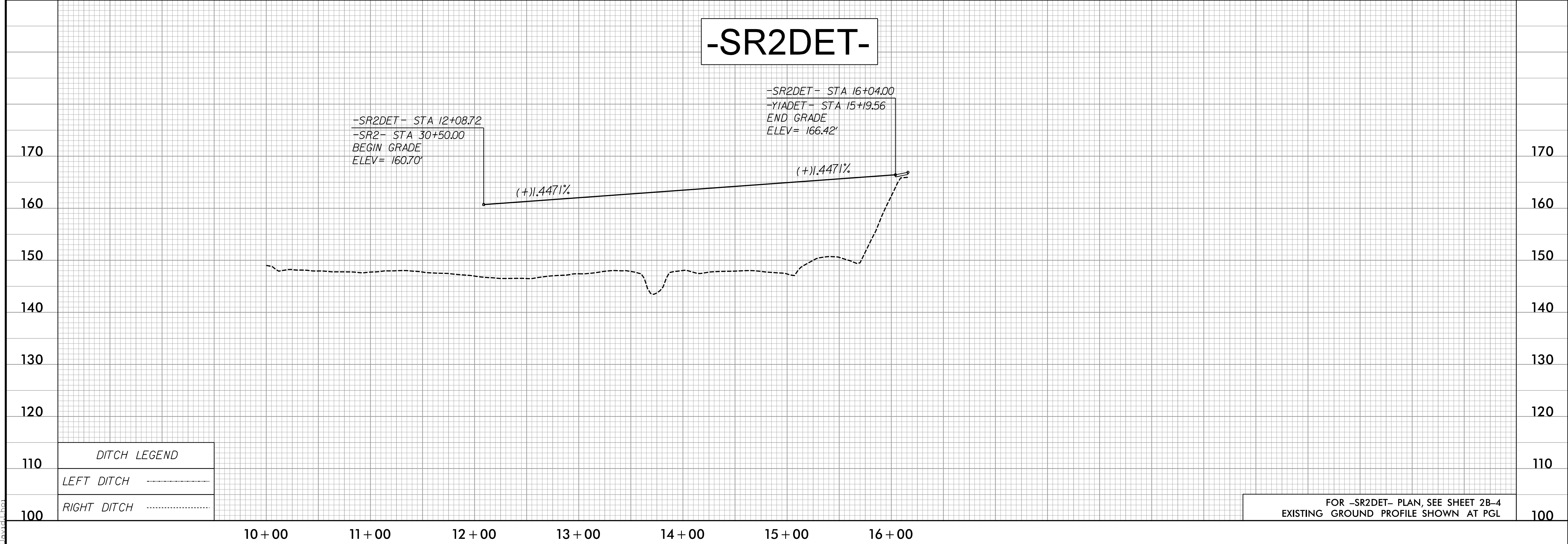
PROJECT REFERENCE NO. 1-5987A	SHEET NO. 96
ROADWAY DESIGN ENGINEER 5/18/2022	HYDRAULICS ENGINEER 5/19/2022
DocuSigned by: Steve Anthony Duan	DocuSigned by: Will Matthews
DOCUMENT NOT CONSIDERED FINAL UNLESS ALL SIGNATURES COMPLETED	
<small>NV5 ENGINEERS & CONSULTANTS, INC. 7500 E. INDEPENDENCE BLVD, STE 100 CHARLOTTE, NC 28227 P: 704.537.7300 www.NV5.com NC License # F-1333</small>	



DITCH LEGEND	
LEFT DITCH	-----
RIGHT DITCH	-----

FOR -Y1ADET- PLAN, SEE SHEET 2B-4
EXISTING GROUND PROFILE SHOWN AT PGL

-SR2DET-



DITCH LEGEND	
LEFT DITCH	-----
RIGHT DITCH	-----

FOR -SR2DET- PLAN, SEE SHEET 2B-4
EXISTING GROUND PROFILE SHOWN AT PGL

3/30/2022
P:\Projects\15987A\RDY_PSH_PFL_96.dgn
David