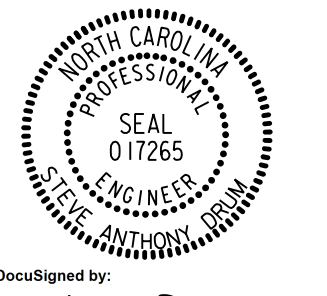
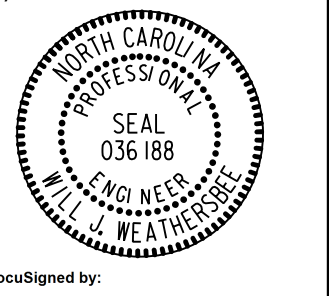



5/28/22

# -DR2-

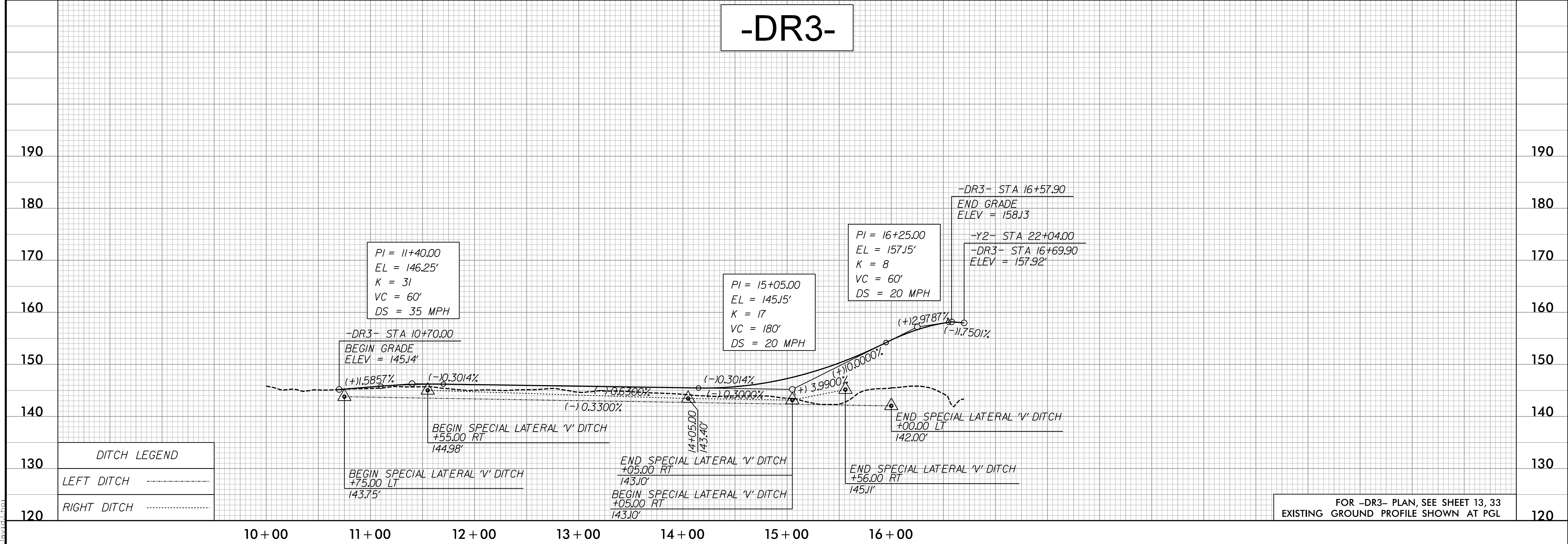
PROJECT REFERENCE NO. 1-5987A	SHEET NO. 91
ROADWAY DESIGN ENGINEER 5/18/2022	HYDRAULICS ENGINEER 5/19/2022
	
DocuSigned by: Steve Anthony Dean	DocuSigned by: Will Weatherman
<b>DOCUMENT NOT CONSIDERED FINAL UNLESS ALL SIGNATURES COMPLETED</b>	
 NV5 ENGINEERS & CONSULTANTS, INC. 7500 E. INDEPENDENCE BLVD, STE 100 CHARLOTTE, NC 28227 P: 704.537.7300 www.NV5.com NC License # F-1333	



DITCH LEGEND	
LEFT DITCH	-----
RIGHT DITCH	-----

FOR -DR2- PLAN, SEE SHEET 33  
EXISTING GROUND PROFILE SHOWN AT PGL

# -DR3-



DITCH LEGEND	
LEFT DITCH	-----
RIGHT DITCH	-----

FOR -DR3- PLAN, SEE SHEET 13, 33  
EXISTING GROUND PROFILE SHOWN AT PGL

3/30/2022  
P:\Projects\15987A\_PSH\_PFL\_91.dgn  
David