

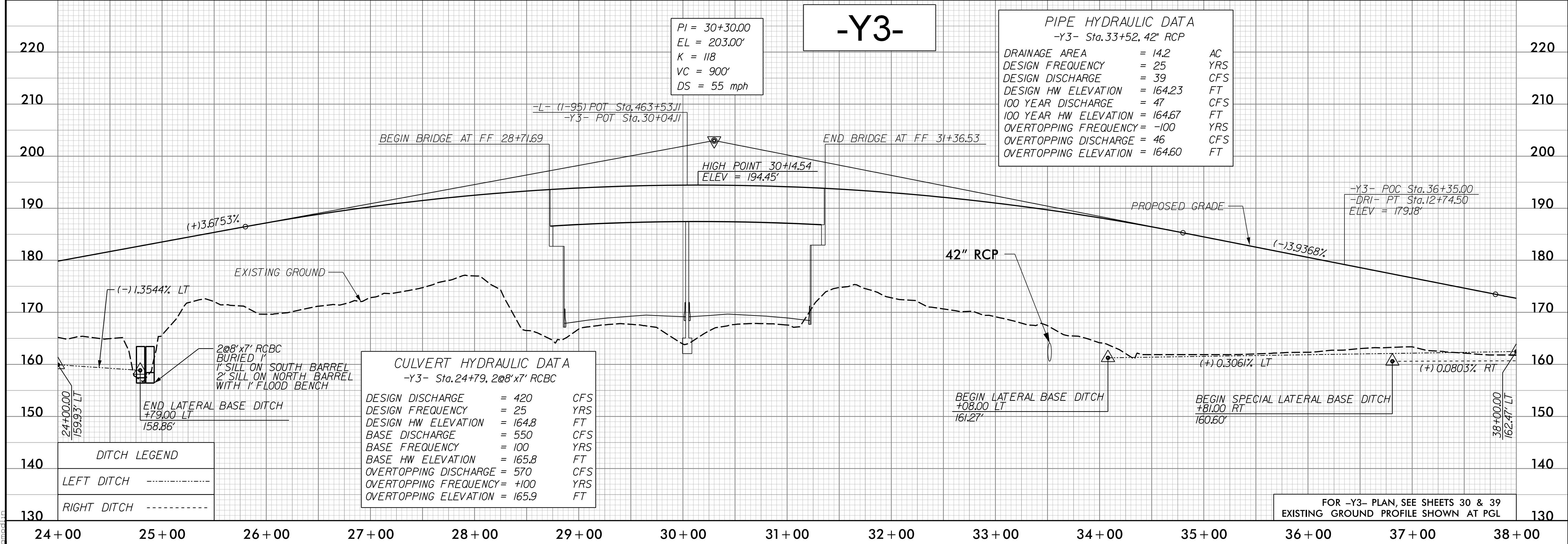
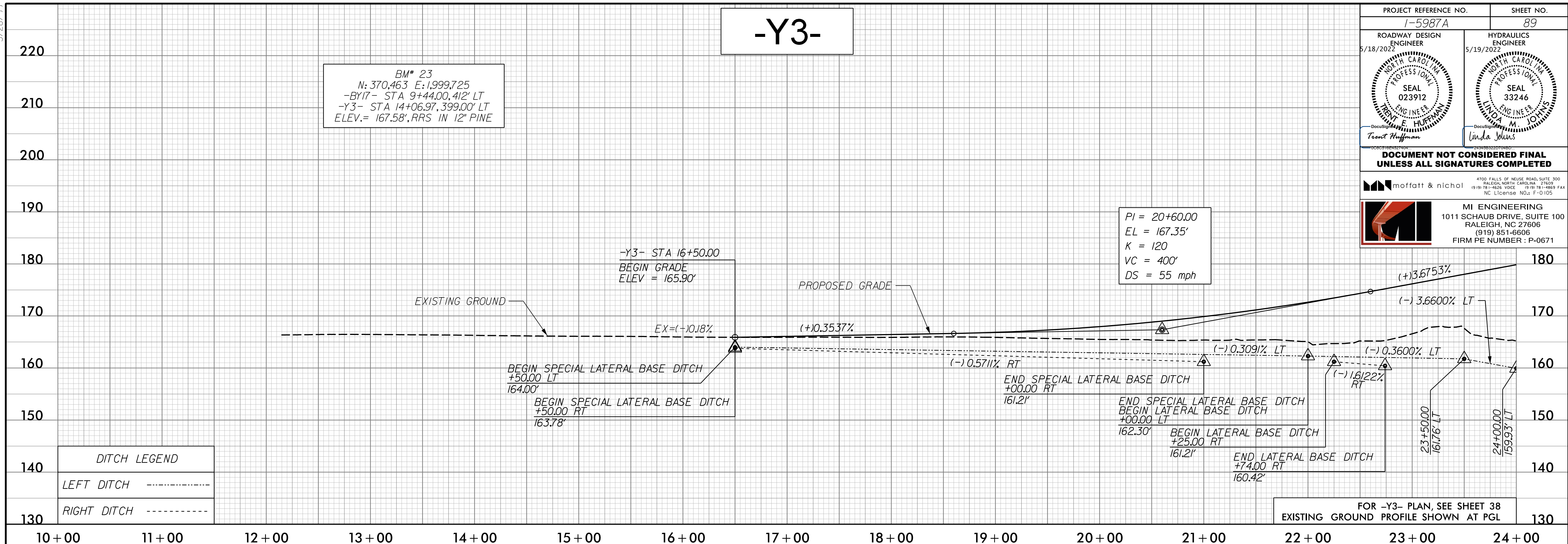
5/28/2022

PROJECT REFERENCE NO. 1-5987A	SHEET NO. 89
ROADWAY DESIGN ENGINEER 5/18/2022 	HYDRAULICS ENGINEER 5/19/2022 

**DOCUMENT NOT CONSIDERED FINAL  
UNLESS ALL SIGNATURES COMPLETED**

moffatt & nichol  
4700 FALLS OF NEUSE ROAD, SUITE 300  
RALEIGH, NORTH CAROLINA 27608  
(919) 851-6606  
NC License No.: F-0105

MI ENGINEERING  
1011 SCHAUB DRIVE, SUITE 100  
RALEIGH, NC 27608  
(919) 851-6606  
FIRM PE NUMBER: P-0671



G:\18\2022\125\0500\CAD\15987A\Roadway\Proj\15987A\_RDY\_PSH\_PFL\_089.dgn  
 5/18/2022 11:25:05 AM  
 moffatt & nichol