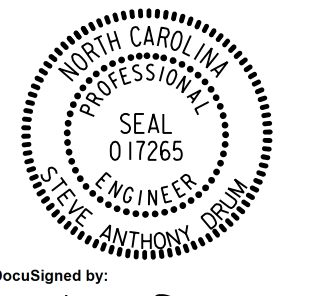



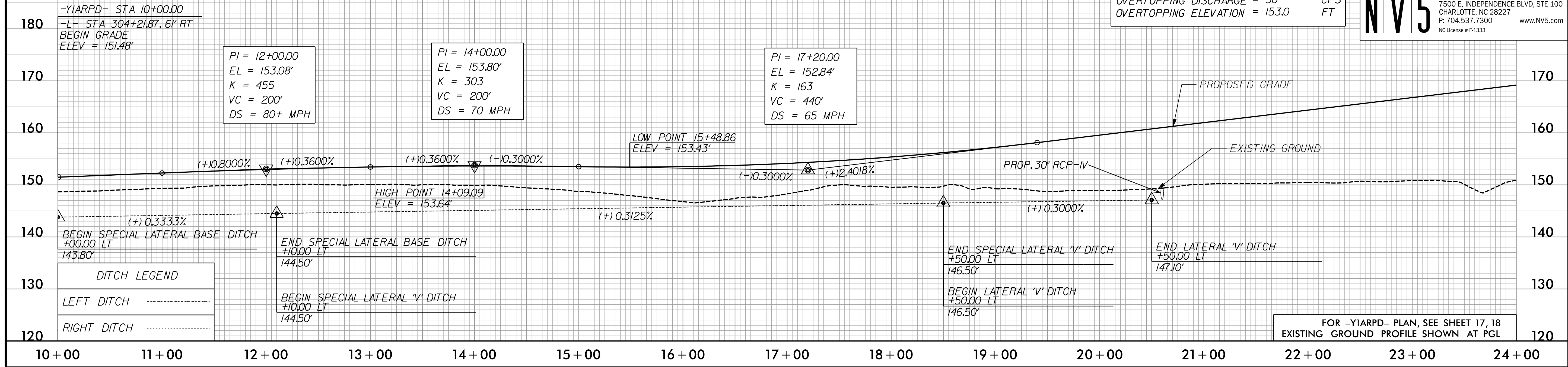
5/28/22

# -Y1ARPD-

PROJECT REFERENCE NO. 1-5987A	SHEET NO. 87
ROADWAY DESIGN ENGINEER 5/18/2022 <i>Steve Anthony Duan</i>	HYDRAULICS ENGINEER 5/19/2022 <i>Will Mathershe</i>
 	
<p><b>DOCUMENT NOT CONSIDERED FINAL UNLESS ALL SIGNATURES COMPLETED</b></p>	
<p><b>NV5</b> NV5 ENGINEERS &amp; CONSULTANTS, INC. 7500 E. INDEPENDENCE BLVD, STE 100 CHARLOTTE, NC 28227 P: 704.537.7300 www.NV5.com NC License # F-1333</p>	

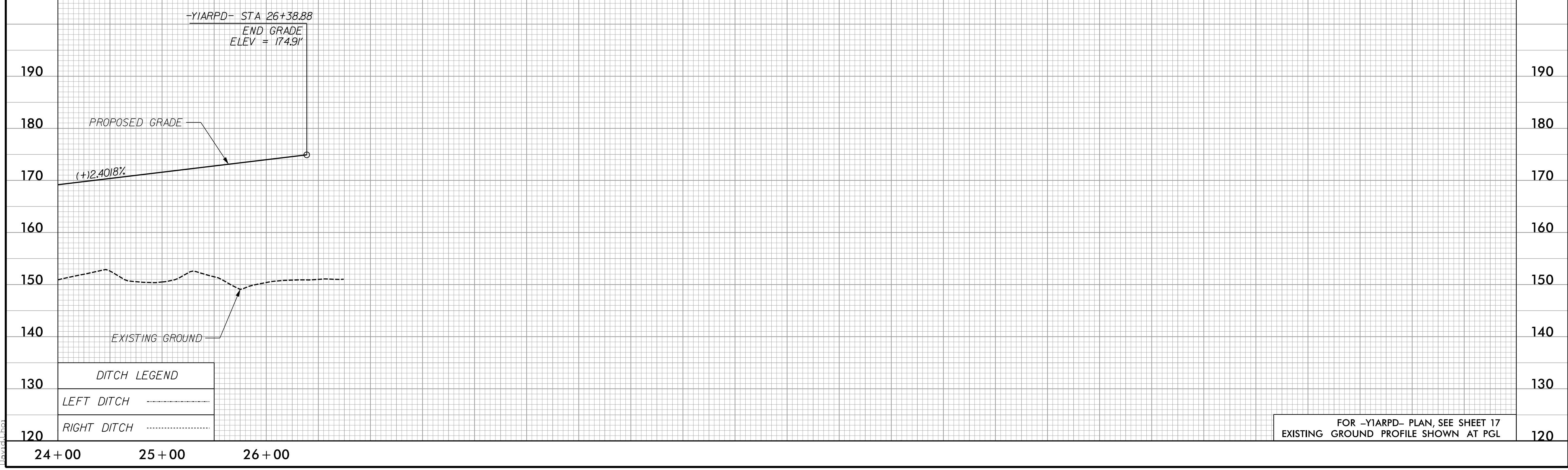
**PIPE HYDRAULIC DATA**  
-Y1ARPD- Sta. 20+60 30" RCP-IV

DRAINAGE AREA	= 4.2	AC
DESIGN FREQUENCY	= 50	YRS
DESIGN DISCHARGE	= 17	CFS
DESIGN HW ELEVATION	= 149.5	FT
100 YEAR DISCHARGE	= 18	CFS
100 YEAR HW ELEVATION	= 149.5	FT
OVERTOPPING FREQUENCY	= 200+	YRS
OVERTOPPING DISCHARGE	= 50	CFS
OVERTOPPING ELEVATION	= 153.0	FT



FOR -Y1ARPD- PLAN, SEE SHEET 17, 18  
EXISTING GROUND PROFILE SHOWN AT PGL

# -Y1ARPD-



FOR -Y1ARPD- PLAN, SEE SHEET 17  
EXISTING GROUND PROFILE SHOWN AT PGL

3/10/2022  
 P:\Projects\15987A\RDY\_PSH\_PFL\_87.dgn  
 David