

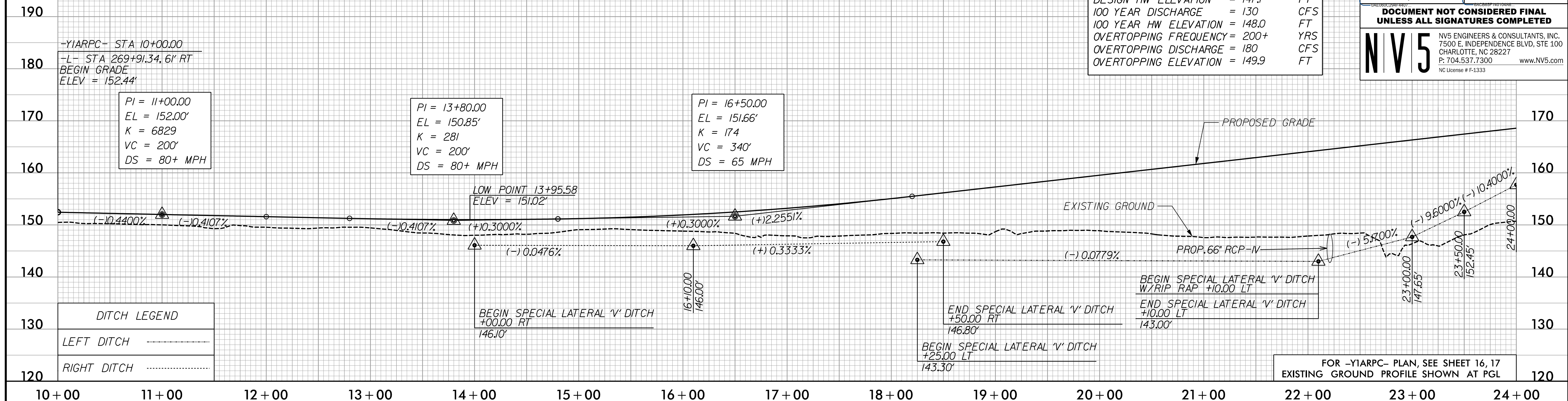
5/28/2022

# -Y1ARPC-

PROJECT REFERENCE NO. 1-5987A	SHEET NO. 86
ROADWAY DESIGN ENGINEER 5/18/2022 SEAL 017265 STEVE ANTHONY DRAN	HYDRAULICS ENGINEER 5/19/2022 SEAL 036188 WILL WEATHERSHE N.C. REGISTERED PROFESSIONAL ENGINEER
<p><b>DOCUMENT NOT CONSIDERED FINAL</b> <b>UNLESS ALL SIGNATURES COMPLETED</b></p>	
<p><b>NV5</b> NV5 ENGINEERS &amp; CONSULTANTS, INC. 7500 E. INDEPENDENCE BLVD, STE 100 CHARLOTTE, NC 28227 P: 704.537.7300 www.NV5.com NC License # F-1333</p>	

**PIPE HYDRAULIC DATA**  
-Y1ARPC- Sta. 22+21.66" RCP-IV

DRAINAGE AREA	= 0.14	Sq MI
DESIGN FREQUENCY	= 50	YRS
DESIGN DISCHARGE	= 120	CFS
DESIGN HW ELEVATION	= 147.7	FT
100 YEAR DISCHARGE	= 130	CFS
100 YEAR HW ELEVATION	= 148.0	FT
OVERTOPPING FREQUENCY	= 200+	YRS
OVERTOPPING DISCHARGE	= 180	CFS
OVERTOPPING ELEVATION	= 149.9	FT

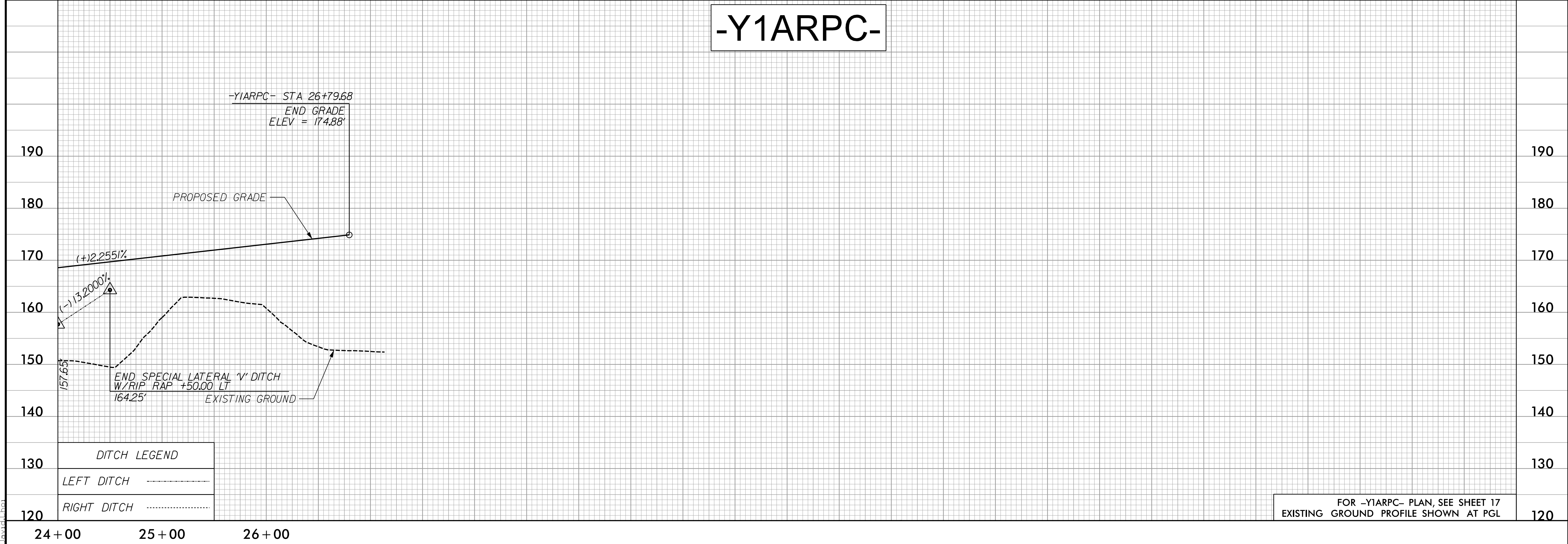


**DITCH LEGEND**

LEFT DITCH	-----
RIGHT DITCH	-----

FOR -Y1ARPC- PLAN, SEE SHEET 16, 17  
EXISTING GROUND PROFILE SHOWN AT PGL

# -Y1ARPC-



**DITCH LEGEND**

LEFT DITCH	-----
RIGHT DITCH	-----

FOR -Y1ARPC- PLAN, SEE SHEET 17  
EXISTING GROUND PROFILE SHOWN AT PGL

3/10/2022  
 P:\Projects\15987A\_PSH\_PFL\_86.dgn  
 David