


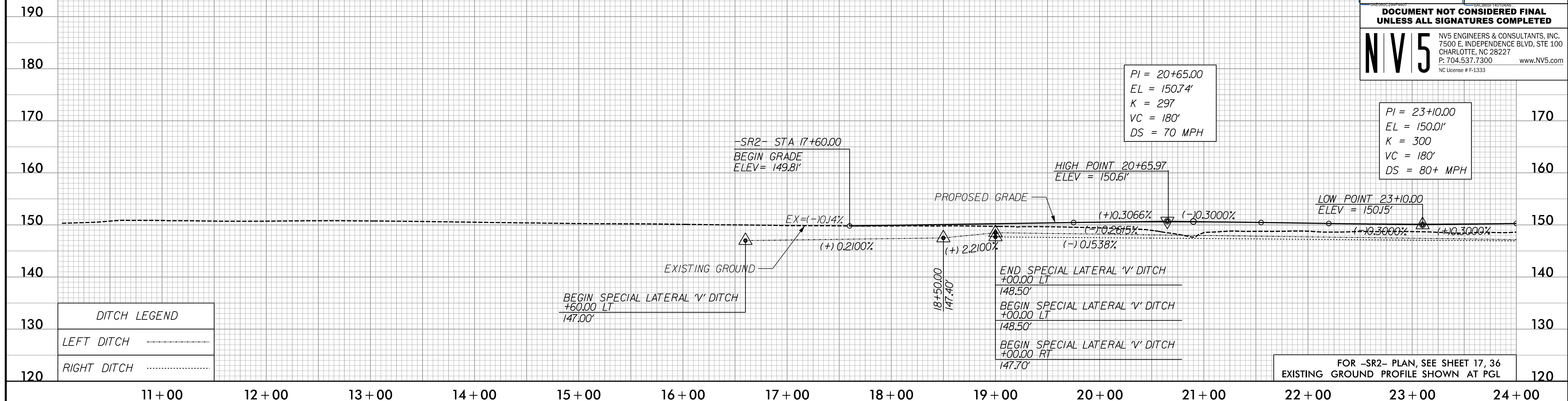


5/28/2022

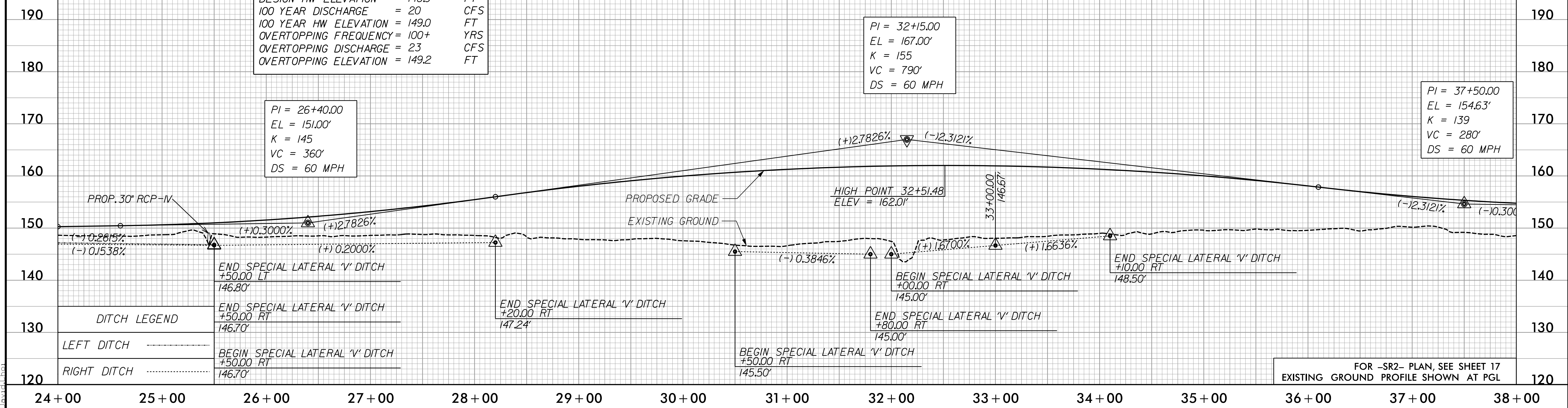
# -SR2-

PROJECT REFERENCE NO. 1-5987A	SHEET NO. 76
ROADWAY DESIGN ENGINEER 5/18/2022 	HYDRAULICS ENGINEER 5/19/2022 
DOCUMENT NOT CONSIDERED FINAL UNLESS ALL SIGNATURES COMPLETED	
 NV5 ENGINEERS & CONSULTANTS, INC. 7500 E. INDEPENDENCE BLVD, STE 100 CHARLOTTE, NC 28227 P: 704.537.7300 www.nv5.com NC License # F-1333	



# -SR2-

PIPE HYDRAULIC DATA		
-SR2- Sta. 25+45 30" RCP-IV		
DRAINAGE AREA	= 50	AC
DESIGN FREQUENCY	= 25	YRS
DESIGN DISCHARGE	= 18	CFS
DESIGN HW ELEVATION	= 148.9	FT
100 YEAR DISCHARGE	= 20	CFS
100 YEAR HW ELEVATION	= 149.0	FT
OVERTOPPING FREQUENCY	= 100+	YRS
OVERTOPPING DISCHARGE	= 23	CFS
OVERTOPPING ELEVATION	= 149.2	FT



3/30/2022  
P:\Projects\15987A\_RDP\_PSH\_PFL\_76.dgn  
David Johnson