

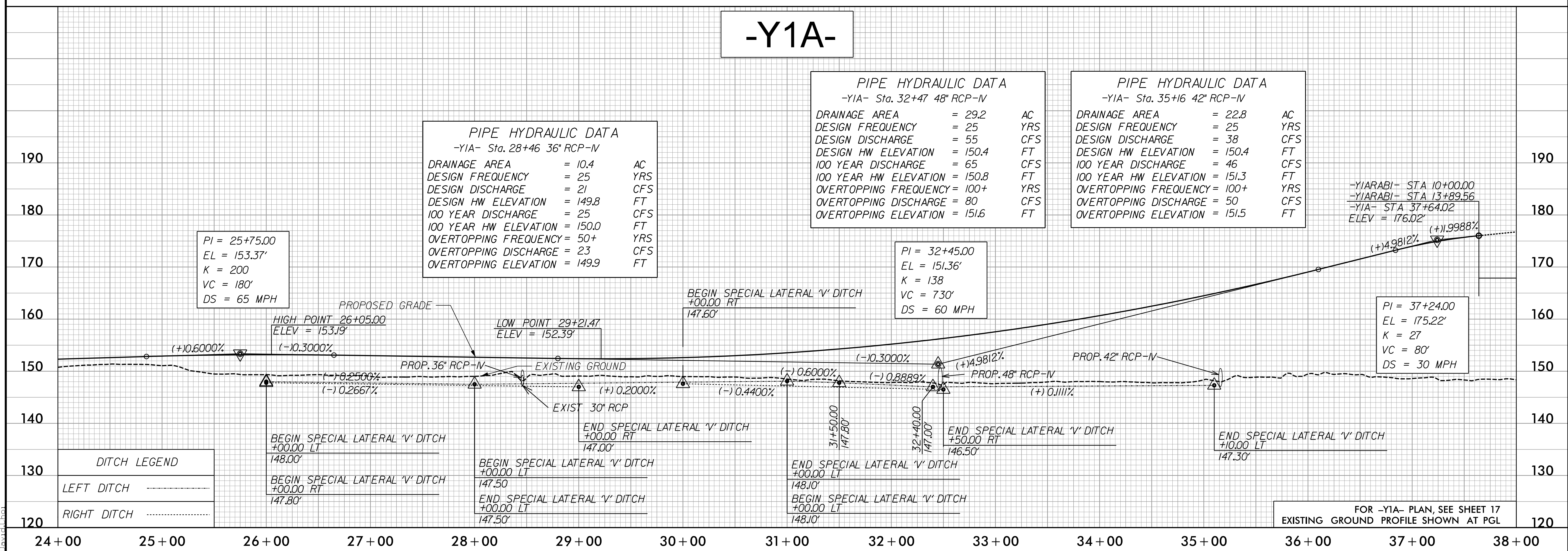
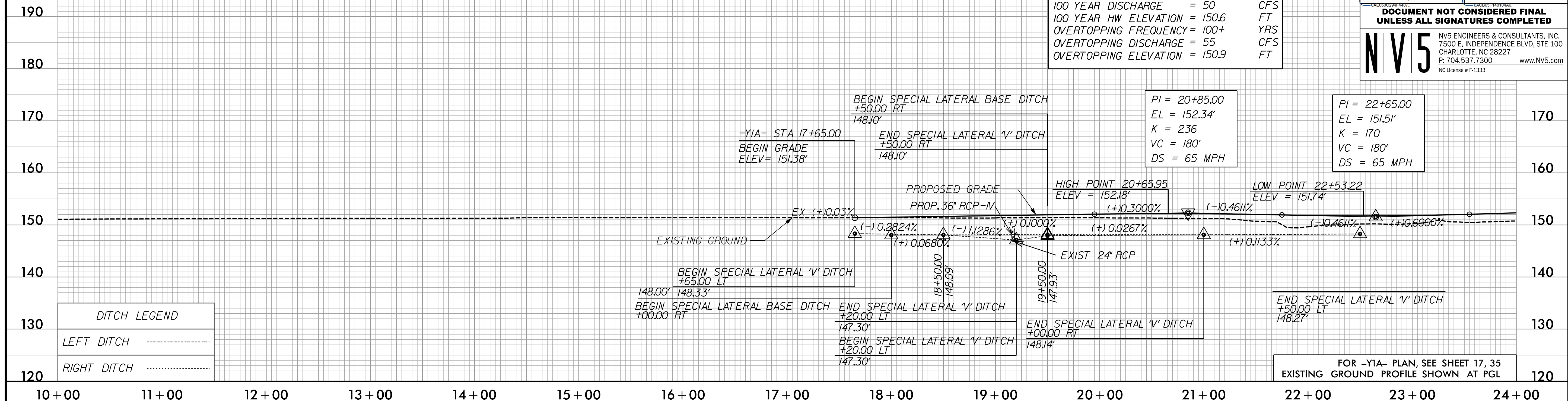
5/28/2022

-Y1A-

PROJECT REFERENCE NO. 1-5987A	SHEET NO. 74
ROADWAY DESIGN ENGINEER 5/18/2022	HYDRAULICS ENGINEER 5/19/2022
DocuSigned by: Steve Anthony Dean	DocuSigned by: Will Weatherstone
DOCUMENT NOT CONSIDERED FINAL UNLESS ALL SIGNATURES COMPLETED	
NV5 NV5 ENGINEERS & CONSULTANTS, INC. 7500 E. INDEPENDENCE BLVD, STE 100 CHARLOTTE, NC 28227 P: 704.537.7300 www.NV5.com NC License # F-1333	

PIPE HYDRAULIC DATA
-Y1A- Sta. 19+15 36" RCP-IV

DRAINAGE AREA	= 24.4	AC
DESIGN FREQUENCY	= 25	YRS
DESIGN DISCHARGE	= 42	CFS
DESIGN HW ELEVATION	= 150.2	FT
100 YEAR DISCHARGE	= 50	CFS
100 YEAR HW ELEVATION	= 150.6	FT
OVERTOPPING FREQUENCY	= 100+	YRS
OVERTOPPING DISCHARGE	= 55	CFS
OVERTOPPING ELEVATION	= 150.9	FT



PIPE HYDRAULIC DATA
-Y1A- Sta. 28+46 36" RCP-IV

DRAINAGE AREA	= 10.4	AC
DESIGN FREQUENCY	= 25	YRS
DESIGN DISCHARGE	= 21	CFS
DESIGN HW ELEVATION	= 149.8	FT
100 YEAR DISCHARGE	= 25	CFS
100 YEAR HW ELEVATION	= 150.0	FT
OVERTOPPING FREQUENCY	= 50+	YRS
OVERTOPPING DISCHARGE	= 23	CFS
OVERTOPPING ELEVATION	= 149.9	FT

PIPE HYDRAULIC DATA
-Y1A- Sta. 32+47 48" RCP-IV

DRAINAGE AREA	= 29.2	AC
DESIGN FREQUENCY	= 25	YRS
DESIGN DISCHARGE	= 55	CFS
DESIGN HW ELEVATION	= 150.4	FT
100 YEAR DISCHARGE	= 65	CFS
100 YEAR HW ELEVATION	= 150.8	FT
OVERTOPPING FREQUENCY	= 100+	YRS
OVERTOPPING DISCHARGE	= 80	CFS
OVERTOPPING ELEVATION	= 151.6	FT

PIPE HYDRAULIC DATA
-Y1A- Sta. 35+16 42" RCP-IV

DRAINAGE AREA	= 22.8	AC
DESIGN FREQUENCY	= 25	YRS
DESIGN DISCHARGE	= 38	CFS
DESIGN HW ELEVATION	= 150.4	FT
100 YEAR DISCHARGE	= 46	CFS
100 YEAR HW ELEVATION	= 151.3	FT
OVERTOPPING FREQUENCY	= 100+	YRS
OVERTOPPING DISCHARGE	= 50	CFS
OVERTOPPING ELEVATION	= 151.5	FT

5/19/2022
P:\Projects\15987A_RDY_PSH_PFL_74.dgn
David