

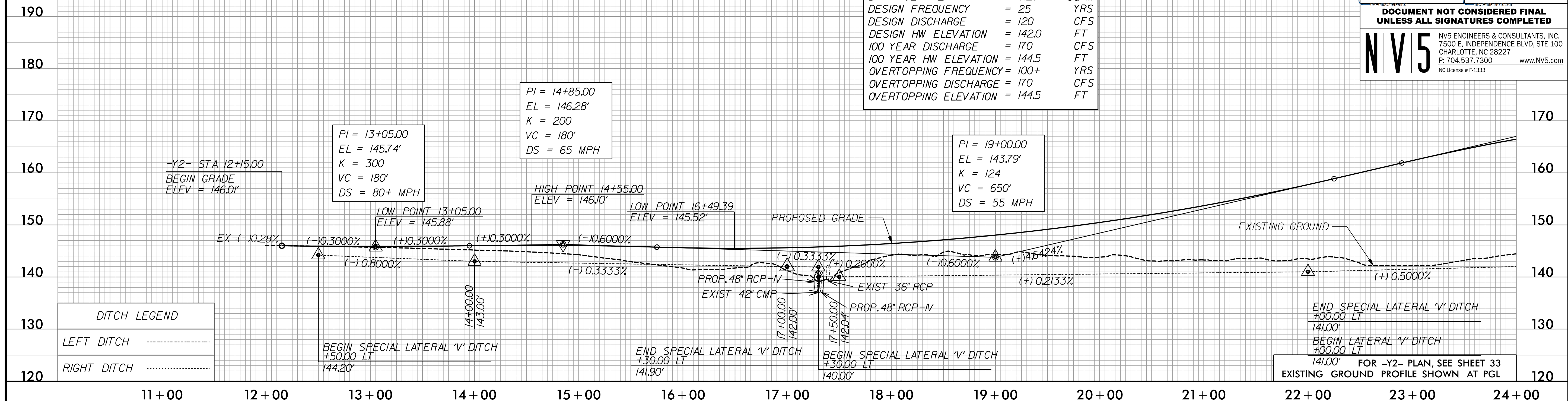
5/28/2022

-Y2-

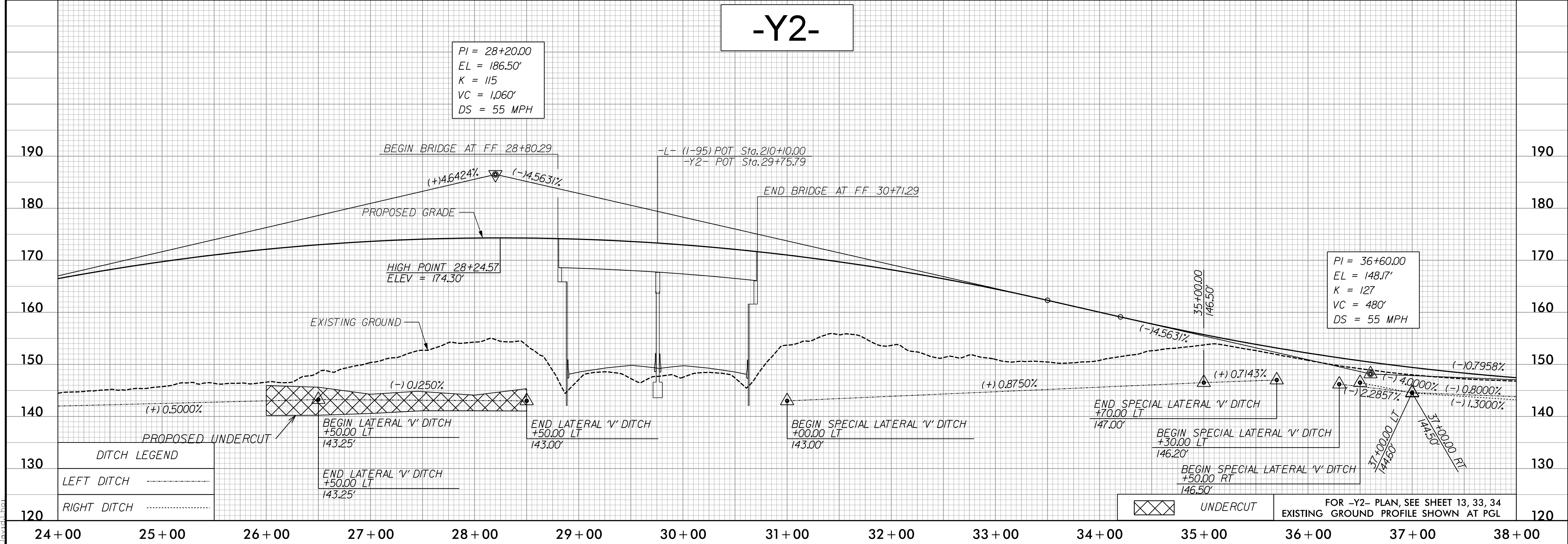
PROJECT REFERENCE NO. 1-5987A	SHEET NO. 72
ROADWAY DESIGN ENGINEER 5/18/2022	HYDRAULICS ENGINEER 5/19/2022
DocuSigned by: Steve Anthony Duan	
DocuSigned by: Will Mathershe	
DOCUMENT NOT CONSIDERED FINAL UNLESS ALL SIGNATURES COMPLETED	
NV5 NV5 ENGINEERS & CONSULTANTS, INC. 7500 E. INDEPENDENCE BLVD, STE 100 CHARLOTTE, NC 28227 P: 704.537.7300 www.NV5.com NC License # F-1333	

PIPE HYDRAULIC DATA
-Y2- Sta. 17+35.2 @ 48" RCP-N

DRAINAGE AREA	= 0.28	SQ MI
DESIGN FREQUENCY	= 25	YRS
DESIGN DISCHARGE	= 120	CFS
DESIGN HW ELEVATION	= 142.0	FT
100 YEAR DISCHARGE	= 170	CFS
100 YEAR HW ELEVATION	= 144.5	FT
OVERTOPPING FREQUENCY	= 100+	YRS
OVERTOPPING DISCHARGE	= 170	CFS
OVERTOPPING ELEVATION	= 144.5	FT



-Y2-



5/19/2022
P:\Projects\15987A\RDY_PSH_PFL_72.dgn
David Johnson