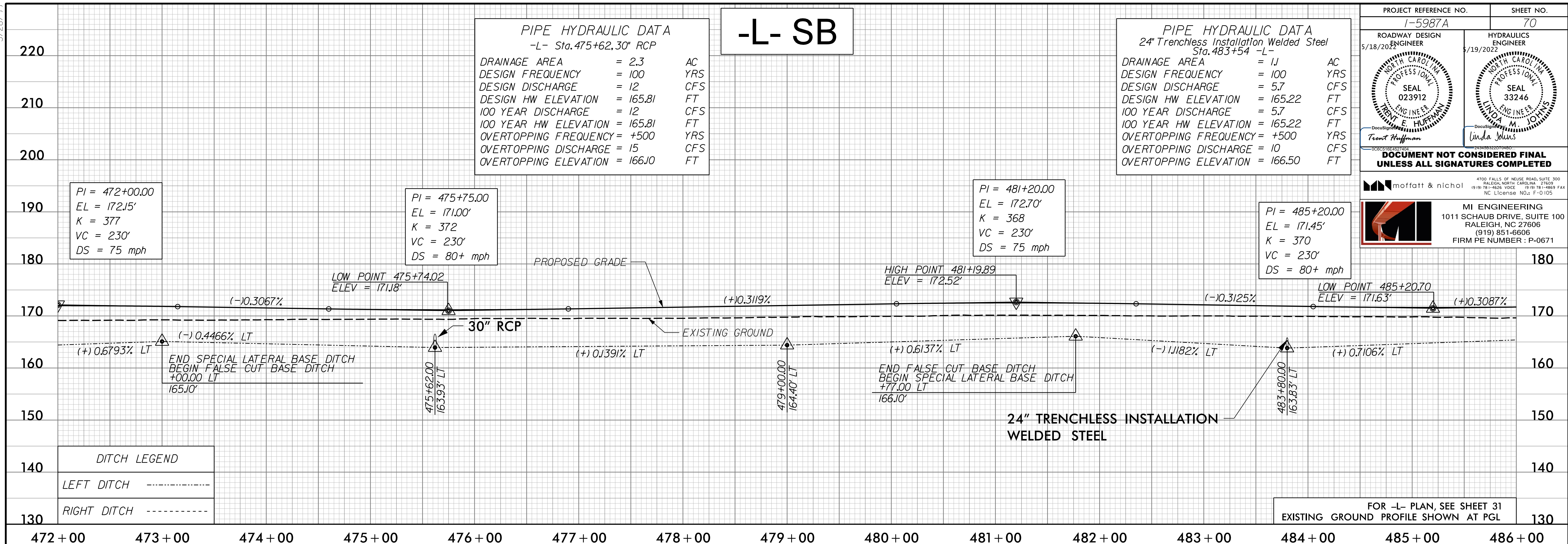


5/28/2022



PROJECT REFERENCE NO. 1-5987A SHEET NO. 70

ROADWAY DESIGN ENGINEER 5/18/2022

HYDRAULICS ENGINEER 5/19/2022

SEAL 023912 SEAL 33246

Trout Huffman Document E. HUFFMAN

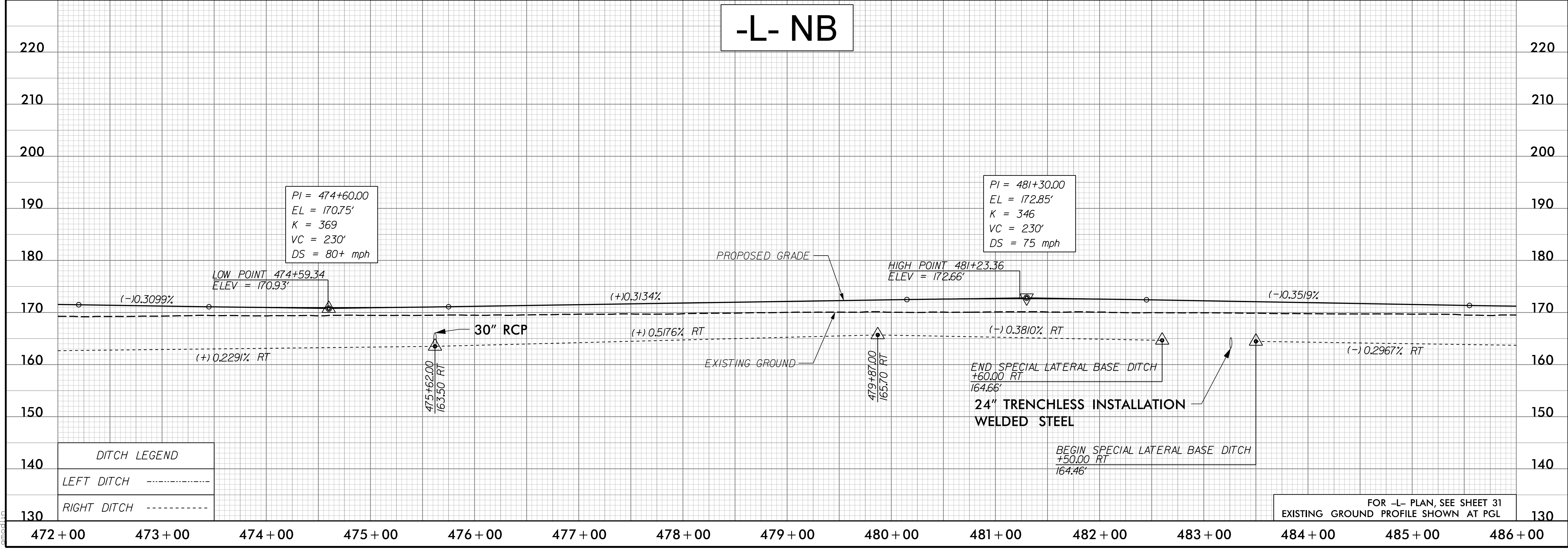
MI ENGINEERING 1011 SCHAUB DRIVE, SUITE 100 RALEIGH, NC 27608 (919) 851-6606 FIRM PE NUMBER: P-0671

4700 FALLS OF NEUSE ROAD, SUITE 300 RALEIGH, NORTH CAROLINA 27609 FAX (919) 851-6606 NC License No.: F-0 105

moftatt & nichol

**DOCUMENT NOT CONSIDERED FINAL UNLESS ALL SIGNATURES COMPLETED**

D:\18\2022\CAD\125\0500\CAD\15987A\Roadway\Proj\15987A\_RDY\_PSH\_PFL\_070.dgn



FOR -L- PLAN, SEE SHEET 31 EXISTING GROUND PROFILE SHOWN AT PGL