

5/28/2012

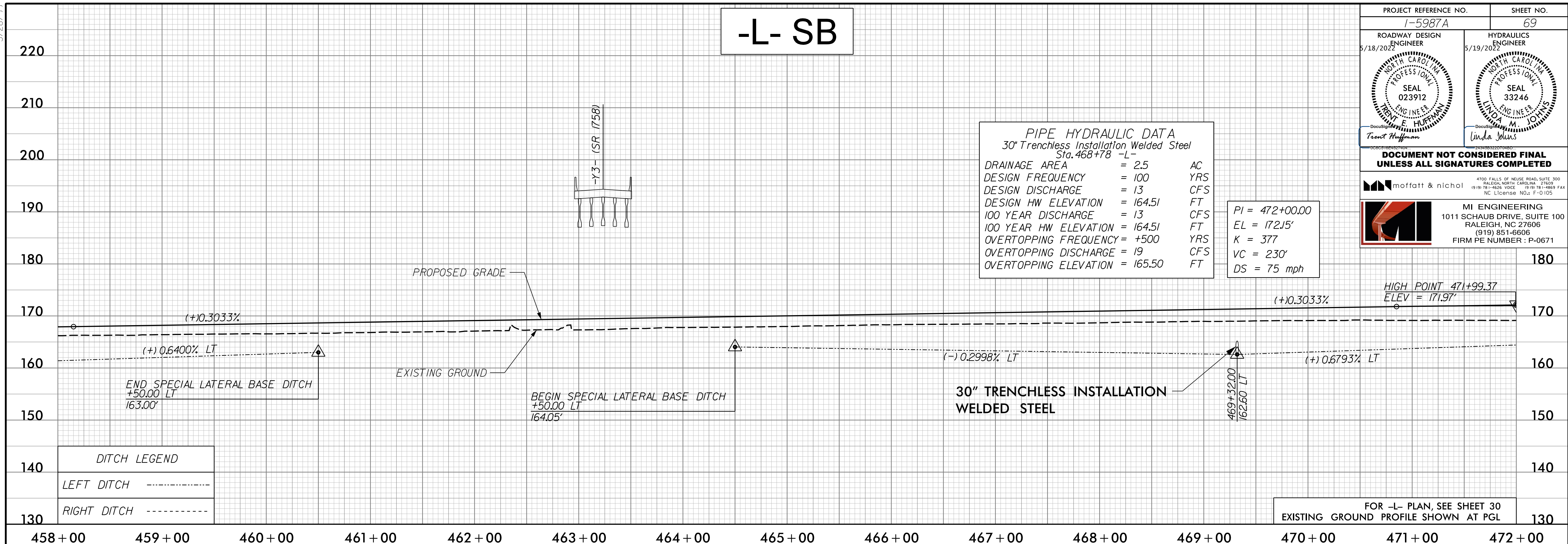
# -L- SB

PROJECT REFERENCE NO. 1-5987A	SHEET NO. 69
ROADWAY DESIGN ENGINEER 5/18/2012 Trent Hoffman SEAL 023912 ENGINEER NORTH CAROLINA PROFESSIONAL ENGINEERS ASSOCIATION	HYDRAULICS ENGINEER 5/19/2012 Linda Johns SEAL 33246 ENGINEER NORTH CAROLINA PROFESSIONAL ENGINEERS ASSOCIATION

**PIPE HYDRAULIC DATA**  
30" Trenchless Installation Welded Steel  
Sta. 468+78 -L-

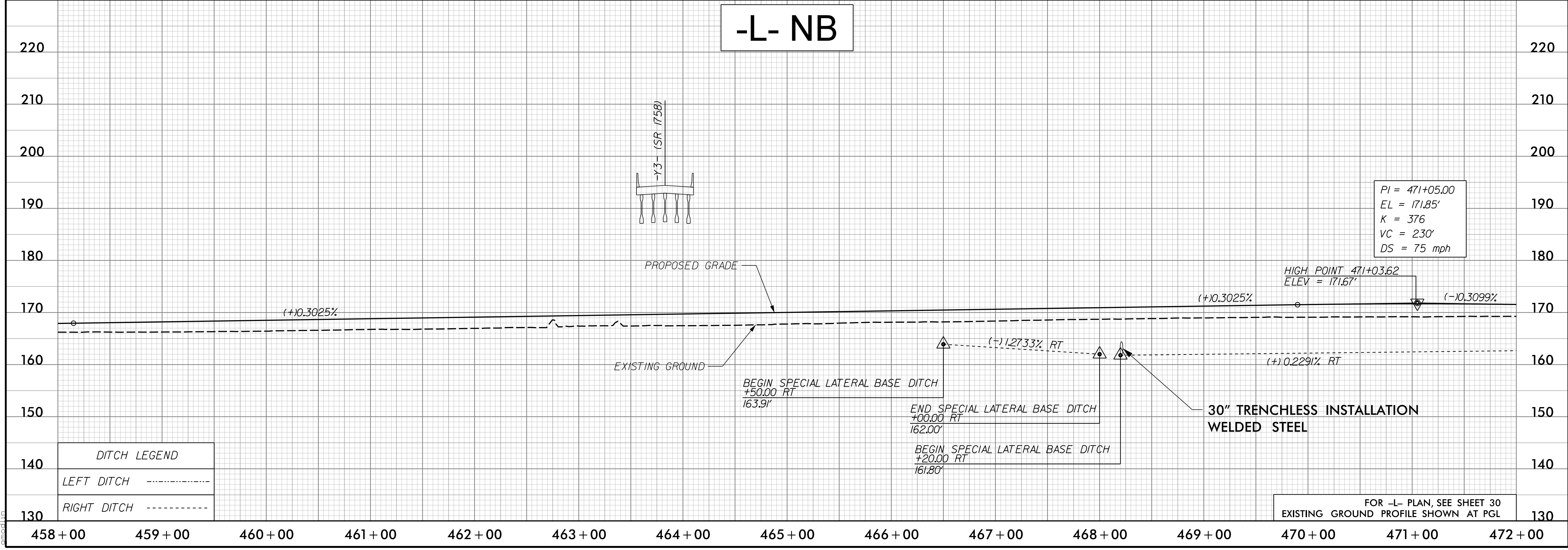
DRAINAGE AREA	= 2.5	AC
DESIGN FREQUENCY	= 100	YRS
DESIGN DISCHARGE	= 13	CFS
DESIGN HW ELEVATION	= 164.51	FT
100 YEAR DISCHARGE	= 13	CFS
100 YEAR HW ELEVATION	= 164.51	FT
OVERTOPPING FREQUENCY	= +500	YRS
OVERTOPPING DISCHARGE	= 19	CFS
OVERTOPPING ELEVATION	= 165.50	FT

PI = 472+00.00  
EL = 172.15'  
K = 377  
VC = 230'  
DS = 75 mph



# -L- NB

PI = 471+05.00  
EL = 171.85'  
K = 376  
VC = 230'  
DS = 75 mph



D:\125\0500\CAD\15987A\Roadway\Proj\15987A\_RDY\_PSH\_PFL\_069.dgn