

5/28/2022

# -L- SB

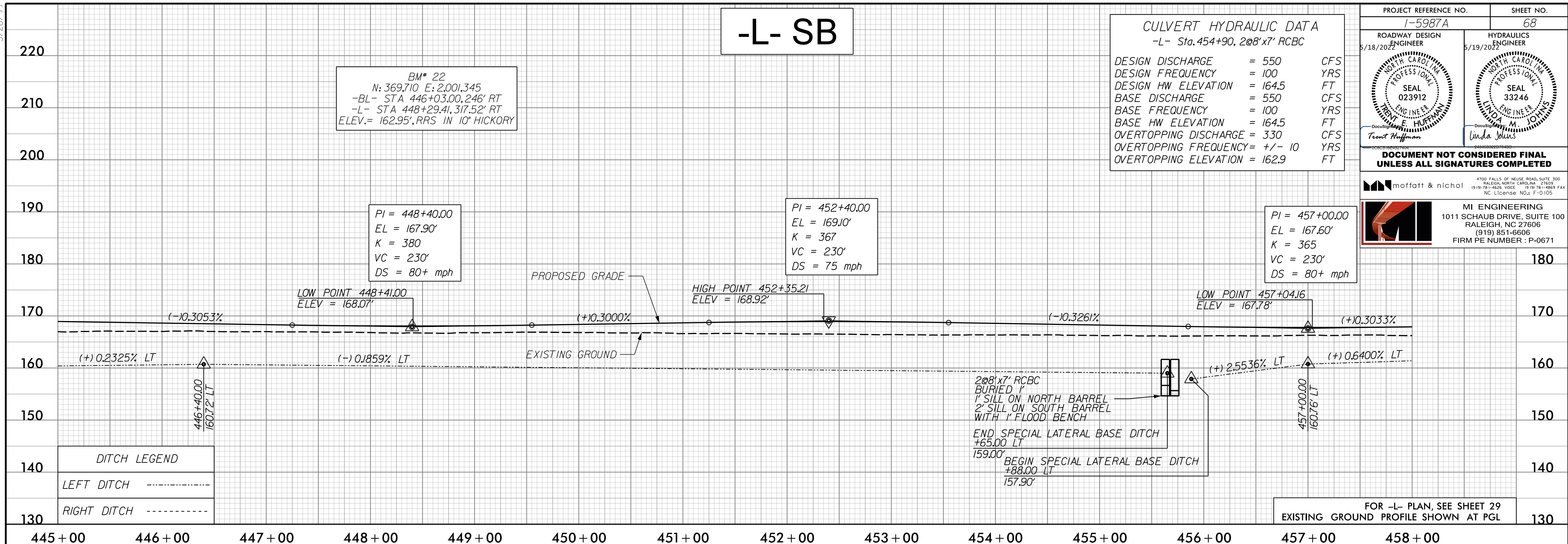
**CULVERT HYDRAULIC DATA**  
-L- Sta. 454+90, 208'x7' RCBC

DESIGN DISCHARGE	= 550	CFS
DESIGN FREQUENCY	= 100	YRS
DESIGN HW ELEVATION	= 164.5	FT
BASE DISCHARGE	= 550	CFS
BASE FREQUENCY	= 100	YRS
BASE HW ELEVATION	= 164.5	FT
OVERTOPPING DISCHARGE	= 330	CFS
OVERTOPPING FREQUENCY	= +/- 10	YRS
OVERTOPPING ELEVATION	= 162.9	FT

PROJECT REFERENCE NO.	1-5987A	SHEET NO.	68
ROADWAY DESIGN ENGINEER		HYDRAULICS ENGINEER	

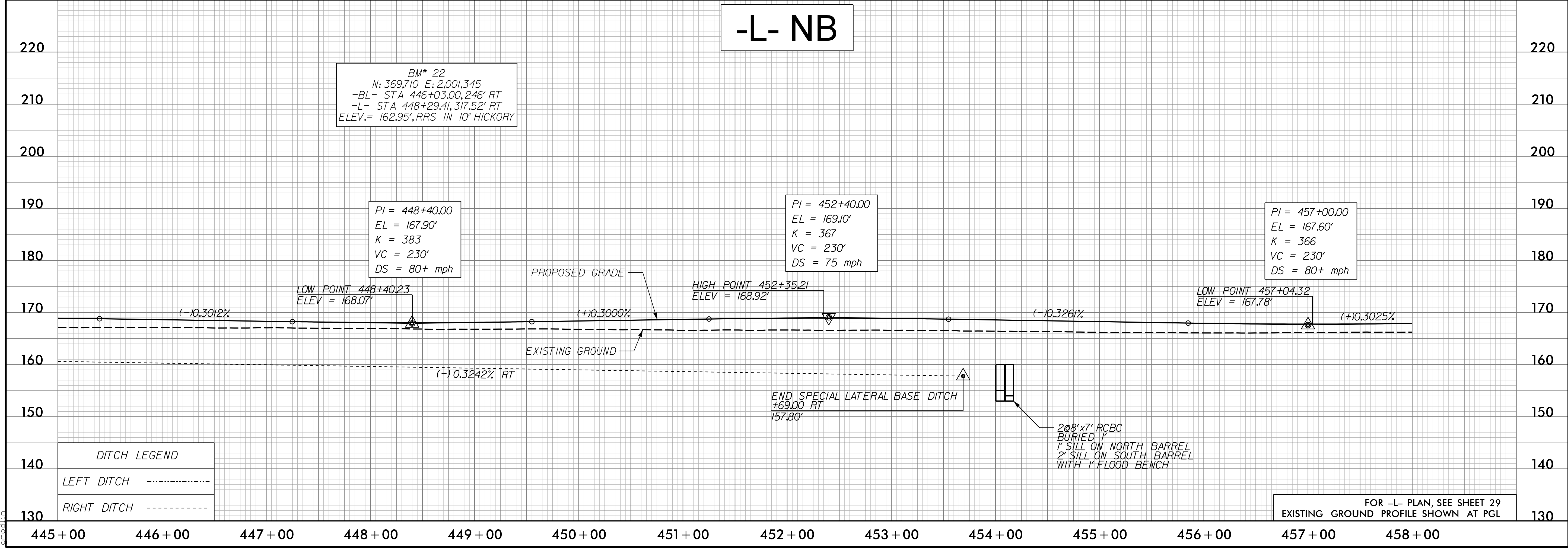
**DOCUMENT NOT CONSIDERED FINAL UNLESS ALL SIGNATURES COMPLETED**

**MI ENGINEERING**  
1011 SCHAUB DRIVE, SUITE 100  
RALEIGH, NC 27608  
(919) 851-6606  
FIRM PE NUMBER: P-0671



# -L- NB

BM\* 22  
N: 369,710 E: 2,001,345  
-BL- STA 446+03.00, 246' RT  
-L- STA 448+29.41, 317.52' RT  
ELEV.= 162.95', RRS IN 10' HICKORY



0:\Projects\12510500\CAD\15987A\Roadway\Proj\15987A\_RDY\_PSH\_PFL\_068.dgn