

5/28/2022

-L- SB

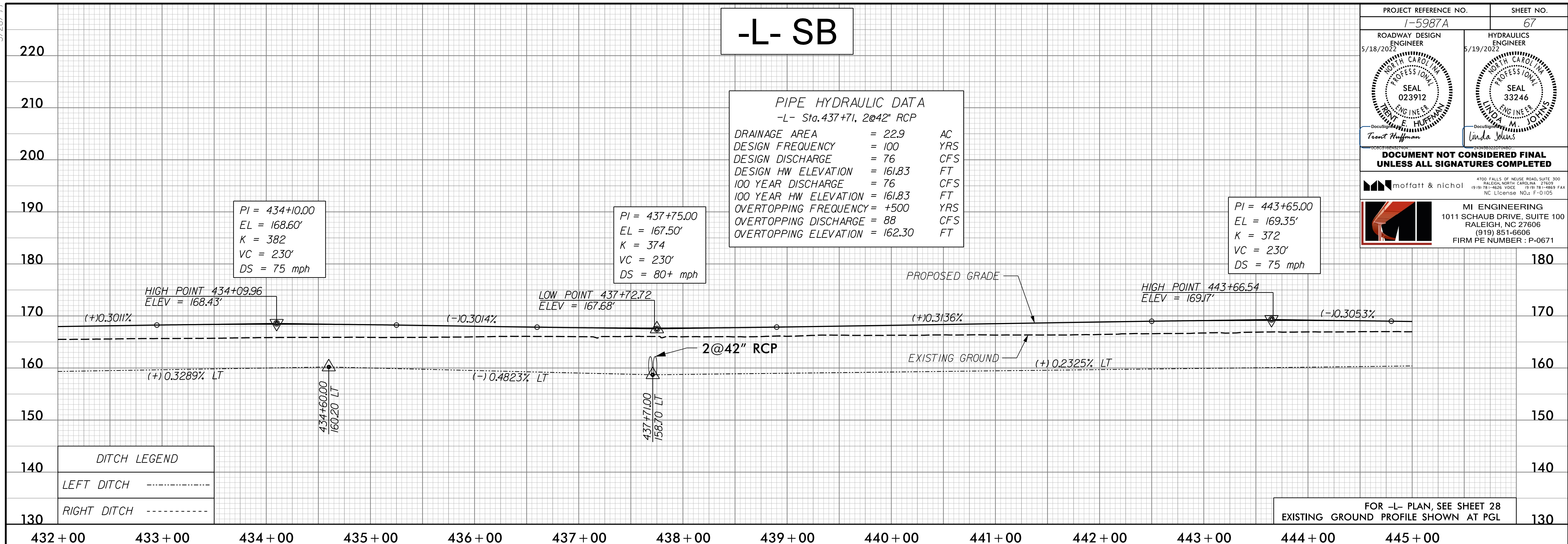
PIPE HYDRAULIC DATA
 -L- Sta. 437+71, 2@42" RCP

DRAINAGE AREA	= 22.9	AC
DESIGN FREQUENCY	= 100	YRS
DESIGN DISCHARGE	= 76	CFS
DESIGN HW ELEVATION	= 161.83	FT
100 YEAR DISCHARGE	= 76	CFS
100 YEAR HW ELEVATION	= 161.83	FT
OVERTOPPING FREQUENCY	= +500	YRS
OVERTOPPING DISCHARGE	= 88	CFS
OVERTOPPING ELEVATION	= 162.30	FT

PROJECT REFERENCE NO. I-5987A	SHEET NO. 67
ROADWAY DESIGN ENGINEER 5/18/2022 Trent Hoffman	HYDRAULICS ENGINEER 5/19/2022 Linda Johns
SEAL 023912 NORTH CAROLINA PROFESSIONAL ENGINEER	SEAL 33246 NORTH CAROLINA PROFESSIONAL ENGINEER

DOCUMENT NOT CONSIDERED FINAL UNLESS ALL SIGNATURES COMPLETED

moftatt & nichol	MI ENGINEERING 1011 SCHAUB DRIVE, SUITE 100 RALEIGH, NC 27608 (919) 851-6606 FIRM PE NUMBER: P-0671
------------------	---

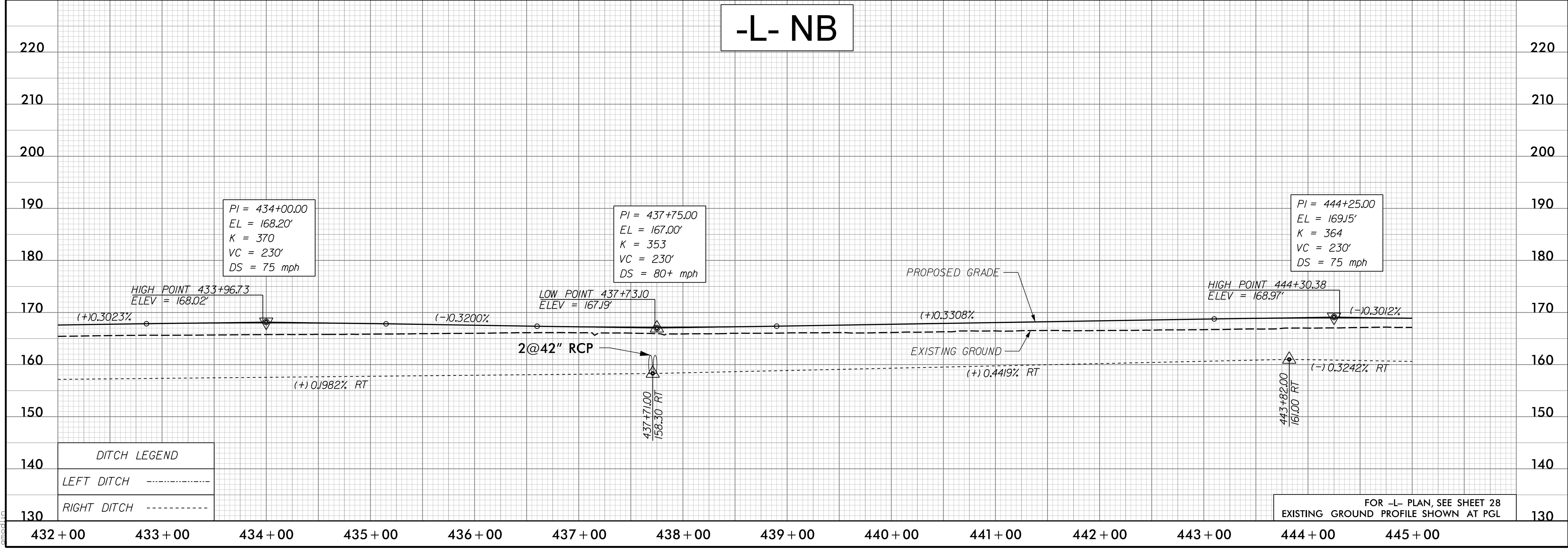


-L- NB

PI = 434+00.00
EL = 168.20'
K = 370
VC = 230'
DS = 75 mph

PI = 437+75.00
EL = 167.00'
K = 353
VC = 230'
DS = 80+ mph

PI = 444+25.00
EL = 169.15'
K = 364
VC = 230'
DS = 75 mph



D:\Projects\125\0500\CAD\I5987A\Roadway\Proj\I5987A_RDY_PSH_PFL_067.dgn