

5/28/2022

# -L- SB

PROJECT REFERENCE NO. I-5987A	SHEET NO. 64
ROADWAY DESIGN ENGINEER 5/18/2022 Trent Hoffman	HYDRAULICS ENGINEER 5/19/2022 Linda Johns
SEAL 023912 T. HOFFMAN ENGINEER	SEAL 33246 L. JOHNS ENGINEER

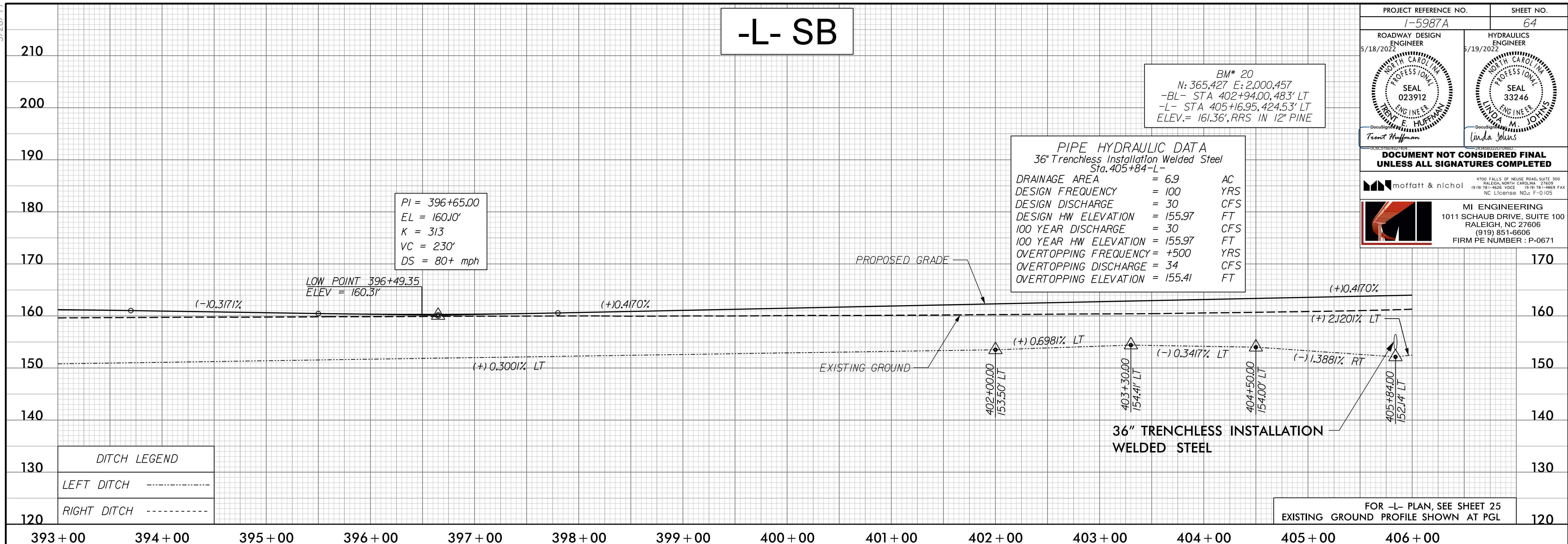
BM# 20  
N: 365,427 E: 2,000,457  
-BL- STA 402+94.00, 483' LT  
-L- STA 405+16.95, 424.53' LT  
ELEV.= 161.36', RRS IN 12" PINE

**PIPE HYDRAULIC DATA**  
36" Trenchless Installation Welded Steel  
Sta. 405+84'-L-

DRAINAGE AREA	= 6.9	AC
DESIGN FREQUENCY	= 100	YRS
DESIGN DISCHARGE	= 30	CFS
DESIGN HW ELEVATION	= 155.97	FT
100 YEAR DISCHARGE	= 30	CFS
100 YEAR HW ELEVATION	= 155.97	FT
OVERTOPPING FREQUENCY	= +500	YRS
OVERTOPPING DISCHARGE	= 34	CFS
OVERTOPPING ELEVATION	= 155.41	FT

PI = 396+65.00  
EL = 160.10'  
K = 313  
VC = 230'  
DS = 80+ mph

LOW POINT 396+49.35  
ELEV = 160.31'



**DITCH LEGEND**

LEFT DITCH	-----
RIGHT DITCH	-----

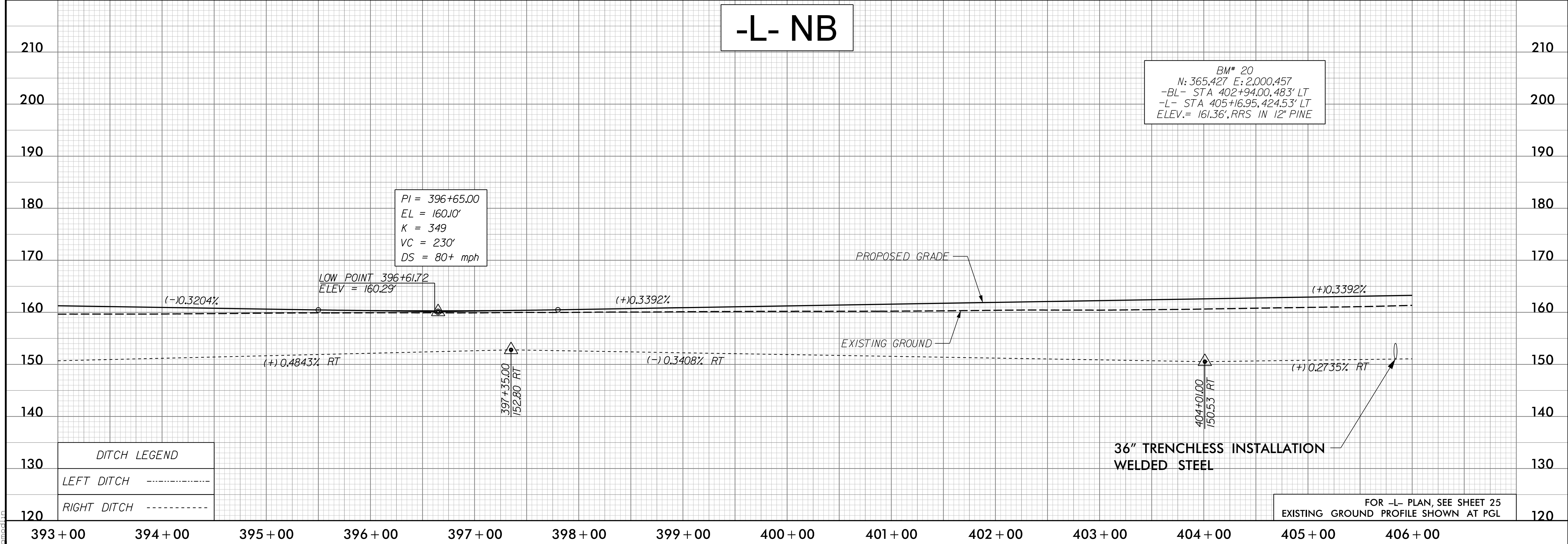
FOR -L- PLAN, SEE SHEET 25  
EXISTING GROUND PROFILE SHOWN AT PGL

# -L- NB

BM# 20  
N: 365,427 E: 2,000,457  
-BL- STA 402+94.00, 483' LT  
-L- STA 405+16.95, 424.53' LT  
ELEV.= 161.36', RRS IN 12" PINE

PI = 396+65.00  
EL = 160.10'  
K = 349  
VC = 230'  
DS = 80+ mph

LOW POINT 396+61.72  
ELEV = 160.29'



**DITCH LEGEND**

LEFT DITCH	-----
RIGHT DITCH	-----

FOR -L- PLAN, SEE SHEET 25  
EXISTING GROUND PROFILE SHOWN AT PGL

D:\18\2022\1125\0500\CAD\15987A\Roadway\Proj\15987A\_RDY\_PSH\_PFL\_064.dgn