

5/28/24

-L- SB

PROJECT REFERENCE NO. I-5987A	SHEET NO. 63
ROADWAY DESIGN ENGINEER 5/18/2022	HYDRAULICS ENGINEER 5/19/2022

**DOCUMENT NOT CONSIDERED FINAL
UNLESS ALL SIGNATURES COMPLETED**

MI ENGINEERING
1011 SCHAUB DRIVE, SUITE 100
RALEIGH, NC 27608
(919) 851-6606
FIRM PE NUMBER: P-0671

BM* 19
N: 363,434 E: 2,001,151
-BL- STA 383+07.00, 224' RT
-L- STA 385+29.77, 286.20' RT
ELEV.= 153.20', RRS IN 24" PINE

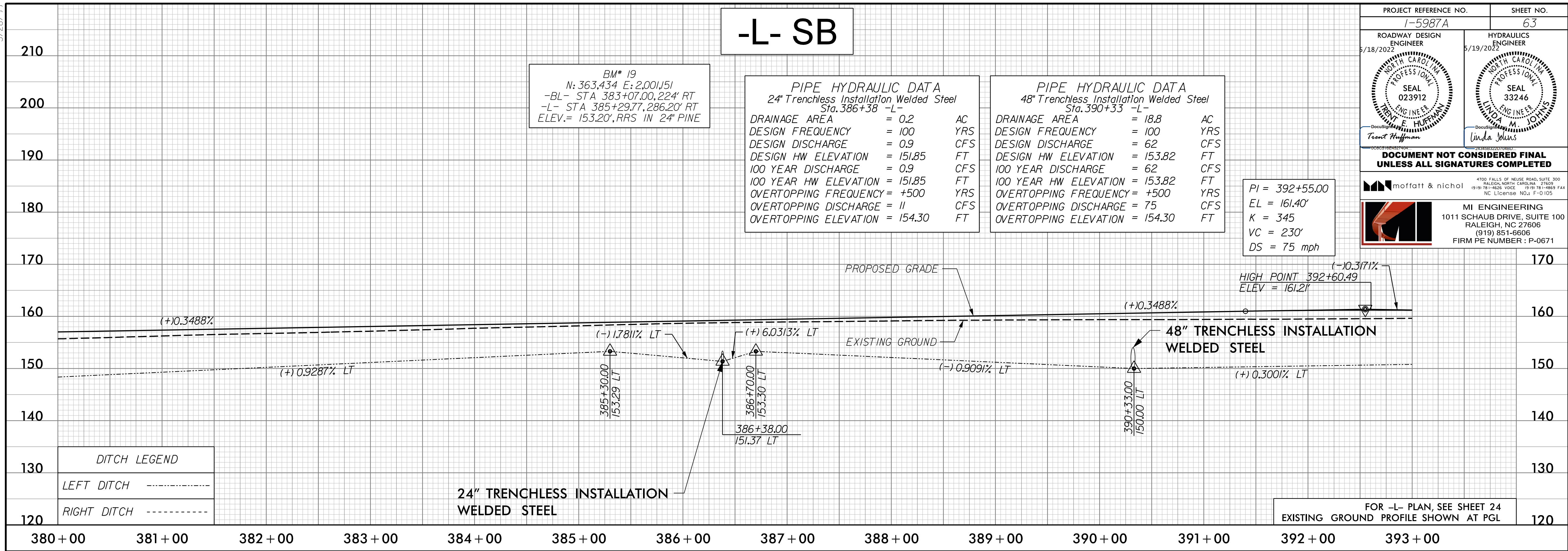
PIPE HYDRAULIC DATA
24" Trenchless Installation Welded Steel
Sta. 386+38 -L-

DRAINAGE AREA	= 0.2	AC
DESIGN FREQUENCY	= 100	YRS
DESIGN DISCHARGE	= 0.9	CFS
DESIGN HW ELEVATION	= 151.85	FT
100 YEAR DISCHARGE	= 0.9	CFS
100 YEAR HW ELEVATION	= 151.85	FT
OVERTOPPING FREQUENCY	= +500	YRS
OVERTOPPING DISCHARGE	= 11	CFS
OVERTOPPING ELEVATION	= 154.30	FT

PIPE HYDRAULIC DATA
48" Trenchless Installation Welded Steel
Sta. 390+33 -L-

DRAINAGE AREA	= 18.8	AC
DESIGN FREQUENCY	= 100	YRS
DESIGN DISCHARGE	= 62	CFS
DESIGN HW ELEVATION	= 153.82	FT
100 YEAR DISCHARGE	= 62	CFS
100 YEAR HW ELEVATION	= 153.82	FT
OVERTOPPING FREQUENCY	= +500	YRS
OVERTOPPING DISCHARGE	= 75	CFS
OVERTOPPING ELEVATION	= 154.30	FT

PI = 392+55.00
EL = 161.40'
K = 345
VC = 230'
DS = 75 mph

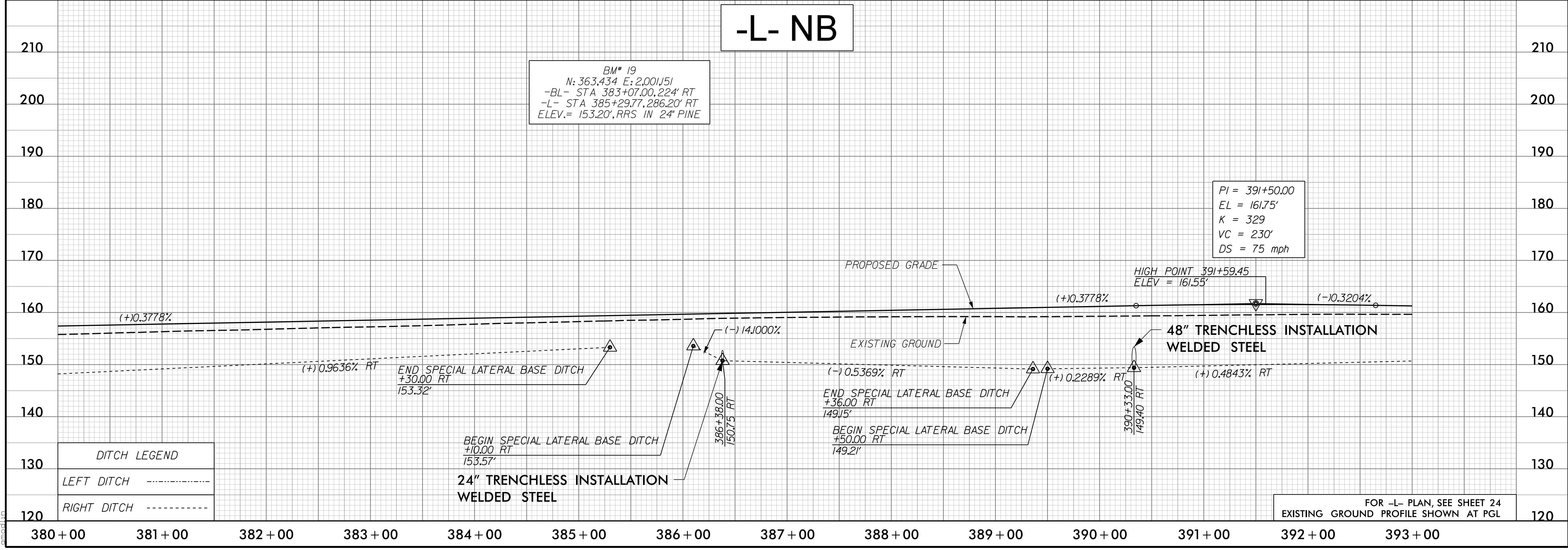


FOR -L- PLAN, SEE SHEET 24
EXISTING GROUND PROFILE SHOWN AT PGL

-L- NB

BM* 19
N: 363,434 E: 2,001,151
-BL- STA 383+07.00, 224' RT
-L- STA 385+29.77, 286.20' RT
ELEV.= 153.20', RRS IN 24" PINE

PI = 391+50.00
EL = 161.75'
K = 329
VC = 230'
DS = 75 mph



FOR -L- PLAN, SEE SHEET 24
EXISTING GROUND PROFILE SHOWN AT PGL

I:\Projects\1250500\CAD\15987A\Roadway\Proj\15987A_RDY_PSH_PFL_063.dgn