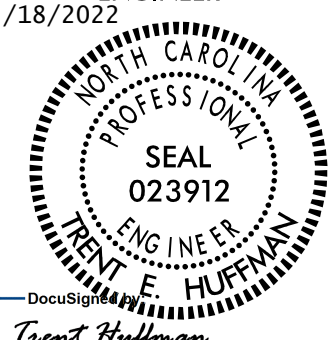
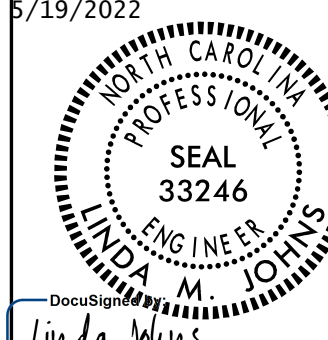




5/28/2022

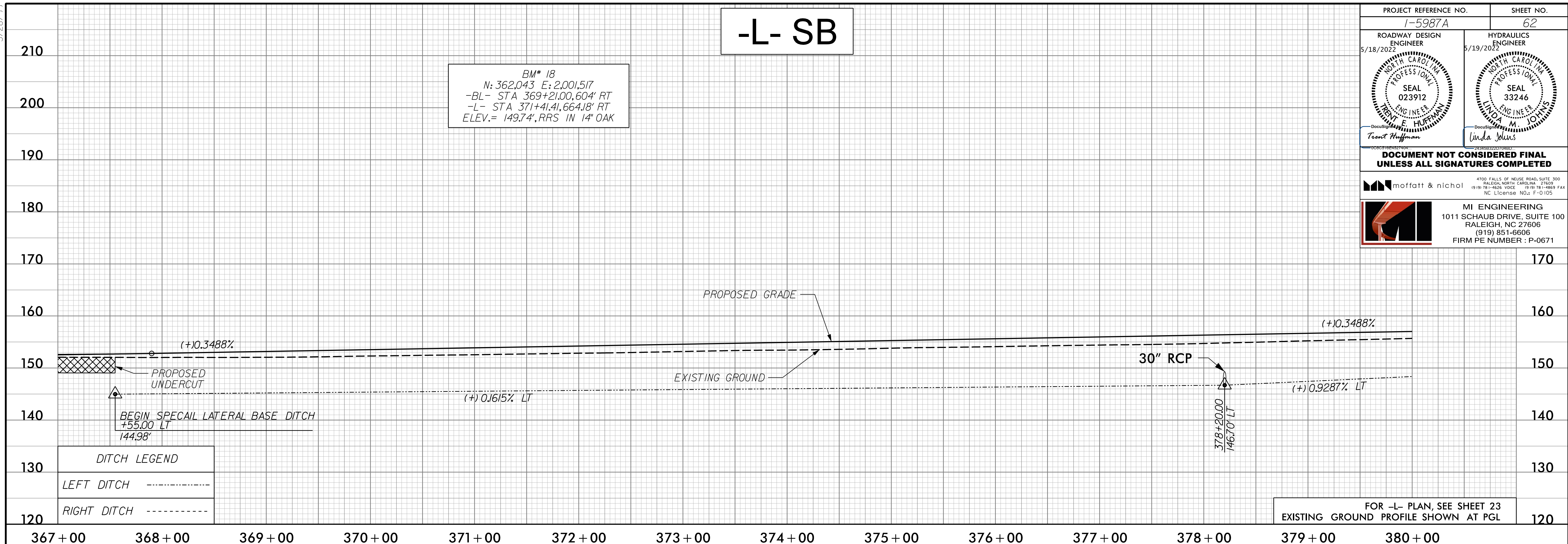
# -L- SB

BM\* 18  
 N: 362.043 E: 2.001.517  
 -BL- STA 369+21.00, 604' RT  
 -L- STA 371+41.41, 664.18' RT  
 ELEV.= 149.74', RRS IN 14" OAK

PROJECT REFERENCE NO. <b>1-5987A</b>	SHEET NO. <b>62</b>
ROADWAY DESIGN ENGINEER 5/18/2022	HYDRAULICS ENGINEER 5/19/2022
	

**DOCUMENT NOT CONSIDERED FINAL  
UNLESS ALL SIGNATURES COMPLETED**

	<small>4700 FALLS OF NEUSE ROAD, SUITE 100                  RALEIGH, NORTH CAROLINA 27615-9000                  (919) 851-6606 VOIC. (919) 851-6606 FAX                  NC License No.: F-0105</small>
	<b>MI ENGINEERING</b> 1011 SCHAUB DRIVE, SUITE 100 RALEIGH, NC 27608 (919) 851-6606 FIRM PE NUMBER: P-0671



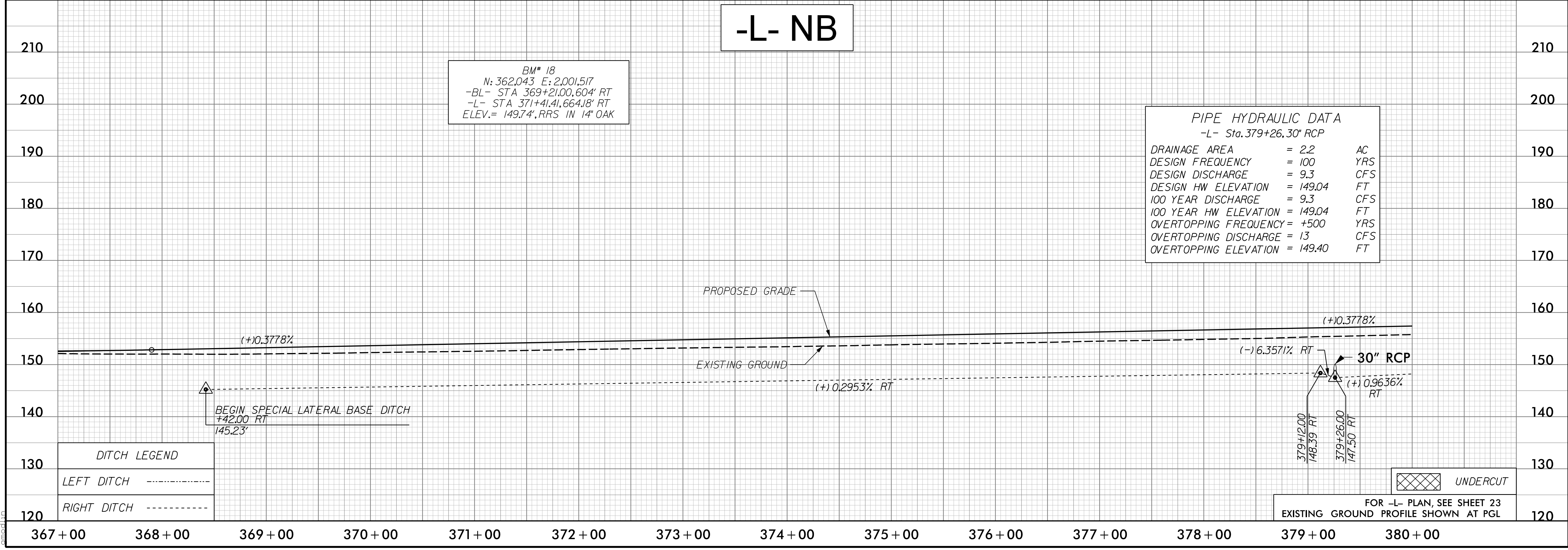
DITCH LEGEND	
LEFT DITCH	-----
RIGHT DITCH	-----

FOR -L- PLAN, SEE SHEET 23  
EXISTING GROUND PROFILE SHOWN AT PGL

# -L- NB

BM\* 18  
 N: 362.043 E: 2.001.517  
 -BL- STA 369+21.00, 604' RT  
 -L- STA 371+41.41, 664.18' RT  
 ELEV.= 149.74', RRS IN 14" OAK

PIPE HYDRAULIC DATA		
-L- Sta. 379+26.30' RCP		
DRAINAGE AREA	= 2.2	AC
DESIGN FREQUENCY	= 100	YRS
DESIGN DISCHARGE	= 9.3	CFS
DESIGN HW ELEVATION	= 149.04	FT
100 YEAR DISCHARGE	= 9.3	CFS
100 YEAR HW ELEVATION	= 149.04	FT
OVERTOPPING FREQUENCY	= +500	YRS
OVERTOPPING DISCHARGE	= 13	CFS
OVERTOPPING ELEVATION	= 149.40	FT



DITCH LEGEND	
LEFT DITCH	-----
RIGHT DITCH	-----



FOR -L- PLAN, SEE SHEET 23  
EXISTING GROUND PROFILE SHOWN AT PGL

D:\18\2022\05\125\0500\CAD\15987A\Roadway\Proj\15987A\_RDY\_PSH\_PFL\_062.dgn