

5/28/2022

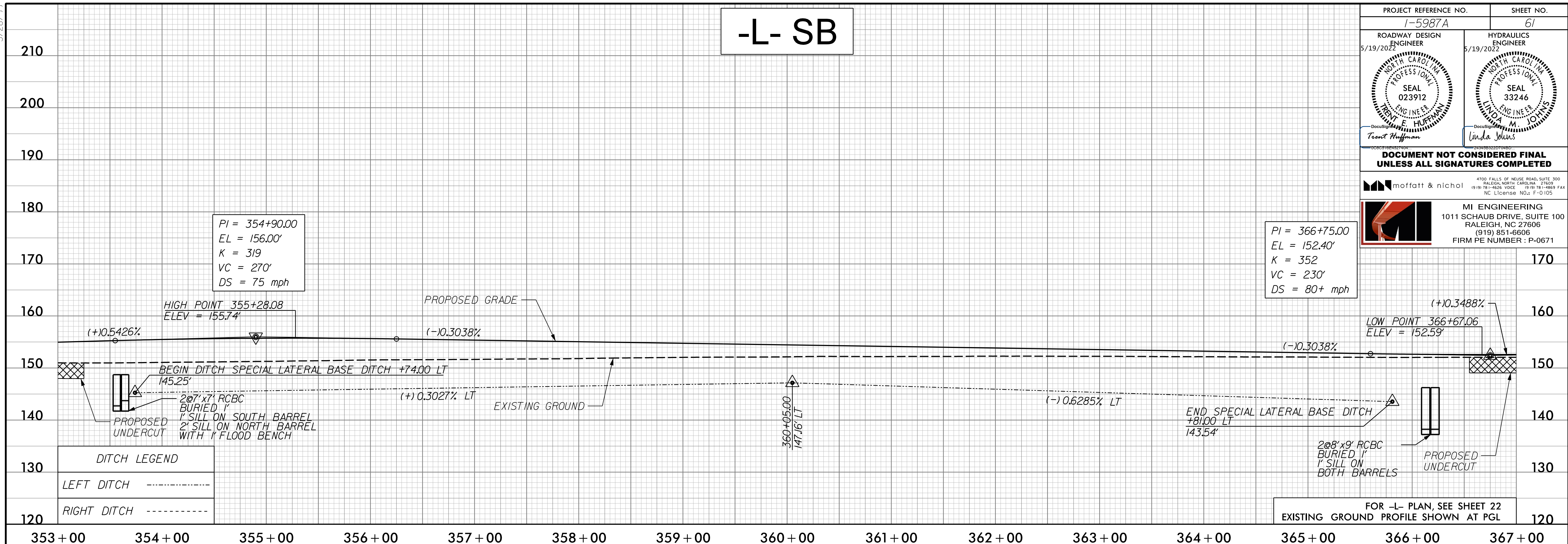
-L- SB

PROJECT REFERENCE NO. 1-5987A	SHEET NO. 61
ROADWAY DESIGN ENGINEER 5/19/2022 Trent Hoffman SEAL 023912 ENGINEER NORTH CAROLINA PROFESSIONAL ENGINEERS ASSOCIATION	HYDRAULICS ENGINEER 5/19/2022 Linda Johns SEAL 33246 ENGINEER NORTH CAROLINA PROFESSIONAL ENGINEERS ASSOCIATION

**DOCUMENT NOT CONSIDERED FINAL
UNLESS ALL SIGNATURES COMPLETED**

moffatt & nichol
4700 FALLS OF WELLS ROAD, SUITE 100
RALEIGH, NORTH CAROLINA 27608
(919) 851-6600
NC License No.: F-0 105

MI ENGINEERING
1011 SCHAUB DRIVE, SUITE 100
RALEIGH, NC 27608
(919) 851-6606
FIRM PE NUMBER: P-0671



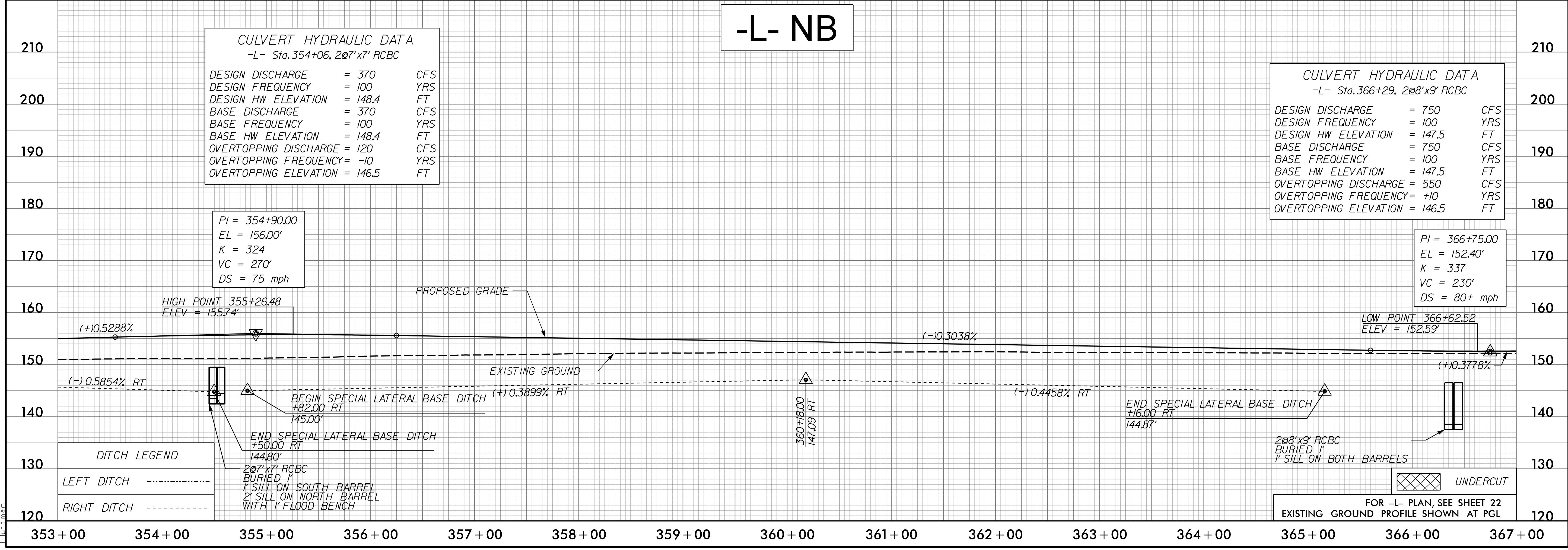
-L- NB

CULVERT HYDRAULIC DATA
-L- Sta. 354+06, 2@7'x7' RCBC

DESIGN DISCHARGE	= 370	CFS
DESIGN FREQUENCY	= 100	YRS
DESIGN HW ELEVATION	= 148.4	FT
BASE DISCHARGE	= 370	CFS
BASE FREQUENCY	= 100	YRS
BASE HW ELEVATION	= 148.4	FT
OVERTOPPING DISCHARGE	= 120	CFS
OVERTOPPING FREQUENCY	= -10	YRS
OVERTOPPING ELEVATION	= 146.5	FT

CULVERT HYDRAULIC DATA
-L- Sta. 366+29, 2@8'x9' RCBC

DESIGN DISCHARGE	= 750	CFS
DESIGN FREQUENCY	= 100	YRS
DESIGN HW ELEVATION	= 147.5	FT
BASE DISCHARGE	= 750	CFS
BASE FREQUENCY	= 100	YRS
BASE HW ELEVATION	= 147.5	FT
OVERTOPPING DISCHARGE	= 550	CFS
OVERTOPPING FREQUENCY	= +10	YRS
OVERTOPPING ELEVATION	= 146.5	FT



5/19/2022 10:25:05.00 CAD\15987A\Roadway\Proj\15987A_RDY_PSH_PFL_061.dgn