

5/28/2012

# -L- SB

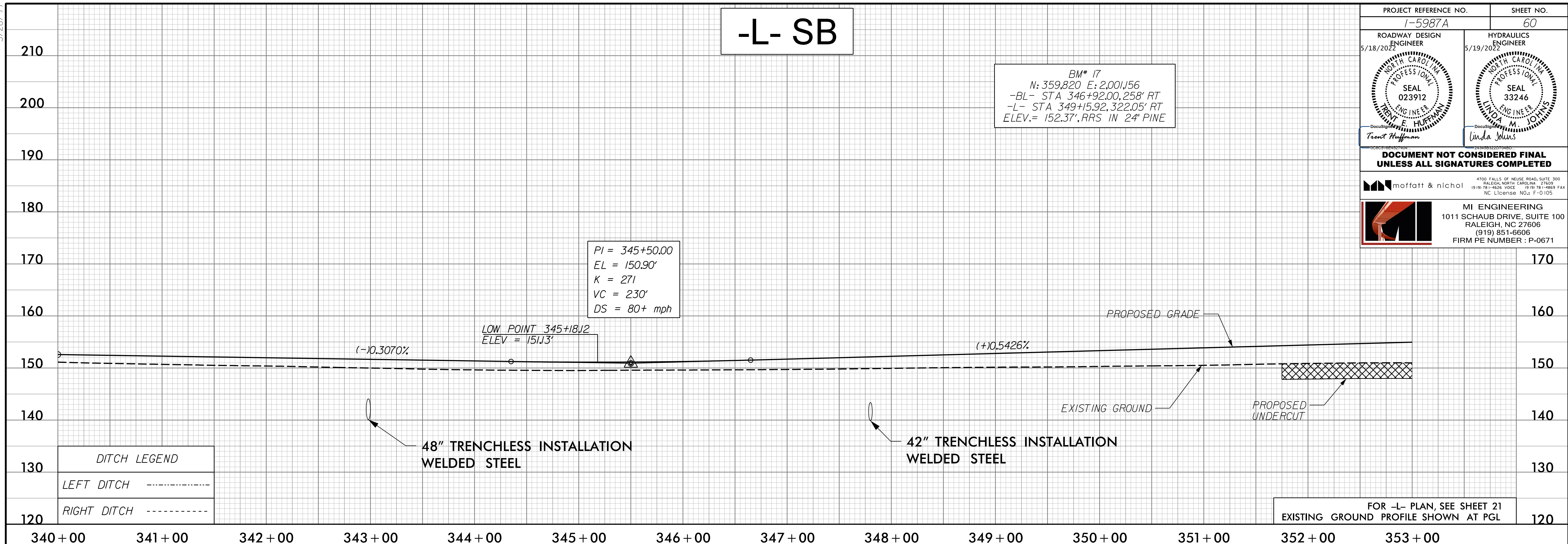
BM\* 17  
 N: 359,820 E: 2,001,156  
 -BL- STA 346+92.00, 258' RT  
 -L- STA 349+15.92, 322.05' RT  
 ELEV. = 152.37', RRS IN 24" PINE

PROJECT REFERENCE NO. 1-5987A	SHEET NO. 60
ROADWAY DESIGN ENGINEER 5/18/2012 Trent Hoffman	HYDRAULICS ENGINEER 5/19/2012 Linda Johns

**DOCUMENT NOT CONSIDERED FINAL  
 UNLESS ALL SIGNATURES COMPLETED**

4700 FALLS OF NEUSE ROAD, SUITE 100  
 RALEIGH, NORTH CAROLINA 27608  
 (919) 851-6606 VOIC (919) 851-6606 FAX  
 NC License No.: F-0 105

**MI ENGINEERING**  
 1011 SCHAUB DRIVE, SUITE 100  
 RALEIGH, NC 27608  
 (919) 851-6606  
 FIRM PE NUMBER : P-0671



**DITCH LEGEND**

LEFT DITCH	-----
RIGHT DITCH	-----

FOR -L- PLAN, SEE SHEET 21  
 EXISTING GROUND PROFILE SHOWN AT PGL

# -L- NB

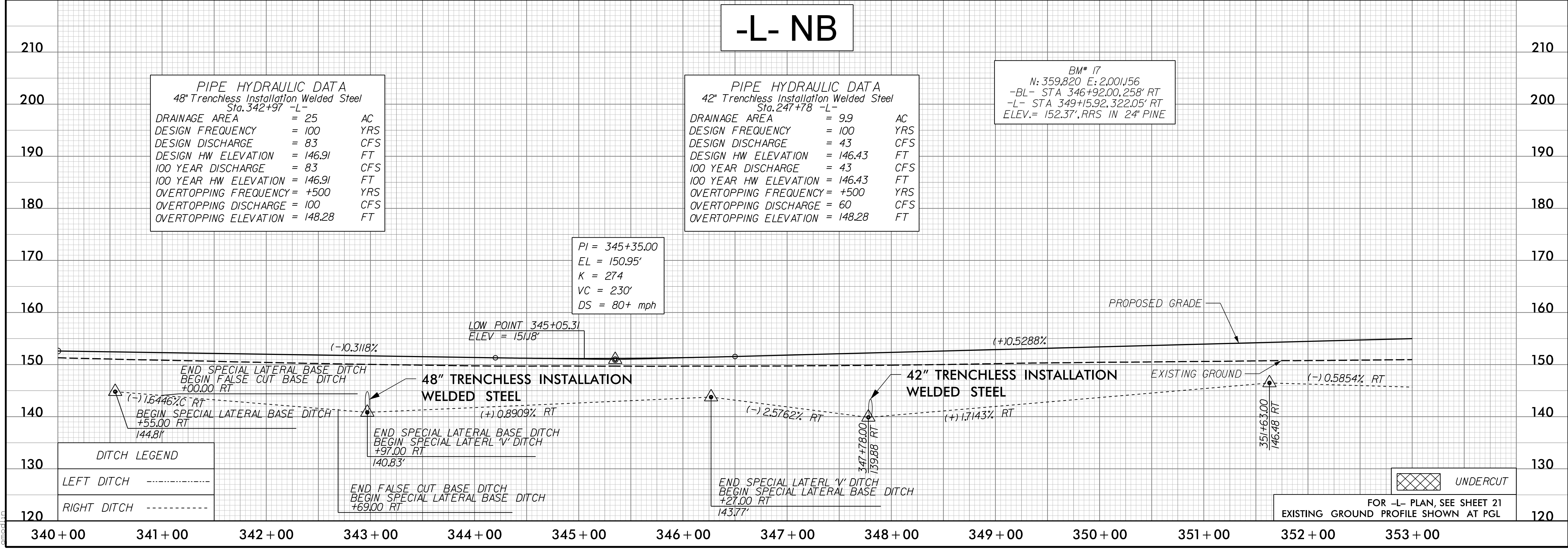
**PIPE HYDRAULIC DATA**  
 48" Trenchless Installation Welded Steel  
 Sta. 342+97 -L-

DRAINAGE AREA	= 25	AC
DESIGN FREQUENCY	= 100	YRS
DESIGN DISCHARGE	= 83	CFS
DESIGN HW ELEVATION	= 146.91	FT
100 YEAR DISCHARGE	= 83	CFS
100 YEAR HW ELEVATION	= 146.91	FT
OVERTOPPING FREQUENCY	= +500	YRS
OVERTOPPING DISCHARGE	= 100	CFS
OVERTOPPING ELEVATION	= 148.28	FT

**PIPE HYDRAULIC DATA**  
 42" Trenchless Installation Welded Steel  
 Sta. 247+78 -L-

DRAINAGE AREA	= 9.9	AC
DESIGN FREQUENCY	= 100	YRS
DESIGN DISCHARGE	= 43	CFS
DESIGN HW ELEVATION	= 146.43	FT
100 YEAR DISCHARGE	= 43	CFS
100 YEAR HW ELEVATION	= 146.43	FT
OVERTOPPING FREQUENCY	= +500	YRS
OVERTOPPING DISCHARGE	= 60	CFS
OVERTOPPING ELEVATION	= 148.28	FT

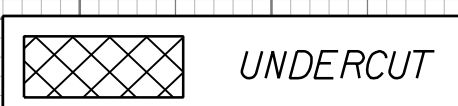
BM\* 17  
 N: 359,820 E: 2,001,156  
 -BL- STA 346+92.00, 258' RT  
 -L- STA 349+15.92, 322.05' RT  
 ELEV. = 152.37', RRS IN 24" PINE



**DITCH LEGEND**

LEFT DITCH	-----
RIGHT DITCH	-----

FOR -L- PLAN, SEE SHEET 21  
 EXISTING GROUND PROFILE SHOWN AT PGL



G:\4\2012\125\0500\CAD\15987A\Roadway\Proj\15987A\_RDY\_PSH\_PFL\_060.dgn  
 5/28/2012 11:25:05 AM