

5/28/2022

-L- SB

PROJECT REFERENCE NO. 1-5987A	SHEET NO. 57
ROADWAY DESIGN ENGINEER 5/18/2022	HYDRAULICS ENGINEER 5/19/2022
Documented by: Steve Anthony Dean Documented by: Will Matthews	
DOCUMENT NOT CONSIDERED FINAL UNLESS ALL SIGNATURES COMPLETED	
NV5 ENGINEERS & CONSULTANTS, INC. 7500 E. INDEPENDENCE BLVD, STE 100 CHARLOTTE, NC 28227 P: 704.537.7300 www.NV5.com NC License # F-1333	

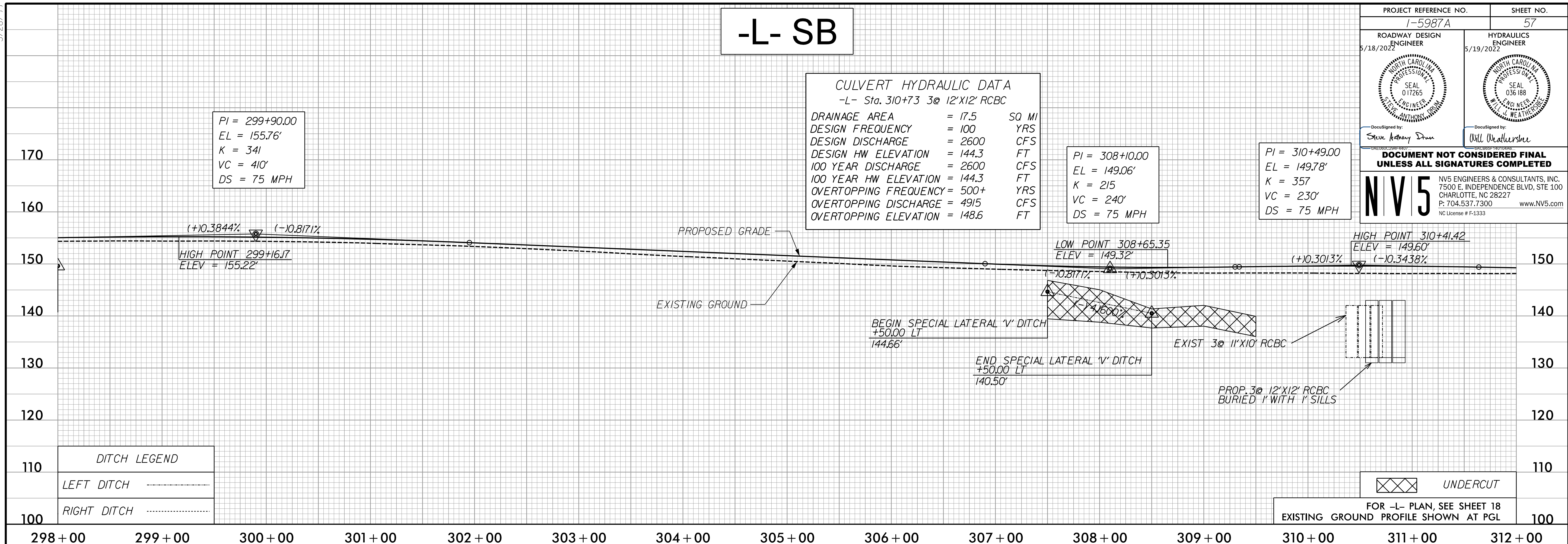
CULVERT HYDRAULIC DATA
-L- Sta. 310+73 3@ 12'X12' RCBC

DRAINAGE AREA	= 17.5	SQ MI
DESIGN FREQUENCY	= 100	YRS
DESIGN DISCHARGE	= 2600	CFS
DESIGN HW ELEVATION	= 144.3	FT
100 YEAR DISCHARGE	= 2600	CFS
100 YEAR HW ELEVATION	= 144.3	FT
OVERTOPPING FREQUENCY	= 500+	YRS
OVERTOPPING DISCHARGE	= 4915	CFS
OVERTOPPING ELEVATION	= 148.6	FT

PI = 299+90.00
EL = 155.76'
K = 341
VC = 410'
DS = 75 MPH

PI = 308+10.00
EL = 149.06'
K = 215
VC = 240'
DS = 75 MPH

PI = 310+49.00
EL = 149.78'
K = 357
VC = 230'
DS = 75 MPH



DITCH LEGEND	
LEFT DITCH	-----
RIGHT DITCH

FOR -L- PLAN, SEE SHEET 18
EXISTING GROUND PROFILE SHOWN AT PGL

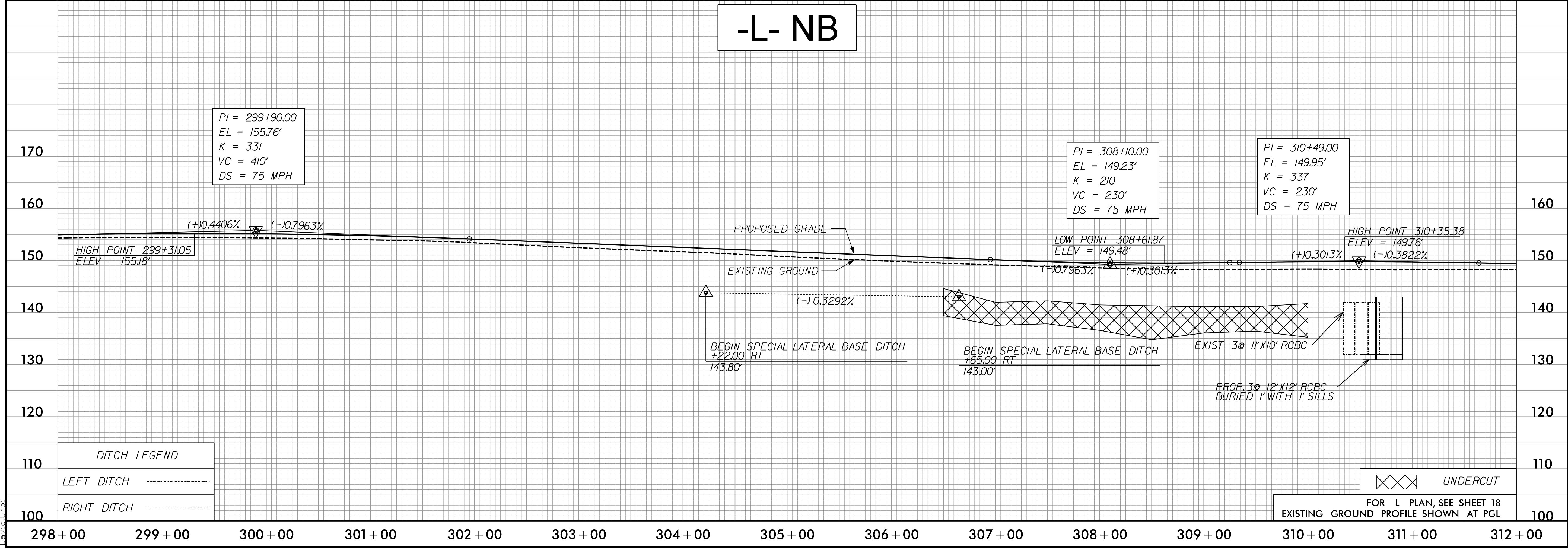
-L- NB

PROJECT REFERENCE NO. 1-5987A	SHEET NO. 57
ROADWAY DESIGN ENGINEER 5/18/2022	HYDRAULICS ENGINEER 5/19/2022
Documented by: Steve Anthony Dean Documented by: Will Matthews	
DOCUMENT NOT CONSIDERED FINAL UNLESS ALL SIGNATURES COMPLETED	
NV5 ENGINEERS & CONSULTANTS, INC. 7500 E. INDEPENDENCE BLVD, STE 100 CHARLOTTE, NC 28227 P: 704.537.7300 www.NV5.com NC License # F-1333	

PI = 308+10.00
EL = 149.23'
K = 210
VC = 230'
DS = 75 MPH

PI = 310+49.00
EL = 149.95'
K = 337
VC = 230'
DS = 75 MPH

PI = 299+90.00
EL = 155.76'
K = 331
VC = 410'
DS = 75 MPH



DITCH LEGEND	
LEFT DITCH	-----
RIGHT DITCH

FOR -L- PLAN, SEE SHEET 18
EXISTING GROUND PROFILE SHOWN AT PGL

3/19/2022
C:\Users\David\OneDrive\Documents\15987A_RDY_PSH_PFL_57.dgn
David