

5/28/2022

# -L- SB

PROJECT REFERENCE NO. <b>1-5987A</b>	SHEET NO. <b>53</b>
ROADWAY DESIGN ENGINEER 5/18/2022	HYDRAULICS ENGINEER 5/19/2022
DOCUMENT NOT CONSIDERED FINAL UNLESS ALL SIGNATURES COMPLETED	
<b>NV5</b> NV5 ENGINEERS & CONSULTANTS, INC. 7500 E. INDEPENDENCE BLVD, STE 100 CHARLOTTE, NC 28227 P: 704.537.7300 www.NV5.com NC License # F-1333	

**CULVERT HYDRAULIC DATA**  
-L- Sta. 242+92 8'X7' RCBC

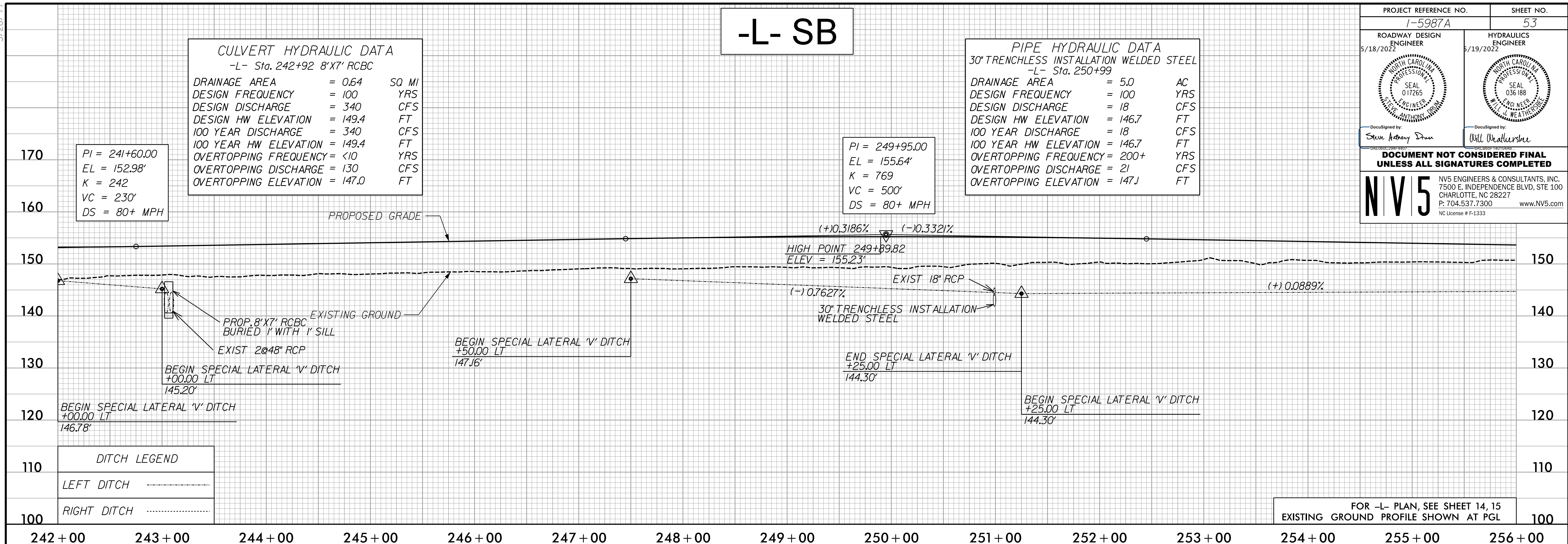
DRAINAGE AREA	= 0.64	SQ MI
DESIGN FREQUENCY	= 100	YRS
DESIGN DISCHARGE	= 340	CFS
DESIGN HW ELEVATION	= 149.4	FT
100 YEAR DISCHARGE	= 340	CFS
100 YEAR HW ELEVATION	= 149.4	FT
OVERTOPPING FREQUENCY	= <10	YRS
OVERTOPPING DISCHARGE	= 130	CFS
OVERTOPPING ELEVATION	= 147.0	FT

**PIPE HYDRAULIC DATA**  
30" TRENCHLESS INSTALLATION WELDED STEEL  
-L- Sta. 250+99

DRAINAGE AREA	= 5.0	AC
DESIGN FREQUENCY	= 100	YRS
DESIGN DISCHARGE	= 18	CFS
DESIGN HW ELEVATION	= 146.7	FT
100 YEAR DISCHARGE	= 18	CFS
100 YEAR HW ELEVATION	= 146.7	FT
OVERTOPPING FREQUENCY	= 200+	YRS
OVERTOPPING DISCHARGE	= 21	CFS
OVERTOPPING ELEVATION	= 147.1	FT

PI = 241+60.00  
EL = 152.98'  
K = 242  
VC = 230'  
DS = 80+ MPH

PI = 249+95.00  
EL = 155.64'  
K = 769  
VC = 500'  
DS = 80+ MPH



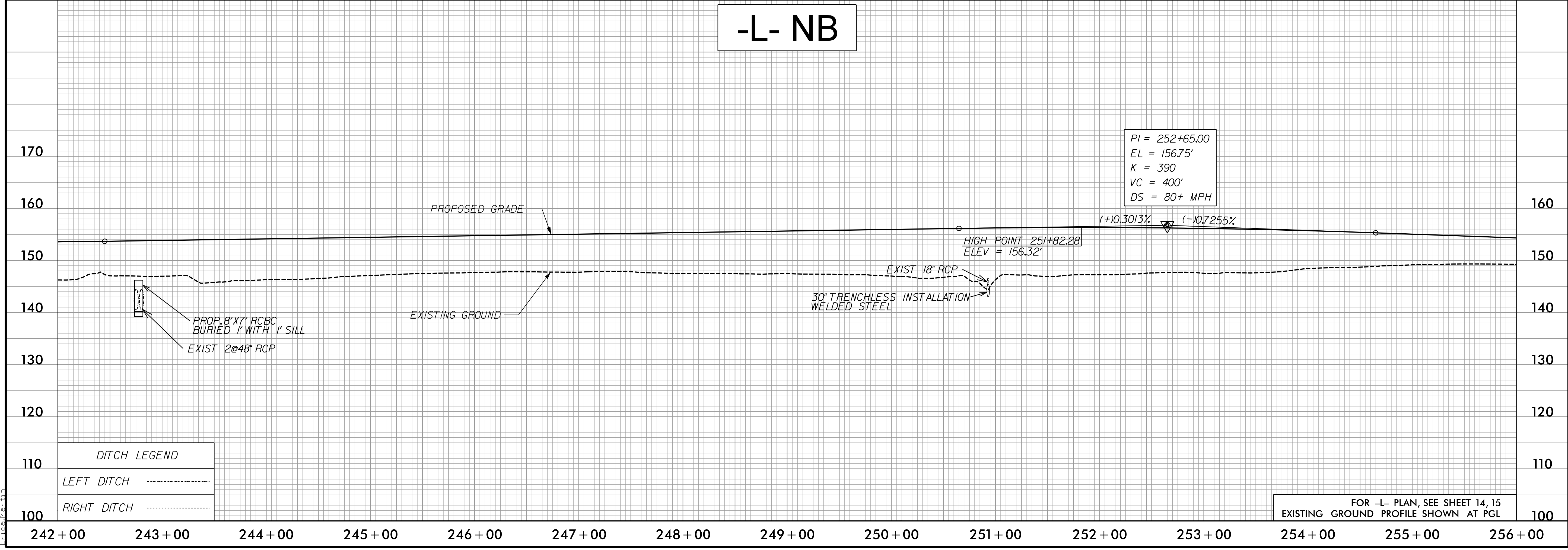
**DITCH LEGEND**

LEFT DITCH	-----
RIGHT DITCH	-----

FOR -L- PLAN, SEE SHEET 14, 15  
EXISTING GROUND PROFILE SHOWN AT PGL

# -L- NB

PI = 252+65.00  
EL = 156.75'  
K = 390  
VC = 400'  
DS = 80+ MPH



**DITCH LEGEND**

LEFT DITCH	-----
RIGHT DITCH	-----

FOR -L- PLAN, SEE SHEET 14, 15  
EXISTING GROUND PROFILE SHOWN AT PGL

5/17/2022  
C:\Users\p\OneDrive\Projects\15987A\RDY\_PSH\_PFL\_53.dgn