

5/28/2022

-L- SB

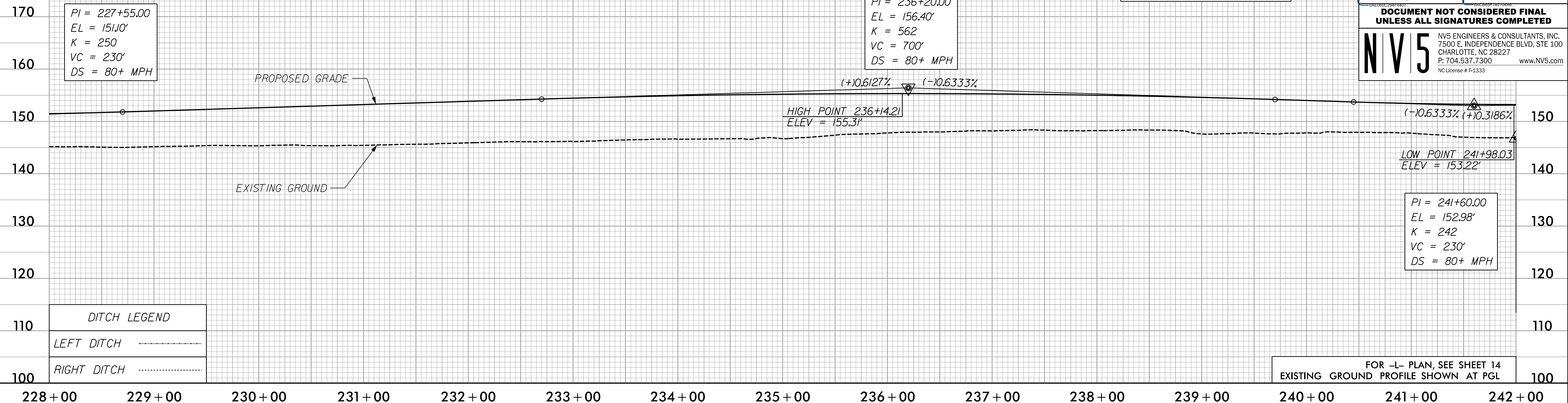
PROJECT REFERENCE NO. 1-5987A	SHEET NO. 52
ROADWAY DESIGN ENGINEER 5/18/2022	HYDRAULICS ENGINEER 5/19/2022
DocuSigned by: Steve Anthony Dean	DocuSigned by: Will Mathersne
DOCUMENT NOT CONSIDERED FINAL UNLESS ALL SIGNATURES COMPLETED	
NV5 ENGINEERS & CONSULTANTS, INC. 7500 E. INDEPENDENCE BLVD, STE 100 CHARLOTTE, NC 28227 P: 704.537.7300 www.NV5.com NC License # F-1333	

BM*10
 N: 348,805 E: 2,000,799
 -BLA- STA 236+77.00, 28' RT
 -L- STA 239+01.82, 152.26' RT
 ELEV. = 148.49'

PI = 227+55.00
 EL = 151.10'
 K = 250
 VC = 230'
 DS = 80+ MPH

PI = 236+20.00
 EL = 156.40'
 K = 562
 VC = 700'
 DS = 80+ MPH

PI = 241+60.00
 EL = 152.98'
 K = 242
 VC = 230'
 DS = 80+ MPH



DITCH LEGEND	
LEFT DITCH	-----
RIGHT DITCH	-----

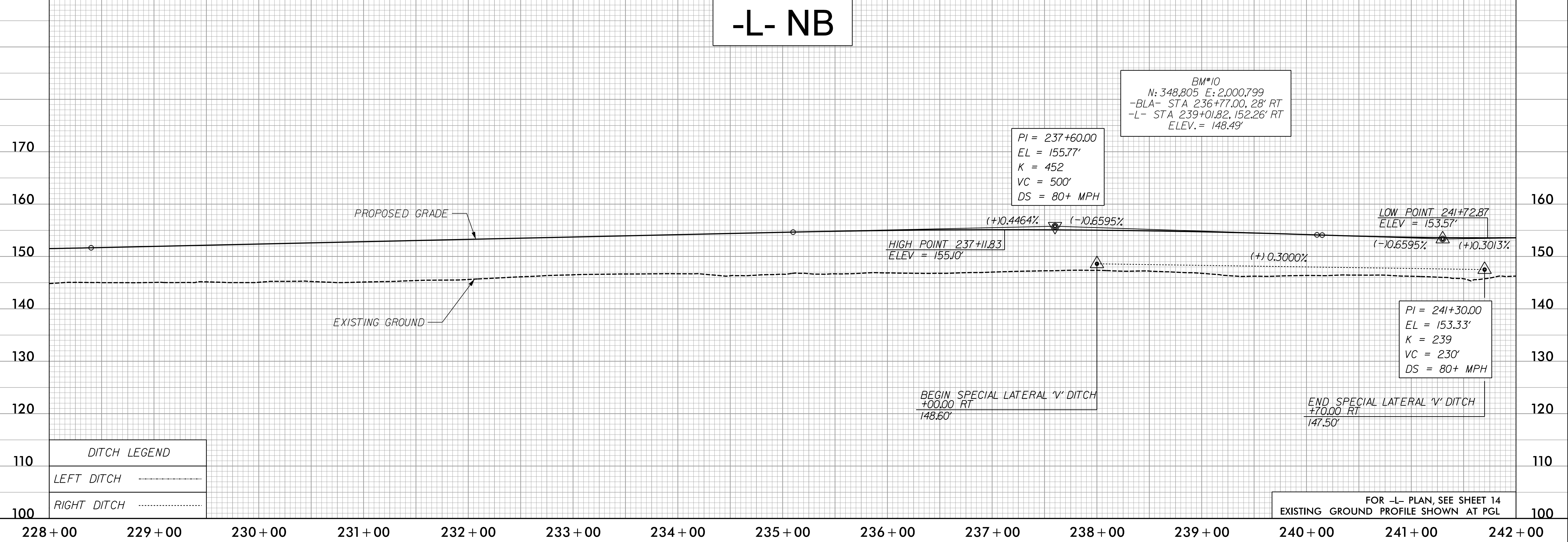
FOR -L- PLAN, SEE SHEET 14
 EXISTING GROUND PROFILE SHOWN AT PGL

-L- NB

BM*10
 N: 348,805 E: 2,000,799
 -BLA- STA 236+77.00, 28' RT
 -L- STA 239+01.82, 152.26' RT
 ELEV. = 148.49'

PI = 237+60.00
 EL = 155.77'
 K = 452
 VC = 500'
 DS = 80+ MPH

PI = 241+30.00
 EL = 153.33'
 K = 239
 VC = 230'
 DS = 80+ MPH



DITCH LEGEND	
LEFT DITCH	-----
RIGHT DITCH	-----

FOR -L- PLAN, SEE SHEET 14
 EXISTING GROUND PROFILE SHOWN AT PGL

3/30/2022
P:\Projects\15987A_L_RDY_PSH_PFL_52.dgn
David