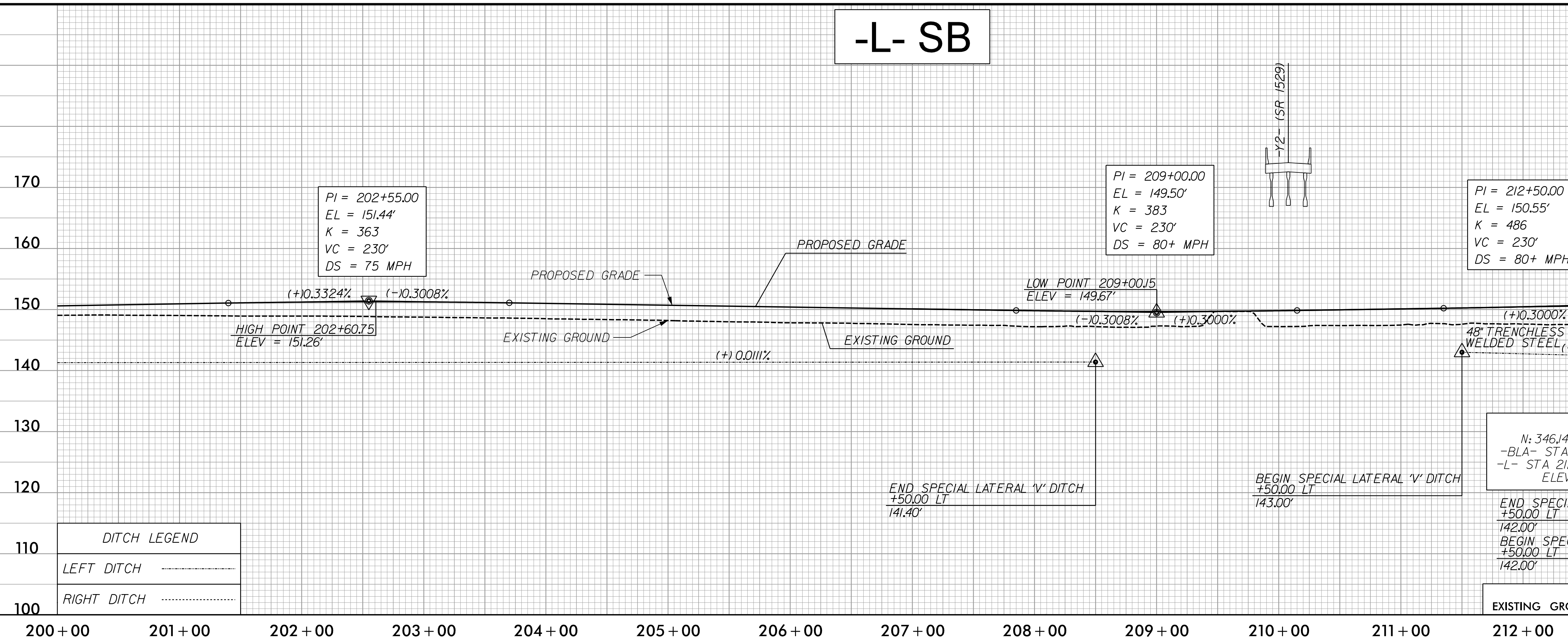


5/28/2022

-L- SB

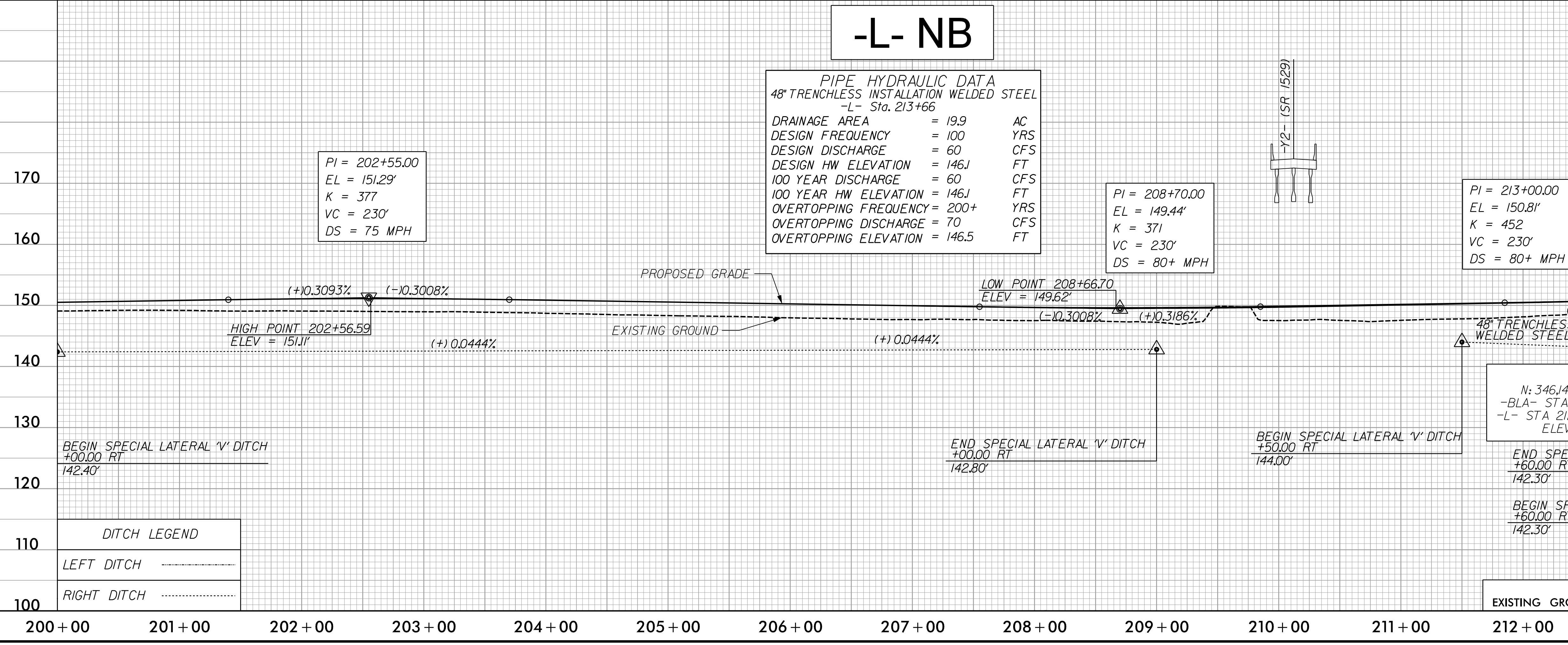
PROJECT REFERENCE NO. 1-5987A	SHEET NO. 50
ROADWAY DESIGN ENGINEER 5/18/2022 NORTH CAROLINA PROFESSIONAL SEAL 017265 ERIC ANTHONY DREW	HYDRAULICS ENGINEER 5/19/2022 NORTH CAROLINA PROFESSIONAL SEAL 036188 WILL MEATERS
<p>DOCUMENT NOT CONSIDERED FINAL UNLESS ALL SIGNATURES COMPLETED</p> <p>NV5 NV5 ENGINEERS & CONSULTANTS, INC. 7500 E. INDEPENDENCE BLVD, STE 100 CHARLOTTE, NC 28227 P: 704.537.7300 www.NV5.com NC License # F-1333</p>	



-L- NB

PIPE HYDRAULIC DATA
48" TRENCHLESS INSTALLATION WELDED STEEL
-L- Sta. 213+66

DRAINAGE AREA	= 19.9	AC
DESIGN FREQUENCY	= 100	YRS
DESIGN DISCHARGE	= 60	CFS
DESIGN HW ELEVATION	= 146J	FT
100 YEAR DISCHARGE	= 60	CFS
100 YEAR HW ELEVATION	= 146J	FT
OVERTOPPING FREQUENCY	= 200+	YRS
OVERTOPPING DISCHARGE	= 70	CFS
OVERTOPPING ELEVATION	= 146.5	FT



7/10/2022
N:\Projects\15987A_L\RDY_PSH_PFL_50.dgn
David