

5/28/2022

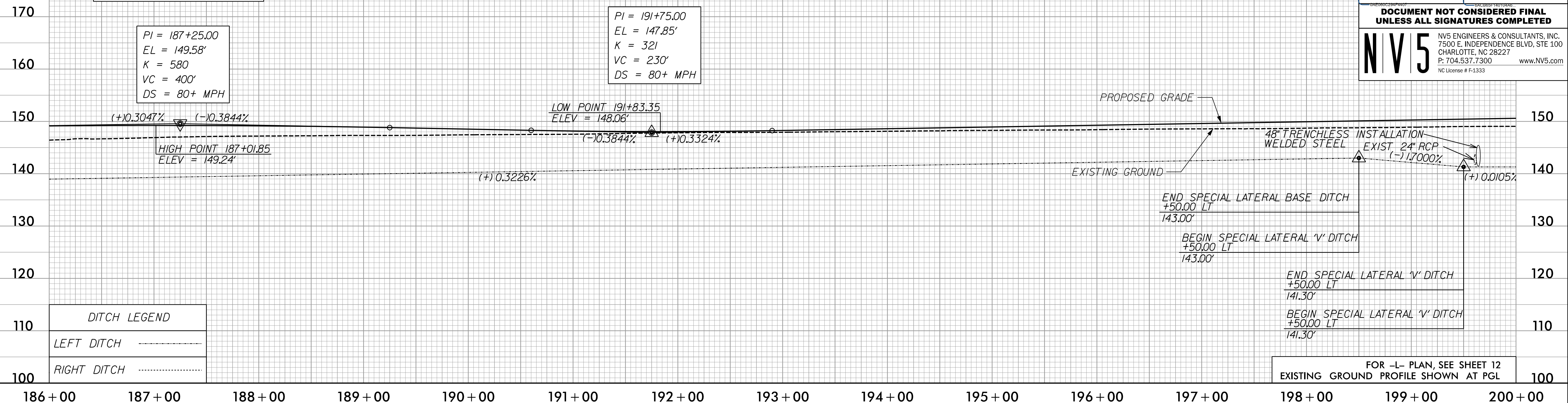
-L- SB

PROJECT REFERENCE NO. 1-5987A	SHEET NO. 49
ROADWAY DESIGN ENGINEER 5/18/2022 STEVE ANTHONY DRAIN	HYDRAULICS ENGINEER 5/19/2022 WILL MEATHURSHIE
DOCUMENT NOT CONSIDERED FINAL UNLESS ALL SIGNATURES COMPLETED	
NV5 ENGINEERS & CONSULTANTS, INC. 7500 E. INDEPENDENCE BLVD, STE 100 CHARLOTTE, NC 28227 P: 704.537.7300 www.NV5.com NC License # F-1333	

BM*8
N: 343,921 E: 2,000,564
-BLA- STA 187+86.00, 16' RT
-L- STA 190+12.68, 115.60' RT
ELEV. = 145.19'

PI = 187+25.00
EL = 149.58'
K = 580
VC = 400'
DS = 80+ MPH

PI = 191+75.00
EL = 147.85'
K = 321
VC = 230'
DS = 80+ MPH



DITCH LEGEND	
LEFT DITCH	-----
RIGHT DITCH	-----

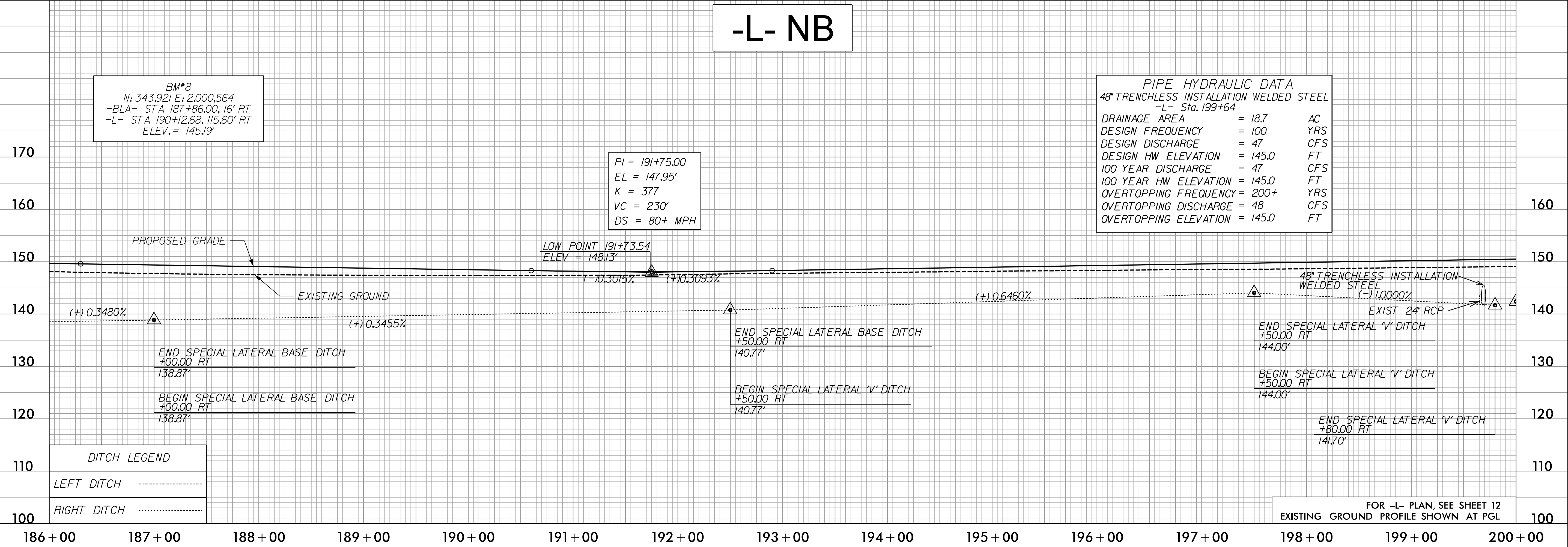
FOR -L- PLAN, SEE SHEET 12
EXISTING GROUND PROFILE SHOWN AT PGL

-L- NB

BM*8
N: 343,921 E: 2,000,564
-BLA- STA 187+86.00, 16' RT
-L- STA 190+12.68, 115.60' RT
ELEV. = 145.19'

PI = 191+75.00
EL = 147.95'
K = 377
VC = 230'
DS = 80+ MPH

PIPE HYDRAULIC DATA		
48" TRENCHLESS INSTALLATION WELDED STEEL		
-L- Sta. 199+64		
DRAINAGE AREA	= 18.7	AC
DESIGN FREQUENCY	= 100	YRS
DESIGN DISCHARGE	= 47	CFS
DESIGN HW ELEVATION	= 145.0	FT
100 YEAR DISCHARGE	= 47	CFS
100 YEAR HW ELEVATION	= 145.0	FT
OVERTOPPING FREQUENCY	= 200+	YRS
OVERTOPPING DISCHARGE	= 48	CFS
OVERTOPPING ELEVATION	= 145.0	FT



DITCH LEGEND	
LEFT DITCH	-----
RIGHT DITCH	-----

FOR -L- PLAN, SEE SHEET 12
EXISTING GROUND PROFILE SHOWN AT PGL

3/30/2022
C:\Users\David\Documents\Projects\15987A_RDY_PSH_PFL_49.dgn