

5/28/2022

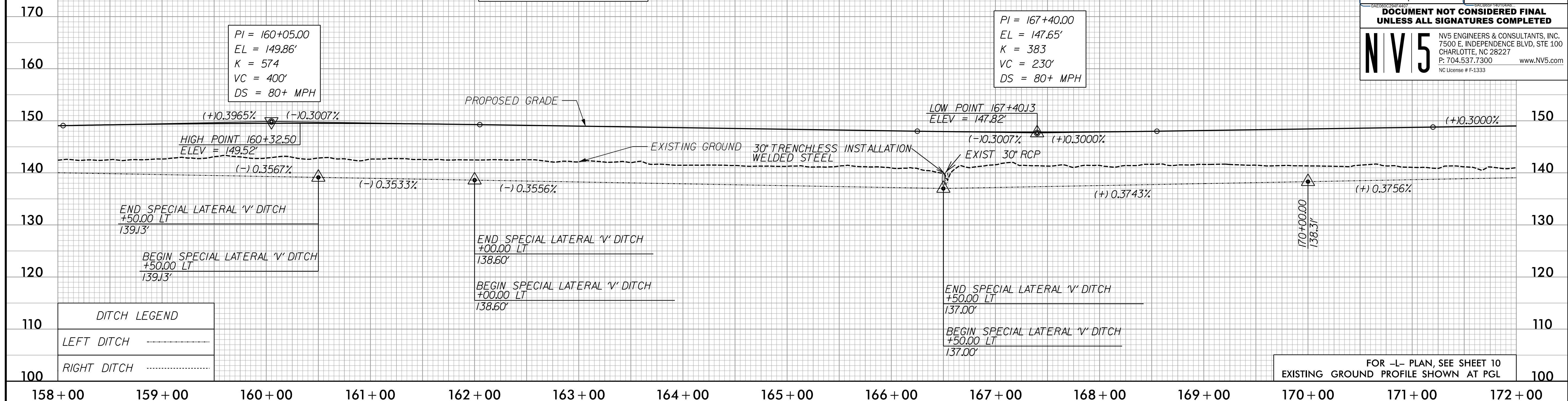
# -L- SB

PROJECT REFERENCE NO. 1-5987A	SHEET NO. 47
ROADWAY DESIGN ENGINEER 5/18/2022	HYDRAULICS ENGINEER 5/19/2022
DocuSigned by: Steve Anthony Druin	DocuSigned by: Will Mathews
<b>DOCUMENT NOT CONSIDERED FINAL UNLESS ALL SIGNATURES COMPLETED</b>	
<b>NV5</b>	NV5 ENGINEERS & CONSULTANTS, INC. 7500 E. INDEPENDENCE BLVD, STE 100 CHARLOTTE, NC 28227 P: 704.537.7300 www.NV5.com NC License # F-1333

BM#7  
N: 341.227 E: 2.000.067  
-BLA- STA 160+40.00, 32' RT  
-L- STA 162+91.69, 134.31' RT  
ELEV. = 143.25'

PI = 160+05.00  
EL = 149.86'  
K = 574  
VC = 400'  
DS = 80+ MPH

PI = 167+40.00  
EL = 147.65'  
K = 383  
VC = 230'  
DS = 80+ MPH



# -L- NB

BM#7  
N: 341.227 E: 2.000.067  
-BLA- STA 160+40.00, 32' RT  
-L- STA 162+91.69, 134.31' RT  
ELEV. = 143.25'

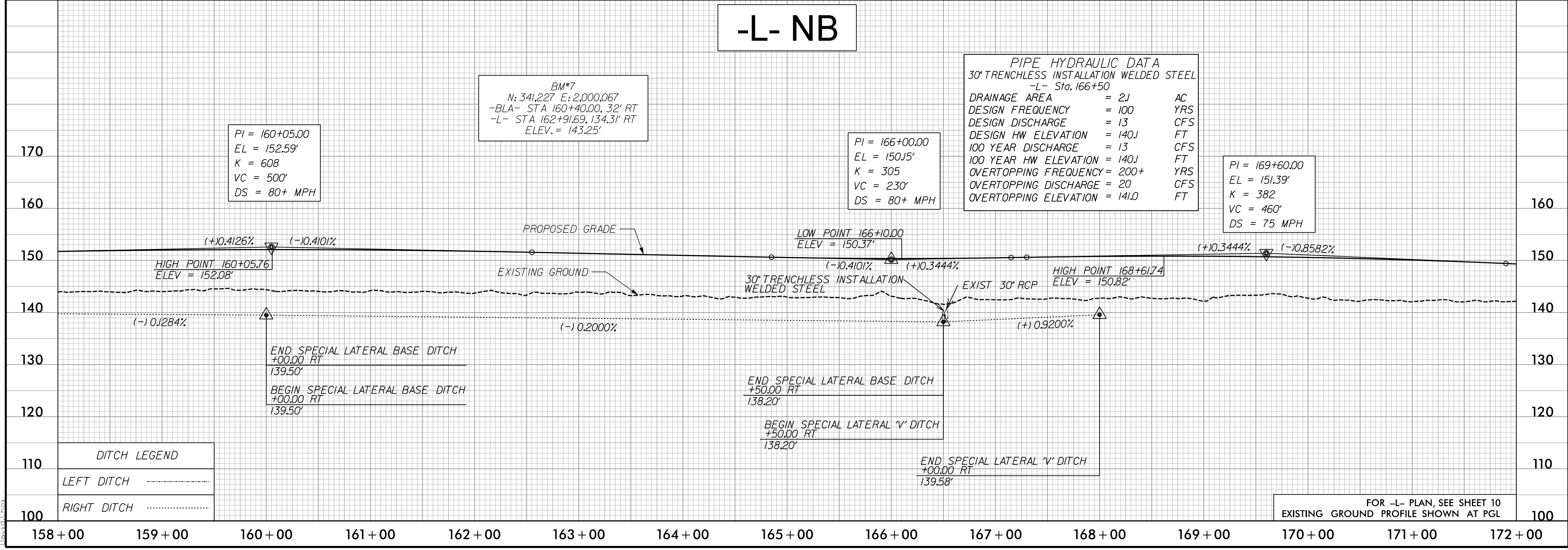
PI = 160+05.00  
EL = 152.59'  
K = 608  
VC = 500'  
DS = 80+ MPH

PI = 166+00.00  
EL = 150.15'  
K = 305  
VC = 230'  
DS = 80+ MPH

PIPE HYDRAULIC DATA  
30" TRENCHLESS INSTALLATION WELDED STEEL  
-L- Sta. 166+50

DRAINAGE AREA	= 2.1	AC
DESIGN FREQUENCY	= 100	YRS
DESIGN DISCHARGE	= 13	CFS
DESIGN HW ELEVATION	= 140.1	FT
100 YEAR DISCHARGE	= 13	CFS
100 YEAR HW ELEVATION	= 140.1	FT
OVERTOPPING FREQUENCY	= 200+	YRS
OVERTOPPING DISCHARGE	= 20	CFS
OVERTOPPING ELEVATION	= 141.0	FT

PI = 169+60.00  
EL = 151.39'  
K = 382  
VC = 460'  
DS = 75 MPH



5/19/2022  
P:\Projects\15987A\_RDY\_PSH\_PFL\_47.dgn  
David