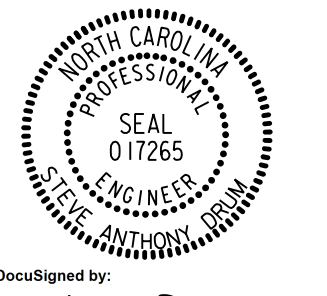
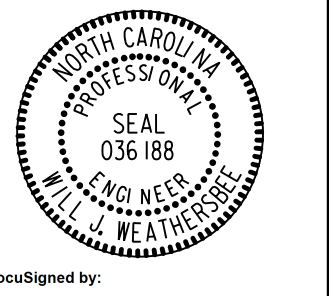



5/28/2022

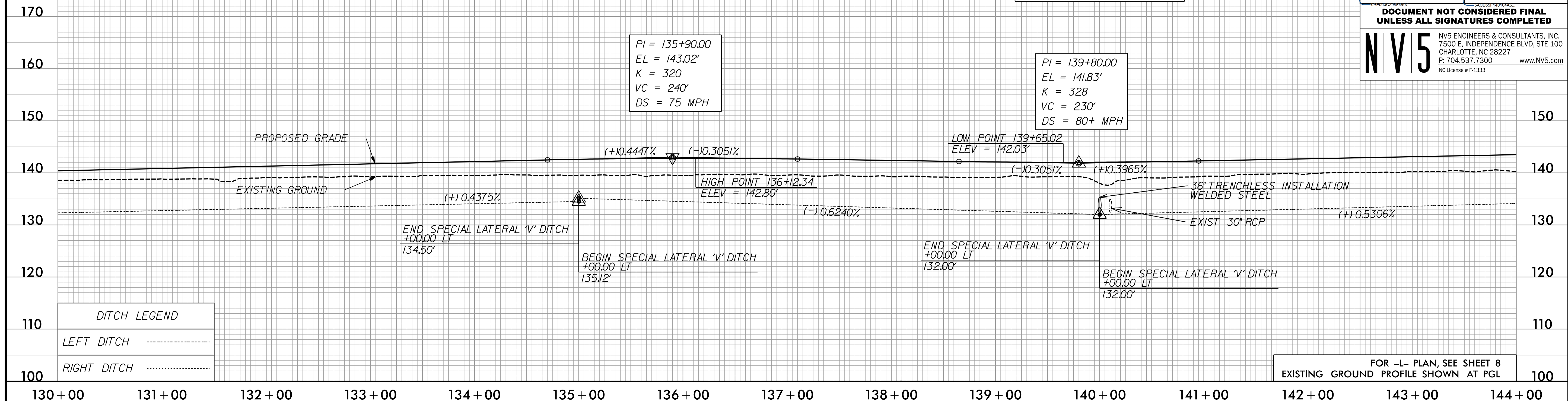
-L- SB

PROJECT REFERENCE NO. 1-5987A	SHEET NO. 45
ROADWAY DESIGN ENGINEER 5/18/2022 	HYDRAULICS ENGINEER 5/19/2022 
DOCUMENT NOT CONSIDERED FINAL UNLESS ALL SIGNATURES COMPLETED	
 NV5 NV5 ENGINEERS & CONSULTANTS, INC. 7500 E. INDEPENDENCE BLVD, STE 100 CHARLOTTE, NC 28227 P: 704.537.7300 www.NV5.com NC License # F-1333	

BM*6
 N: 339,055 E: 1,999,458
 -BLA- STA 137+85.00, 26' RT
 -L- STA 140+36.57, 116.56' RT
 ELEV. = 139.14'

PI = 135+90.00
 EL = 143.02'
 K = 320
 VC = 240'
 DS = 75 MPH

PI = 139+80.00
 EL = 141.83'
 K = 328
 VC = 230'
 DS = 80+ MPH



DITCH LEGEND	
LEFT DITCH	-----
RIGHT DITCH	-----

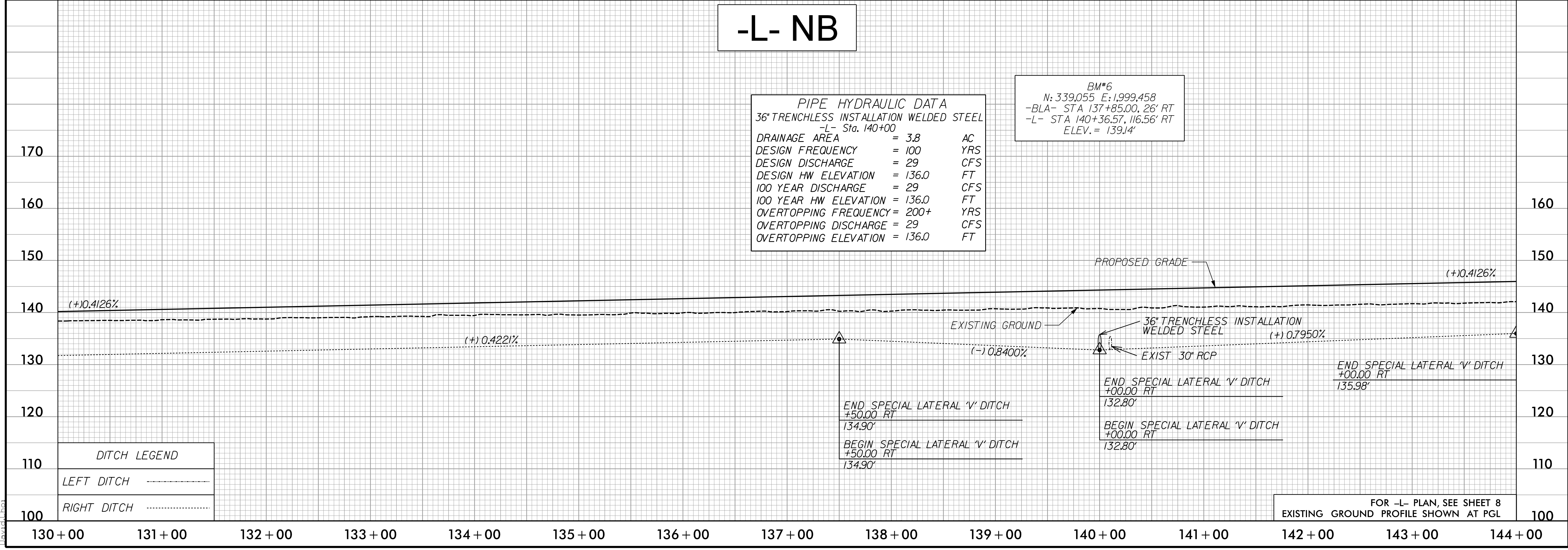
FOR -L- PLAN, SEE SHEET 8
 EXISTING GROUND PROFILE SHOWN AT PGL

-L- NB

PIPE HYDRAULIC DATA
 36" TRENCHLESS INSTALLATION WELDED STEEL
 -L- Sta. 140+00

DRAINAGE AREA	= 3.8	AC
DESIGN FREQUENCY	= 100	YRS
DESIGN DISCHARGE	= 29	CFS
DESIGN HW ELEVATION	= 136.0	FT
100 YEAR DISCHARGE	= 29	CFS
100 YEAR HW ELEVATION	= 136.0	FT
OVERTOPPING FREQUENCY	= 200+	YRS
OVERTOPPING DISCHARGE	= 29	CFS
OVERTOPPING ELEVATION	= 136.0	FT

BM*6
 N: 339,055 E: 1,999,458
 -BLA- STA 137+85.00, 26' RT
 -L- STA 140+36.57, 116.56' RT
 ELEV. = 139.14'



DITCH LEGEND	
LEFT DITCH	-----
RIGHT DITCH	-----

FOR -L- PLAN, SEE SHEET 8
 EXISTING GROUND PROFILE SHOWN AT PGL

7/19/2022
 P:\Projects\15987A_RDY_PSH_PFL_45.dgn
 David Johnson