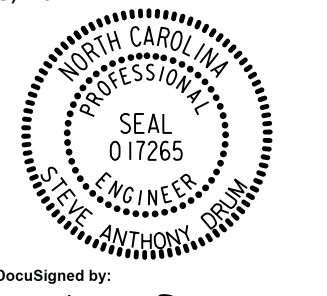

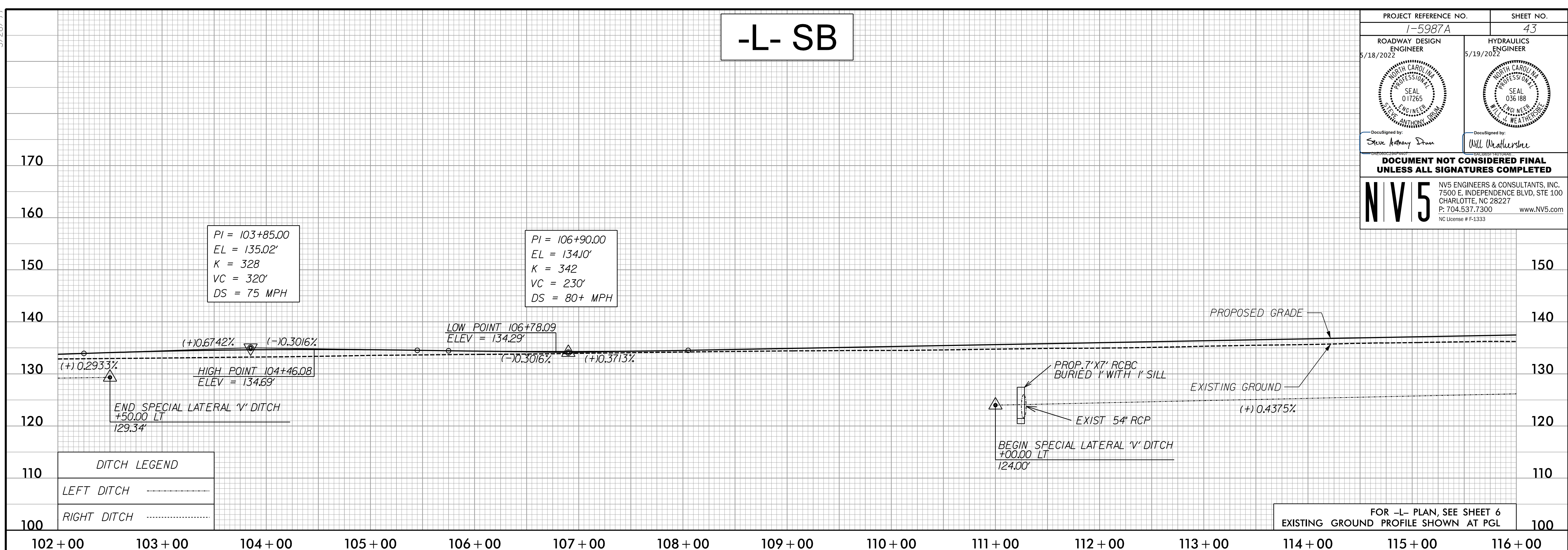


5/28/2022

-L- SB

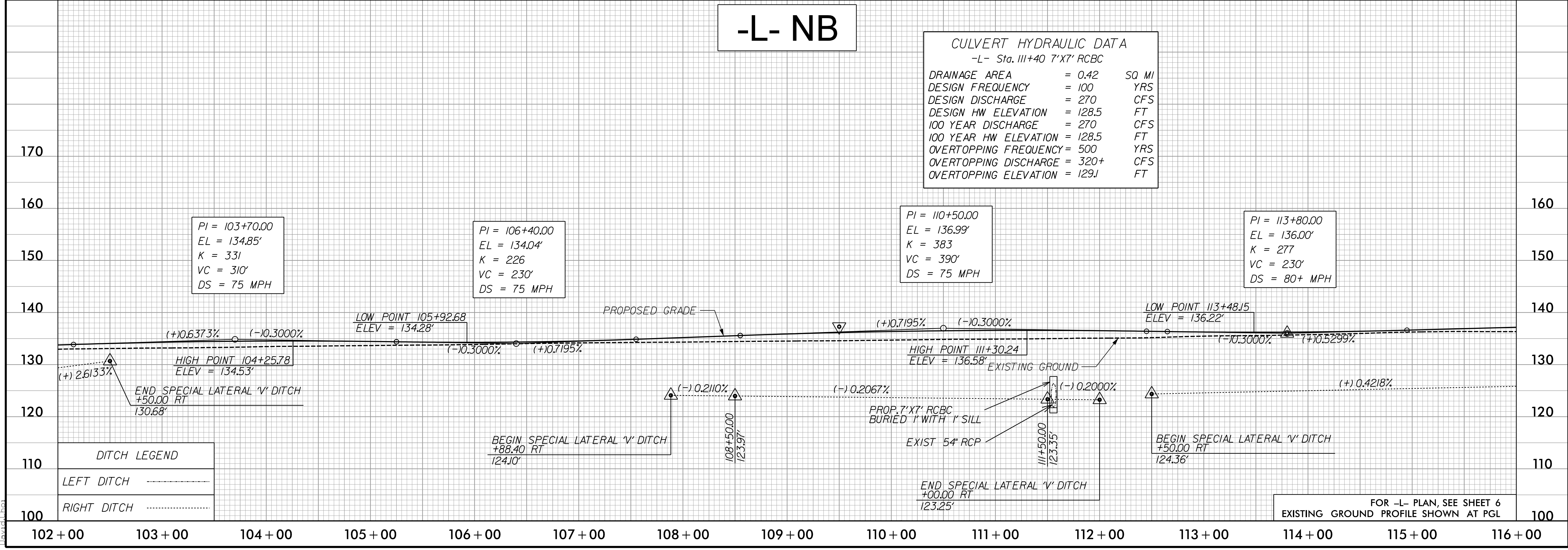
PROJECT REFERENCE NO. 1-5987A	SHEET NO. 43
ROADWAY DESIGN ENGINEER 5/18/2022 	HYDRAULICS ENGINEER 5/19/2022 
DocuSigned by: Steve Anthony Dean	
DocuSigned by: Will Weatherstone	
DOCUMENT NOT CONSIDERED FINAL UNLESS ALL SIGNATURES COMPLETED	
NV5 NV5 ENGINEERS & CONSULTANTS, INC. 7500 E. INDEPENDENCE BLVD, STE 100 CHARLOTTE, NC 28227 P: 704.537.7300 www.NV5.com NC License # F-1333	



-L- NB

CULVERT HYDRAULIC DATA
-L- Sta. 111+40 7'x7' RCBC

DRAINAGE AREA	= 0.42	SQ MI
DESIGN FREQUENCY	= 100	YRS
DESIGN DISCHARGE	= 270	CFS
DESIGN HW ELEVATION	= 128.5	FT
100 YEAR DISCHARGE	= 270	CFS
100 YEAR HW ELEVATION	= 128.5	FT
OVERTOPPING FREQUENCY	= 500	YRS
OVERTOPPING DISCHARGE	= 320+	CFS
OVERTOPPING ELEVATION	= 129J	FT



7/19/2022
C:\Users\David\OneDrive\Documents\15987A_RDY_PSH_PFL_43.dgn
David