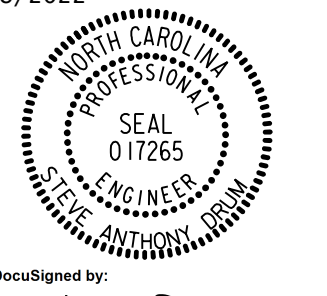
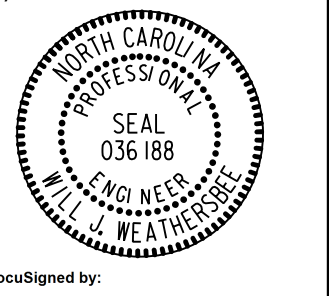

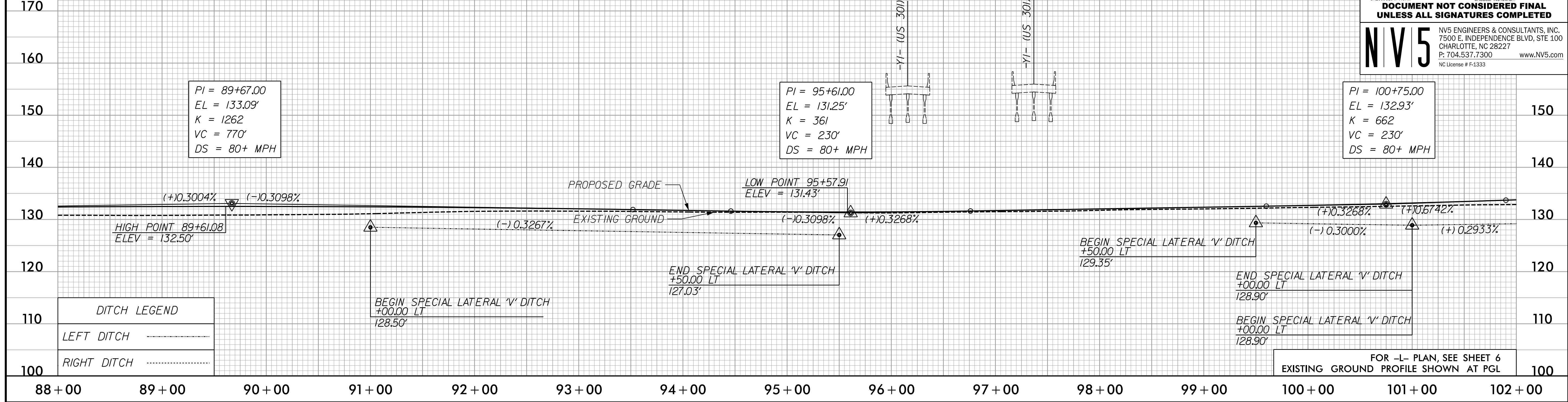


5/28/2022

-L- SB

PROJECT REFERENCE NO. 1-5987A	SHEET NO. 42
ROADWAY DESIGN ENGINEER 5/18/2022 	HYDRAULICS ENGINEER 5/19/2022 
DOCUMENT NOT CONSIDERED FINAL UNLESS ALL SIGNATURES COMPLETED	
 NV5 ENGINEERS & CONSULTANTS, INC. 7500 E. INDEPENDENCE BLVD, STE 100 CHARLOTTE, NC 28227 P: 704.537.7300 www.nv5.com NC License # F-1333	

BM*4
 N: 334,909 E: 1,998,282
 -BLA- STA 94+75.00, 1' LT
 -L- STA 97+26.80, 62.53' RT
 ELEV. = 128.58'



PI = 89+67.00
 EL = 133.09'
 K = 1262
 VC = 770'
 DS = 80+ MPH

PI = 95+61.00
 EL = 131.25'
 K = 361
 VC = 230'
 DS = 80+ MPH

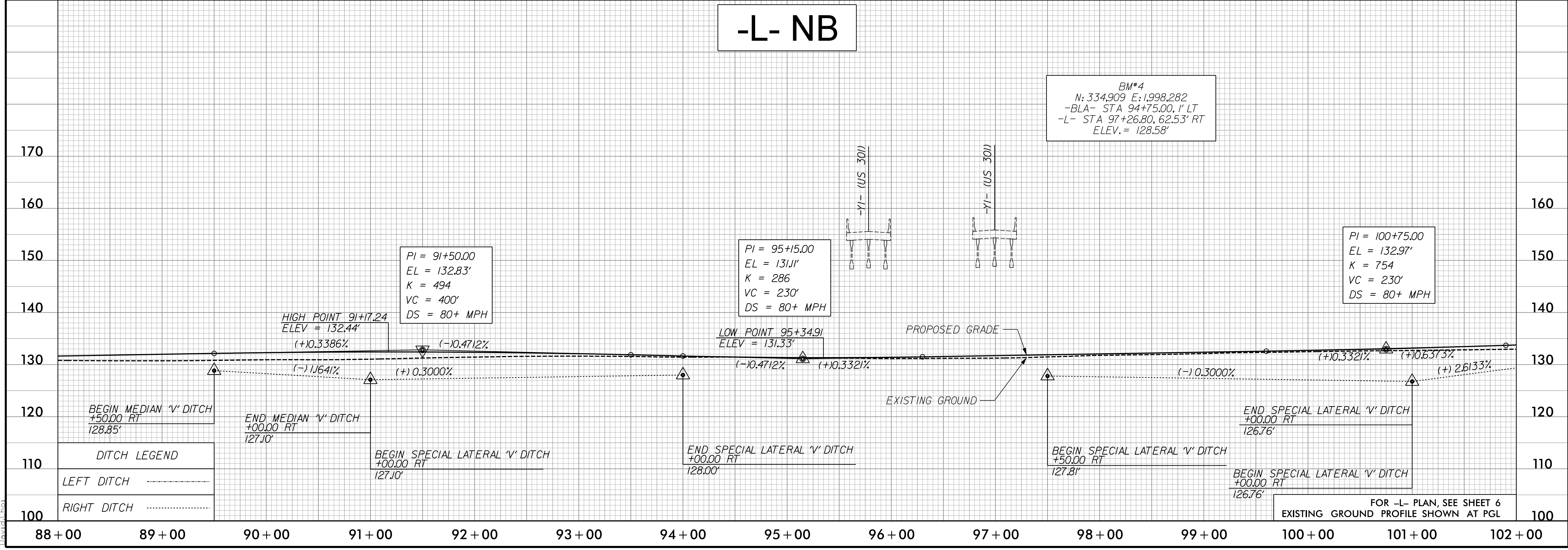
PI = 100+75.00
 EL = 132.93'
 K = 662
 VC = 230'
 DS = 80+ MPH

DITCH LEGEND	
LEFT DITCH	-----
RIGHT DITCH	-----

FOR -L- PLAN, SEE SHEET 6
 EXISTING GROUND PROFILE SHOWN AT PGL

-L- NB

BM*4
 N: 334,909 E: 1,998,282
 -BLA- STA 94+75.00, 1' LT
 -L- STA 97+26.80, 62.53' RT
 ELEV. = 128.58'



PI = 91+50.00
 EL = 132.83'
 K = 494
 VC = 400'
 DS = 80+ MPH

PI = 95+15.00
 EL = 131.11'
 K = 286
 VC = 230'
 DS = 80+ MPH

PI = 100+75.00
 EL = 132.97'
 K = 754
 VC = 230'
 DS = 80+ MPH

DITCH LEGEND	
LEFT DITCH	-----
RIGHT DITCH	-----

FOR -L- PLAN, SEE SHEET 6
 EXISTING GROUND PROFILE SHOWN AT PGL

5/19/2022
P:\Projects\15987A_RDY_PSH_PFL_42.dgn
David Johnson