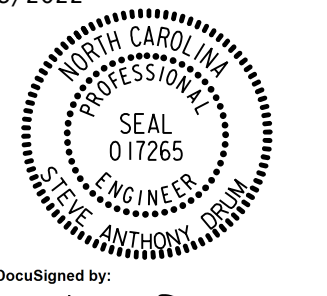


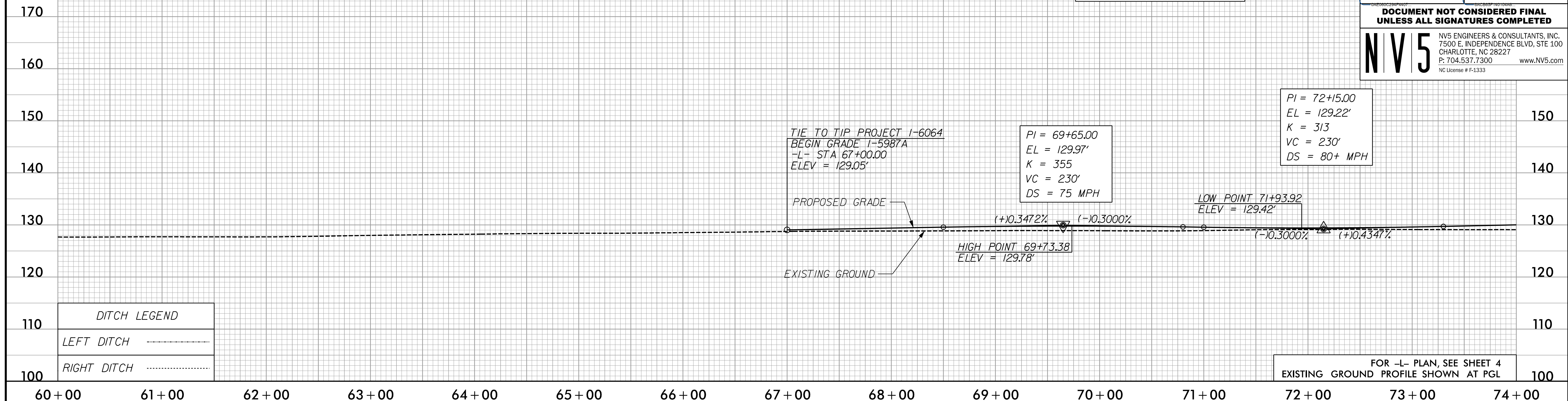


5/28/2022

-L- SB

PROJECT REFERENCE NO. 1-5987A	SHEET NO. 40
ROADWAY DESIGN ENGINEER 5/18/2022	HYDRAULICS ENGINEER 5/19/2022
	
DocuSigned by: Steve Anthony Dean	DocuSigned by: Will Mathershe
DOCUMENT NOT CONSIDERED FINAL UNLESS ALL SIGNATURES COMPLETED	
 NV5 ENGINEERS & CONSULTANTS, INC. 7500 E. INDEPENDENCE BLVD, STE 100 CHARLOTTE, NC 28227 P: 704.537.7300 www.NV5.com NC License # F-1333	

BM*3
 N: 332,322 E: 1,997,688
 -BLA- STA 68+22.00, 9' RT
 -L- STA 70+74.01, 148.83' RT
 ELEV. = 129.50'

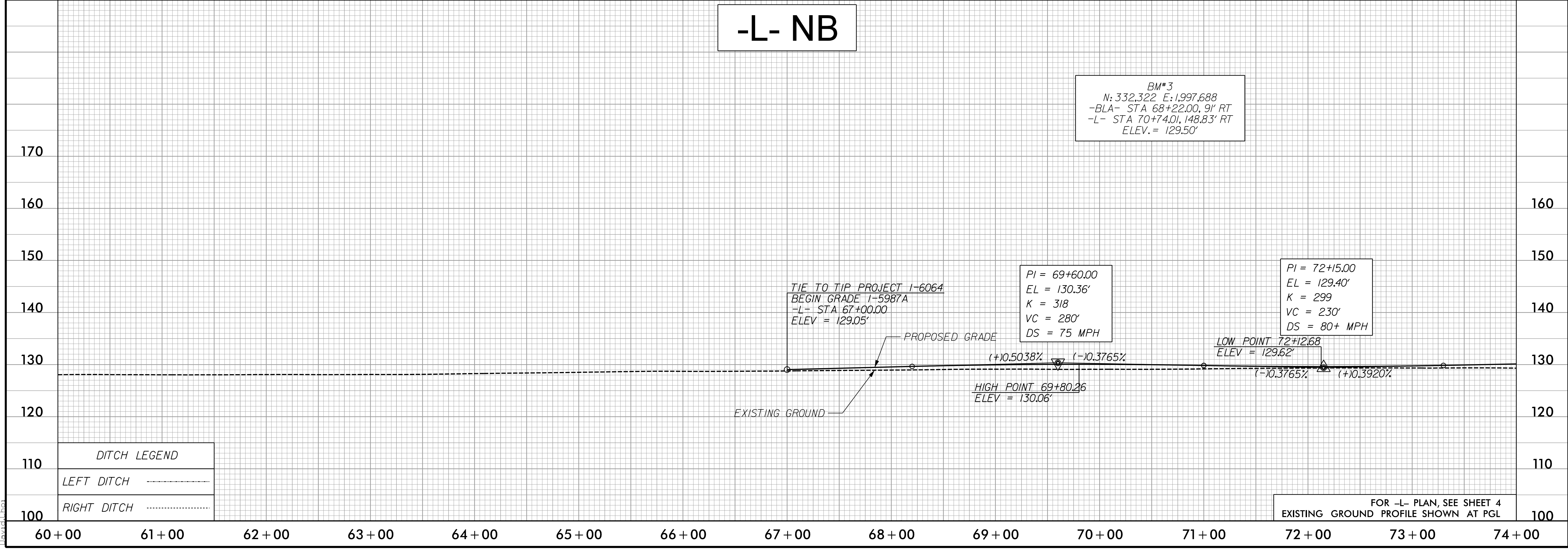


DITCH LEGEND	
LEFT DITCH	-----
RIGHT DITCH	-----

FOR -L- PLAN, SEE SHEET 4
 EXISTING GROUND PROFILE SHOWN AT PGL

-L- NB

BM*3
 N: 332,322 E: 1,997,688
 -BLA- STA 68+22.00, 9' RT
 -L- STA 70+74.01, 148.83' RT
 ELEV. = 129.50'



DITCH LEGEND	
LEFT DITCH	-----
RIGHT DITCH	-----

FOR -L- PLAN, SEE SHEET 4
 EXISTING GROUND PROFILE SHOWN AT PGL

7/10/2022
 P:\Projects\15987A_PSH_PFL_40.dgn
 David