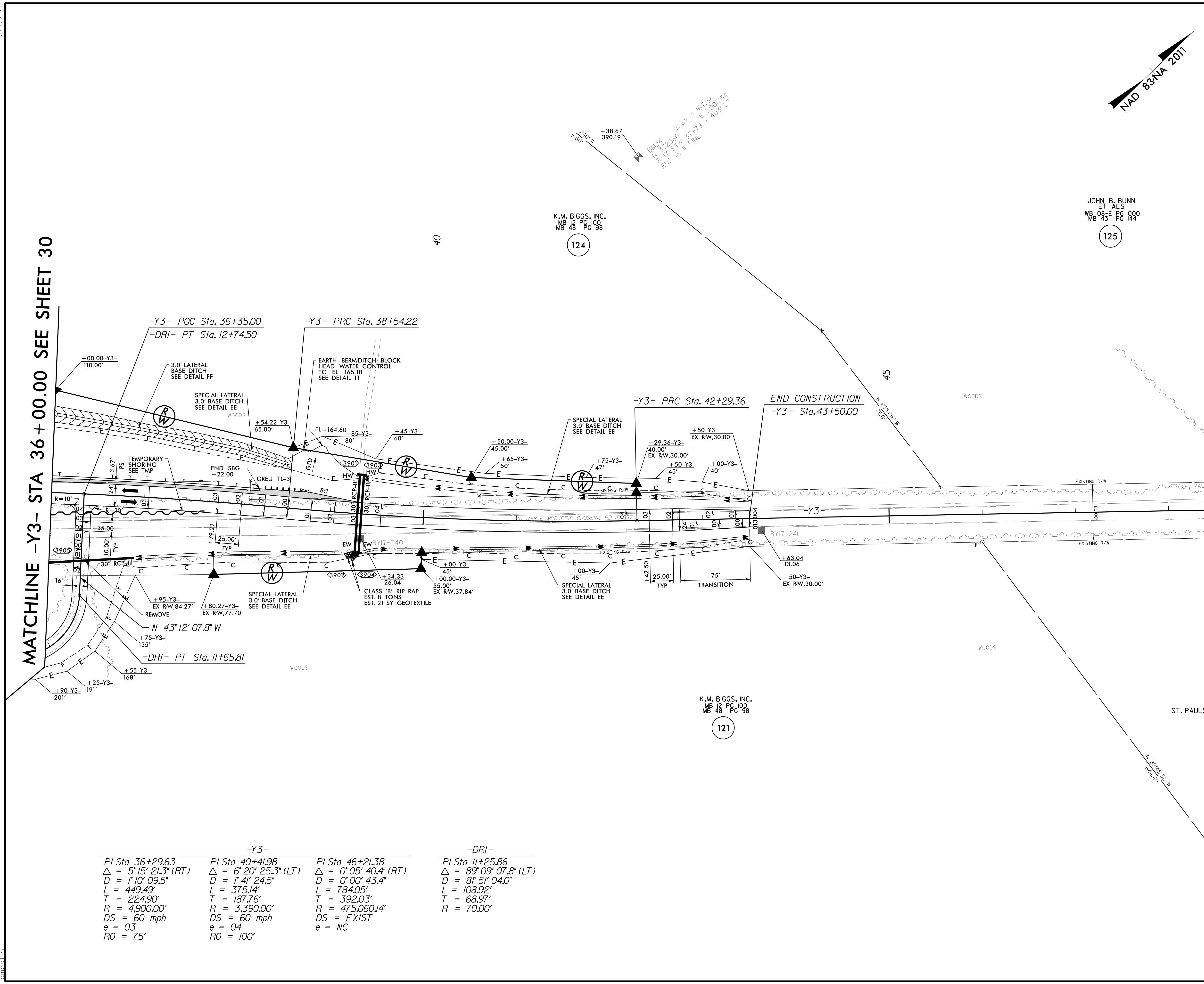


8.17.19
E:\2022\1125\0500\CAD\CAD\15987A\Roadway\Proj\15987A_RDY_PSH_039.dgn

PROJECT REFERENCE NO. 1-5987A		SHEET NO. 39	
RW SHEET NO.			
ROADWAY DESIGN ENGINEER 5/18/2022 Trent Hoffman		HYDRAULICS ENGINEER 5/19/2022 Linda Johns	
DOCUMENT NOT CONSIDERED FINAL UNLESS ALL SIGNATURES COMPLETED			
		<small>4100 FALLS OF NEUSE ROAD, SUITE 300 RALEIGH, NORTH CAROLINA 27609 (919) 781-4626 VOICE (919) 781-4869 FAX NC License No.: F-0105</small>	
		<small>1011 SCHAUB DRIVE, SUITE 100 RALEIGH, NC 27606 (919) 851-6606 FIRM PE NUMBER : P-0671</small>	



MATCHLINE -Y3- STA 36 + 00.00 SEE SHEET 30

-Y3-			-DRI-		
PI Sta 36+29.63	PI Sta 40+41.98	PI Sta 46+21.38	PI Sta 11+25.86		
$\Delta = 5' 15'' 21.3''$ (RT)	$\Delta = 6' 20'' 25.3''$ (LT)	$\Delta = 0' 05'' 40.4''$ (RT)	$\Delta = 89' 09'' 07.8''$ (LT)		
D = 1' 10'' 09.5''	D = 1' 41'' 24.5''	D = 0' 00'' 43.4''	D = 81' 51'' 04.0''		
L = 449.49'	L = 375.14'	L = 784.05'	L = 108.92'		
T = 224.90'	T = 187.76'	T = 392.03'	T = 68.97'		
R = 4,900.00'	R = 3,390.00'	R = 475,060.14'	R = 70.00'		
DS = 60 mph	DS = 60 mph	DS = EXIST			
e = 0.3	e = 0.4	e = NC			
RO = 75'	RO = 100'				

FOR -Y3- PROFILE SEE SHEETS 89 & 90
FOR -DRI- PROFILE SEE SHEET 90
FOR DITCH DETAILS SEE SHEET 2D-3