

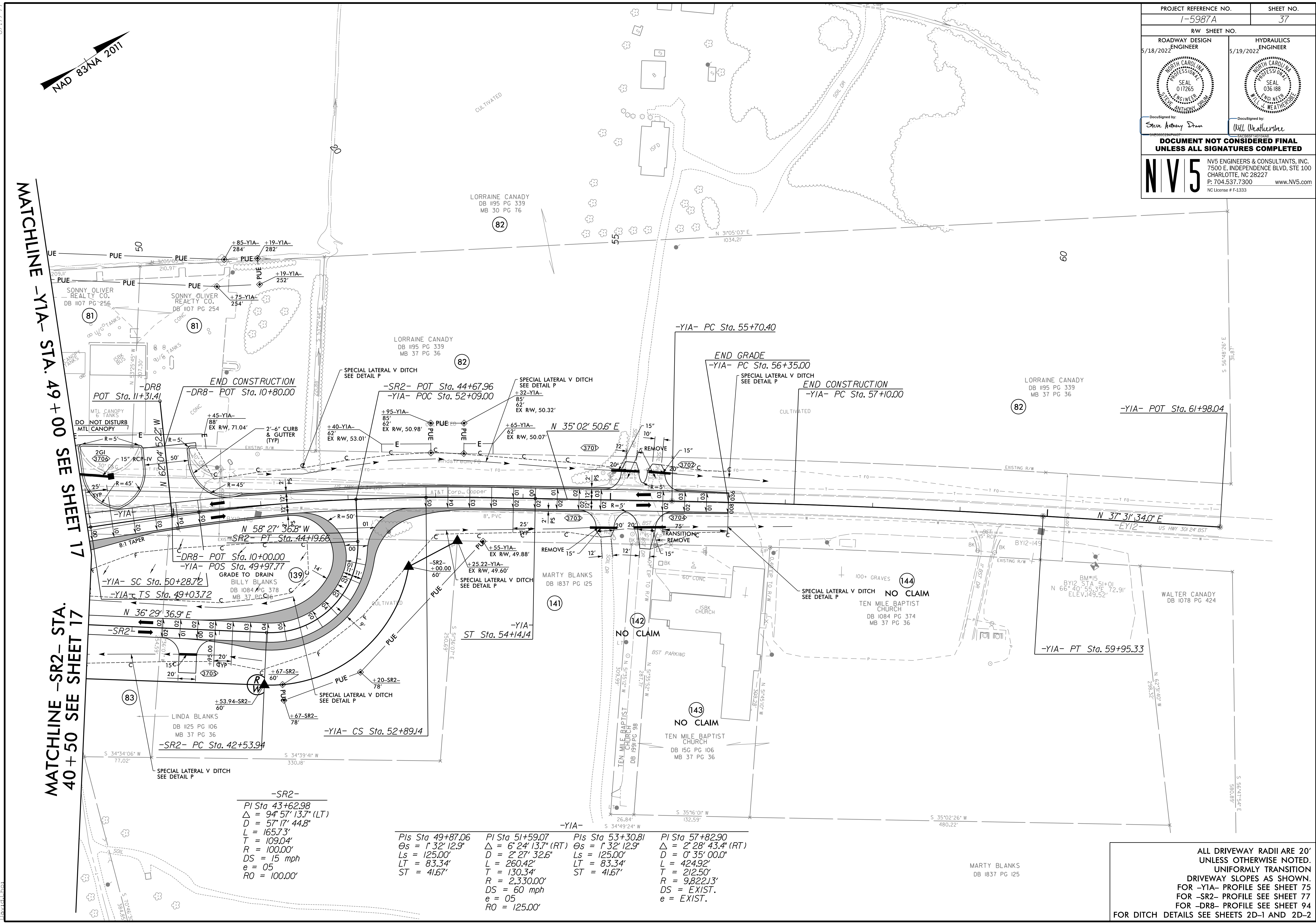
8.17.7.99



PROJECT REFERENCE NO. 1-5987A		SHEET NO. 37	
RW SHEET NO.			
ROADWAY DESIGN ENGINEER 5/18/2022		HYDRAULICS ENGINEER 5/19/2022	
Designed by Steve Anthony Dren		Designed by Will Mathershe	
DOCUMENT NOT CONSIDERED FINAL UNLESS ALL SIGNATURES COMPLETED			
NV5		NV5 ENGINEERS & CONSULTANTS, INC. 7500 E. INDEPENDENCE BLVD, STE 100 CHARLOTTE, NC 28227 P: 704.537.7300 www.NV5.com NC License # F-1333	

MATCHLINE -YIA- STA. 49 + 00 SEE SHEET 17

MATCHLINE -SR2- STA. 40 + 50 SEE SHEET 17



-SR2-
 PI Sta 43+62.98
 $\Delta = 94' 57'' 13.7''$ (LT)
 $D = 57' 17'' 44.8''$
 $L = 165.73'$
 $T = 109.04'$
 $R = 100.00'$
 $DS = 15$ mph
 $e = 05$
 $RO = 100.00'$

-YIA-
 PIs Sta 49+87.06 PI Sta 51+59.07 PIs Sta 53+30.81 PI Sta 57+82.90
 $\Theta_s = 1' 32'' 12.9''$ $\Delta = 6' 24'' 13.7''$ (RT) $\Theta_s = 1' 32'' 12.9''$ $\Delta = 2' 28'' 43.4''$ (RT)
 $L_s = 125.00'$ $D = 2' 27'' 32.6''$ $L_s = 125.00'$ $D = 0' 35'' 00.0''$
 $LT = 83.34'$ $L = 260.42'$ $LT = 83.34'$ $L = 424.92'$
 $ST = 41.67'$ $T = 130.34'$ $ST = 41.67'$ $T = 212.50'$
 $R = 2,330.00'$ $R = 9,822.13'$
 $DS = 60$ mph $DS = EXIST.$
 $e = 05$ $e = EXIST.$
 $RO = 125.00'$

ALL DRIVEWAY RADII ARE 20'
UNLESS OTHERWISE NOTED.
UNIFORMLY TRANSITION
DRIVEWAY SLOPES AS SHOWN.
FOR -YIA- PROFILE SEE SHEET 75
FOR -SR2- PROFILE SEE SHEET 77
FOR -DR8- PROFILE SEE SHEET 94
FOR DITCH DETAILS SEE SHEETS 2D-1 AND 2D-2

3/30/2022
 R:\Projects\15987A_Roadway\15987A_RDY_PSH_037.dgn
 David