

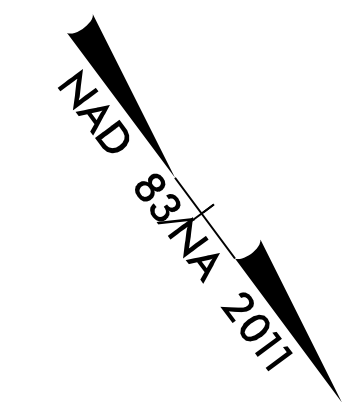


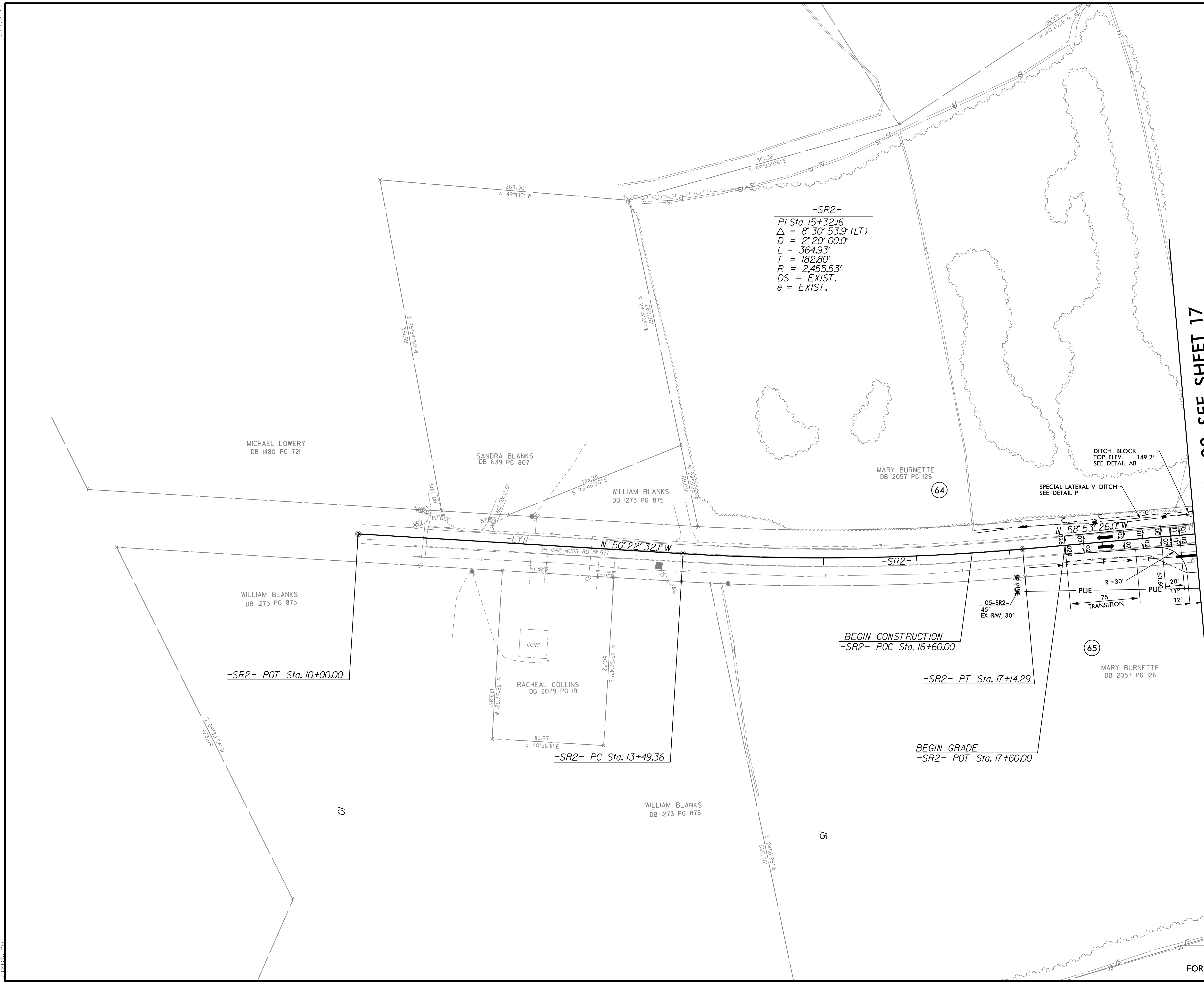
8/17/99

PROJECT REFERENCE NO.		SHEET NO.	
1-5987A		36	
RW SHEET NO.			
ROADWAY DESIGN ENGINEER 5/18/2022		HYDRAULICS ENGINEER 5/19/2022	
			
DocuSigned by: Steve Anthony Dean		DocuSigned by: Will Weathersee	
DOCUMENT NOT CONSIDERED FINAL UNLESS ALL SIGNATURES COMPLETED			
NV5		NV5 ENGINEERS & CONSULTANTS, INC. 7500 E. INDEPENDENCE BLVD, STE 100 CHARLOTTE, NC 28227 P: 704.537.7300 www.NV5.com NC License # F-1333	

-SR2-
 PI Sta 15+32.16
 $\Delta = 8^{\circ} 30' 53.9" (LT)$
 $D = 2^{\circ} 20' 00.0"$
 $L = 364.93'$
 $T = 182.80'$
 $R = 2,455.53'$
 $DS = EXIST.$
 $e = EXIST.$



MATCHLINE -SR2- STA. 19 + 00 SEE SHEET 17



3/30/2022
 R:\Projects\15987A_R0Y_PSH_036.dgn
 David

FOR -SR2- PROFILE SEE SHEET 76
 FOR DITCH DETAILS SEE SHEETS 2D-1 AND 2D-2