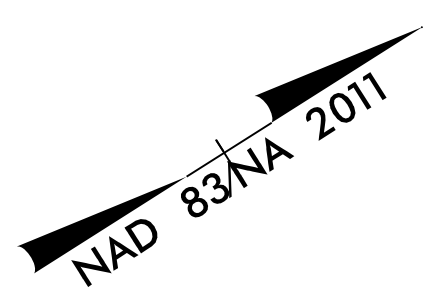
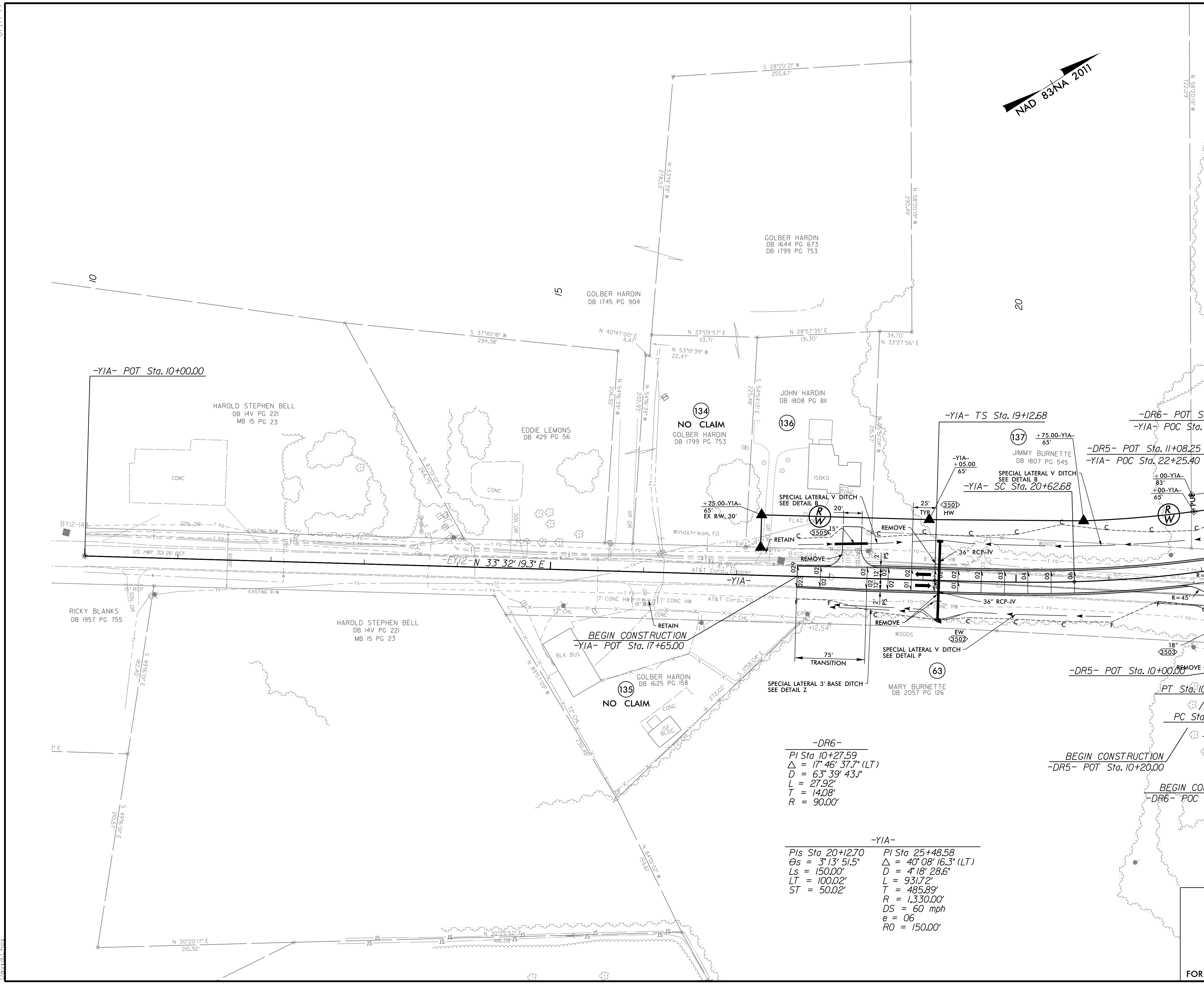


8/17/99

PROJECT REFERENCE NO. 1-5987A		SHEET NO. 35	
RW SHEET NO.			
ROADWAY DESIGN ENGINEER 5/18/2022		HYDRAULICS ENGINEER 5/19/2022	
DocuSigned by: Steve Anthony Dean Will Weatherbee			
DOCUMENT NOT CONSIDERED FINAL UNLESS ALL SIGNATURES COMPLETED			
NV5		NV5 ENGINEERS & CONSULTANTS, INC. 7500 E. INDEPENDENCE BLVD, STE 100 CHARLOTTE, NC 28227 P: 704.537.7300 www.nv5.com NC License # F-1333	



-DR6-
 PI Sta 10+27.59
 $\Delta = 17^{\circ} 46' 37.7''$ (LT)
 $D = 63^{\circ} 39' 43.1''$
 $L = 27.92'$
 $T = 14.08'$
 $R = 90.00'$

-YIA-
 PIs Sta 20+12.70 PI Sta 25+48.58
 $\Delta s = 3^{\circ} 13' 51.5''$ $\Delta = 40^{\circ} 08' 16.3''$ (LT)
 $Ls = 150.00'$ $D = 4^{\circ} 18' 28.6''$
 $LT = 100.02'$ $L = 931.72'$
 $ST = 50.02'$ $T = 485.89'$
 $R = 1,330.00'$
 $DS = 60$ mph
 $e = 06$
 $RO = 150.00'$

ALL DRIVEWAY RADII ARE 20'
 UNLESS OTHERWISE NOTED.
 UNIFORMLY TRANSITION
 DRIVEWAY SLOPES AS SHOWN.
 PROPOSED PAVEMENT REMOVAL
 FOR -YIA- PROFILE SEE SHEET 74
 FOR -DR5- PROFILE SEE SHEET 92
 FOR -DR6- PROFILE SEE SHEET 93
 FOR DITCH DETAILS SEE SHEETS 2D-1 AND 2D-2

3/30/2022
 R:\Projects\15987A_RDY_PSH_035.dgn
 David