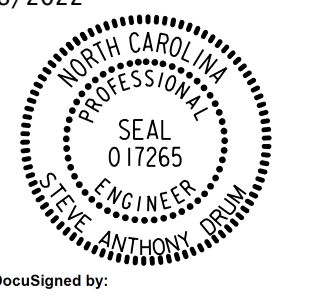

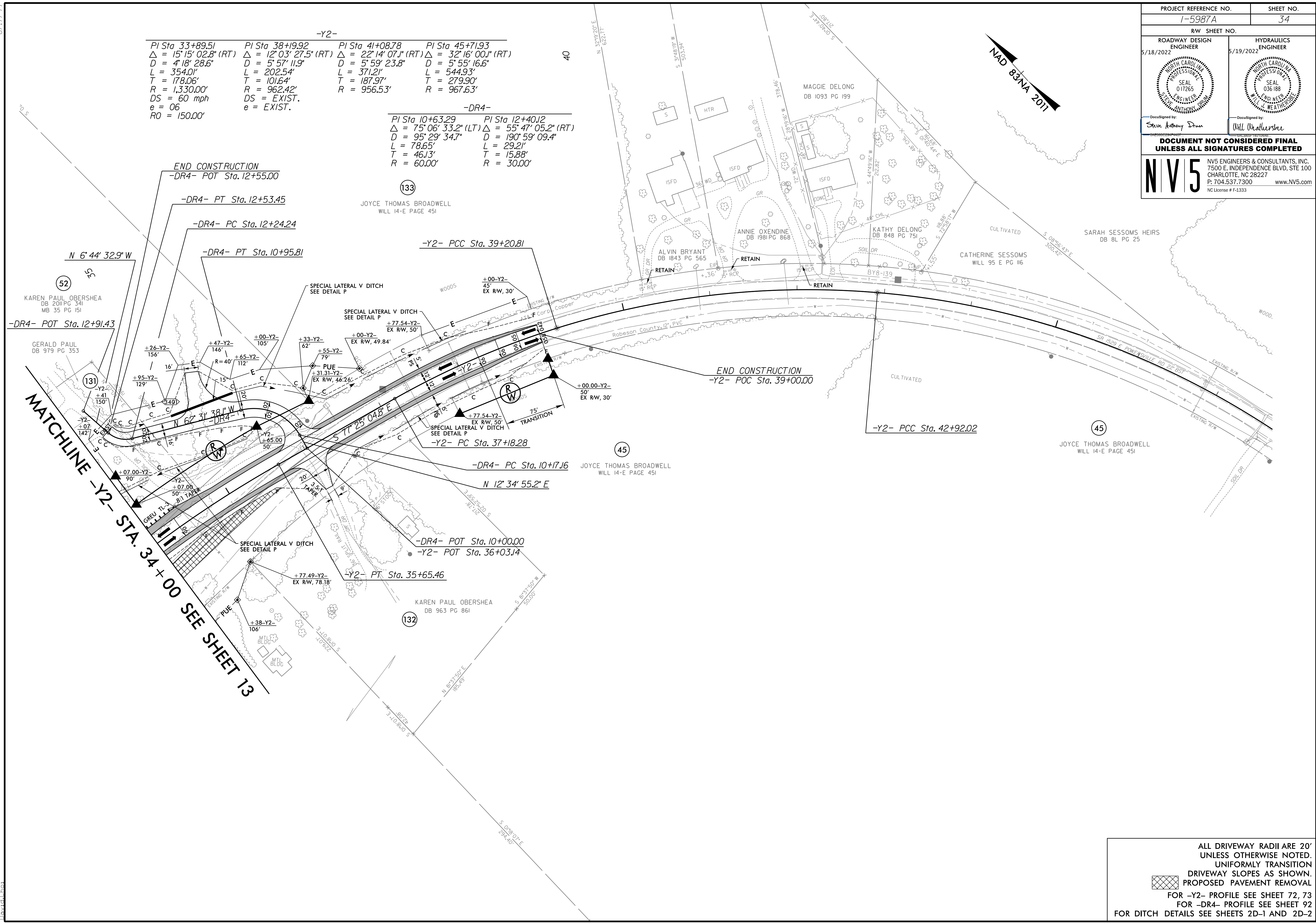


PROJECT REFERENCE NO. 1-5987A		SHEET NO. 34	
RW SHEET NO.			
ROADWAY DESIGN ENGINEER 5/18/2022		HYDRAULICS ENGINEER 5/19/2022	
			
Designed by Steve Anthony Dean		Designed by Will Weatherman	
<b>DOCUMENT NOT CONSIDERED FINAL UNLESS ALL SIGNATURES COMPLETED</b>			
NV5		NV5 ENGINEERS & CONSULTANTS, INC. 7500 E. INDEPENDENCE BLVD, STE 100 CHARLOTTE, NC 28227 P: 704.537.7300 www.NV5.com NC License # F-1333	



3/30/2022  
R:\Projects\15987A\_R0Y\_PSH\_034.dgn  
David

ALL DRIVEWAY RADII ARE 20'  
UNLESS OTHERWISE NOTED.  
UNIFORMLY TRANSITION  
DRIVEWAY SLOPES AS SHOWN.  
PROPOSED PAVEMENT REMOVAL

FOR -Y2- PROFILE SEE SHEET 72, 73  
FOR -DR4- PROFILE SEE SHEET 92  
FOR DITCH DETAILS SEE SHEETS 2D-1 AND 2D-2