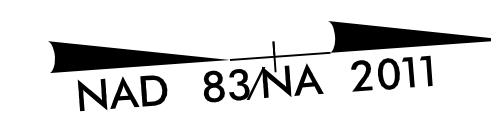


8.17.2022

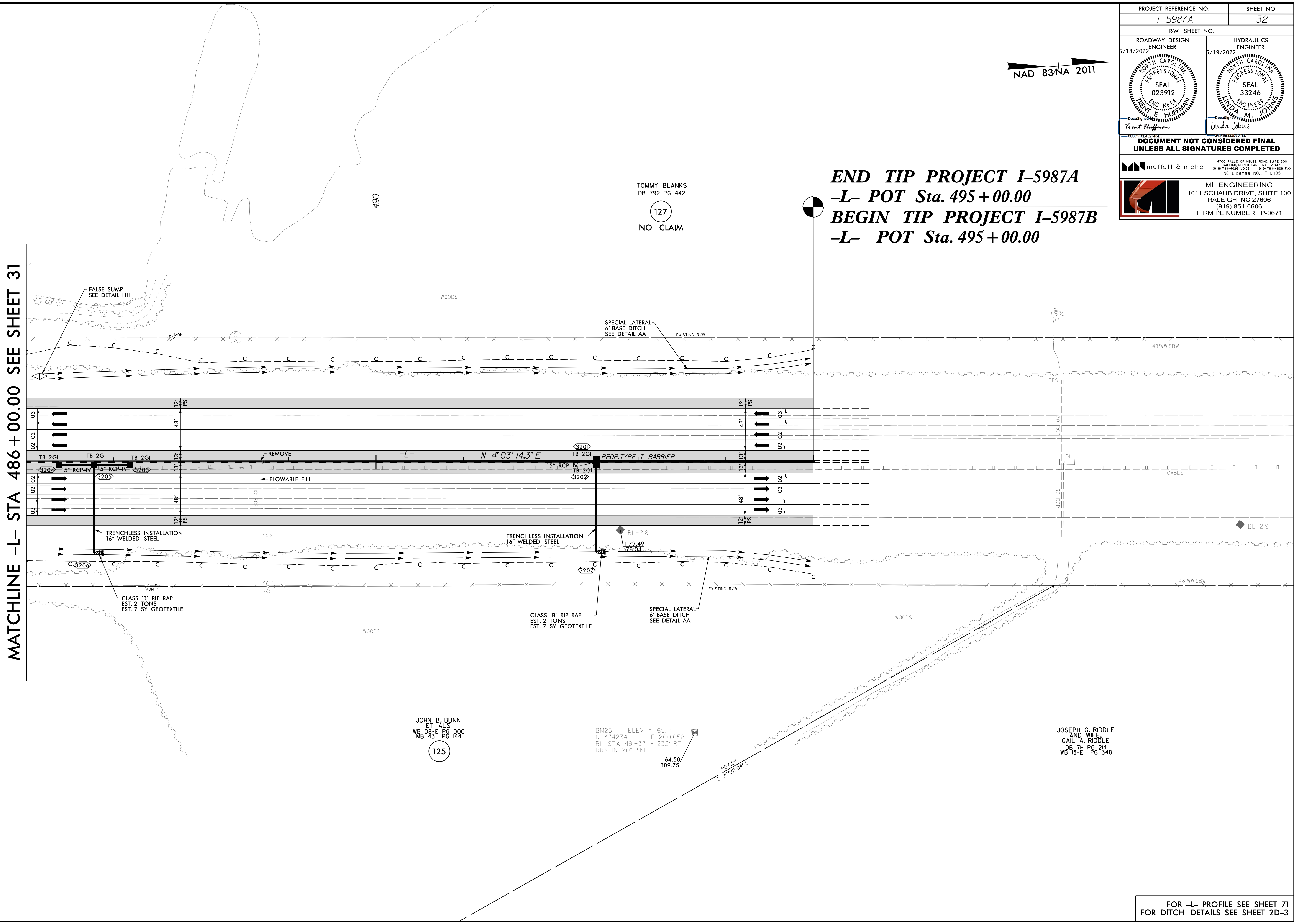
PROJECT REFERENCE NO. I-5987A	SHEET NO. 32
RW SHEET NO.	
ROADWAY DESIGN ENGINEER 5/18/2022 TRENT HOFFMAN	HYDRAULICS ENGINEER 5/19/2022 LINDA JOHNS
DOCUMENT NOT CONSIDERED FINAL UNLESS ALL SIGNATURES COMPLETED	
4100 FALLS OF NEUSE ROAD, SUITE 300 RALEIGH, NORTH CAROLINA 27609 (919) 781-4626 VOICE (919) 781-4869 FAX NC License No.: F-0105	
MI ENGINEERING 1011 SCHAUB DRIVE, SUITE 100 RALEIGH, NC 27606 (919) 851-6606 FIRM PE NUMBER : P-0671	



END TIP PROJECT I-5987A
-L- POT Sta. 495 + 00.00
BEGIN TIP PROJECT I-5987B
-L- POT Sta. 495 + 00.00

TOMMY BLANKS
 DB 792 PG 442
 (127)
 NO CLAIM

MATCHLINE -L- STA 486 + 00.00 SEE SHEET 31



JOHN B. BUNN
 ET ALS
 WB 08-E PG 000
 MB 43 PG 144
 (125)

BM25 ELEV = 165.11'
 N 374234 E 2001658
 BL STA 491+37 - 232' RT
 RRS IN 20' PINE
 +64.50
 309.75

JOSEPH G. RIDDLE
 AND WIFE
 GAIL A. RIDDLE
 DB 7H PG 214
 WB 13-E PG 348

FOR -L- PROFILE SEE SHEET 71
 FOR DITCH DETAILS SEE SHEET 2D-3

5/24/2022 11:25:05.00 CAD:\15987A\Roadway\Proj\I5987A_RDY_PSH_032.dgn
 11/25/2022 11:25:05.00 CAD:\15987A\Roadway\Proj\I5987A_RDY_PSH_032.dgn