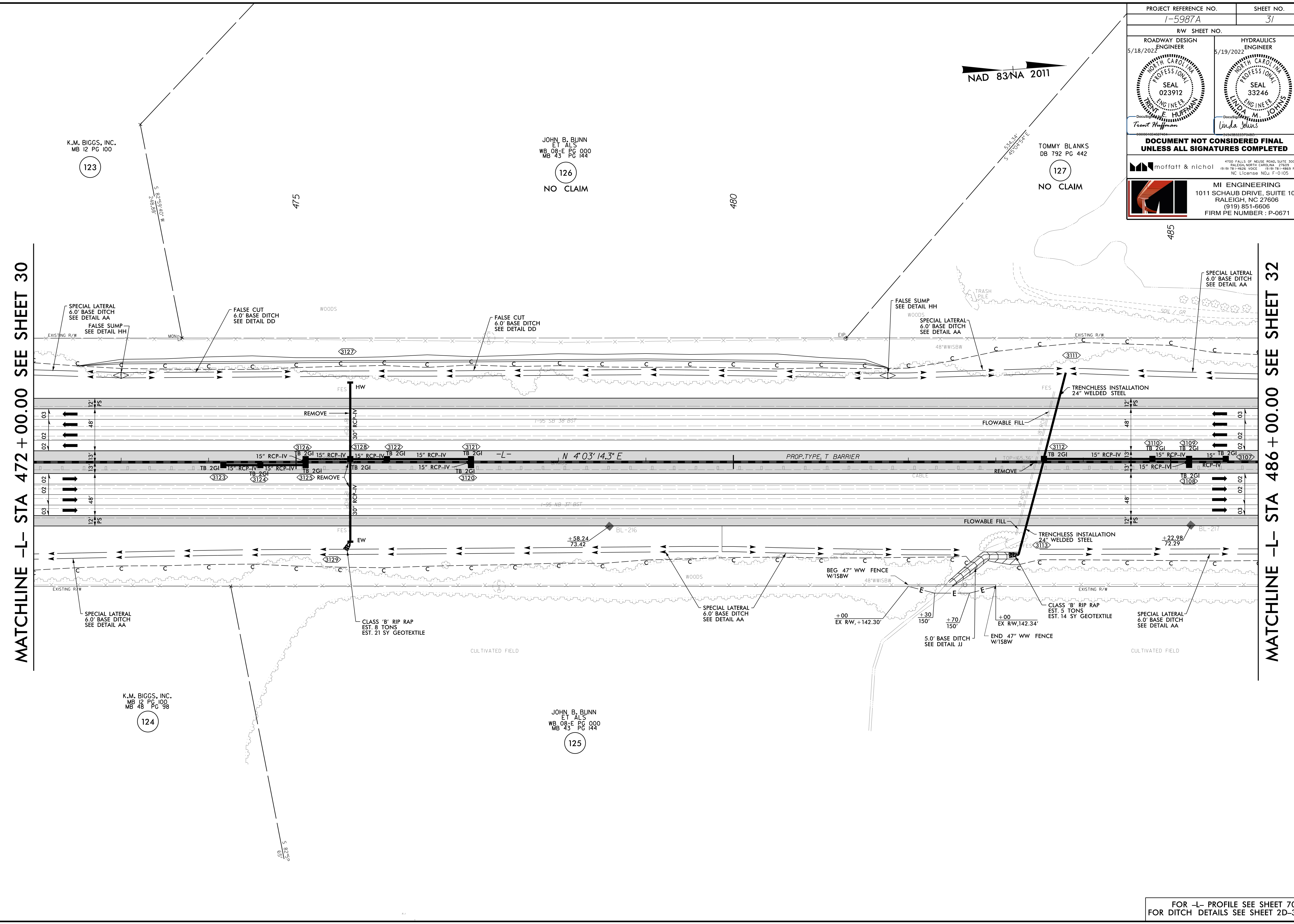


8.17.19

PROJECT REFERENCE NO. 1-5987A		SHEET NO. 31	
RW SHEET NO.		HYDRAULICS SHEET NO.	
ROADWAY DESIGN ENGINEER 5/18/2022		HYDRAULICS ENGINEER 5/19/2022	
<p>DOCUMENT NOT CONSIDERED FINAL UNLESS ALL SIGNATURES COMPLETED</p>			
		<p>4100 FALLS OF NEUSE ROAD, SUITE 300 RALEIGH, NORTH CAROLINA 27619 (919) 781-4626 VOICE (919) 781-4869 FAX NC License No.: F-0105</p>	
		<p>MI ENGINEERING 1011 SCHAUB DRIVE, SUITE 100 RALEIGH, NC 27606 (919) 851-6606 FIRM PE NUMBER : P-0671</p>	

NAD 83/NA 2011



MATCHLINE -L- STA 472 + 00.00 SEE SHEET 30

MATCHLINE -L- STA 486 + 00.00 SEE SHEET 32

K.M. BIGGS, INC.
MB 12 PG 100
123

JOHN B. BUNN
ET ALS
WB 08-E PG 000
MB 43 PG 144
126
NO CLAIM

TOMMY BLANKS
DB 792 PG 442
127
NO CLAIM

K.M. BIGGS, INC.
MB 12 PG 100
MB 48 PG 98
124

JOHN B. BUNN
ET ALS
WB 08-E PG 000
MB 43 PG 144
125

5/2/2022
D:\1125\0500\CAD\15987A\Roadway\Proj\15987A_RDY_PSH_031.dgn

FOR -L- PROFILE SEE SHEET 70
FOR DITCH DETAILS SEE SHEET 2D-3