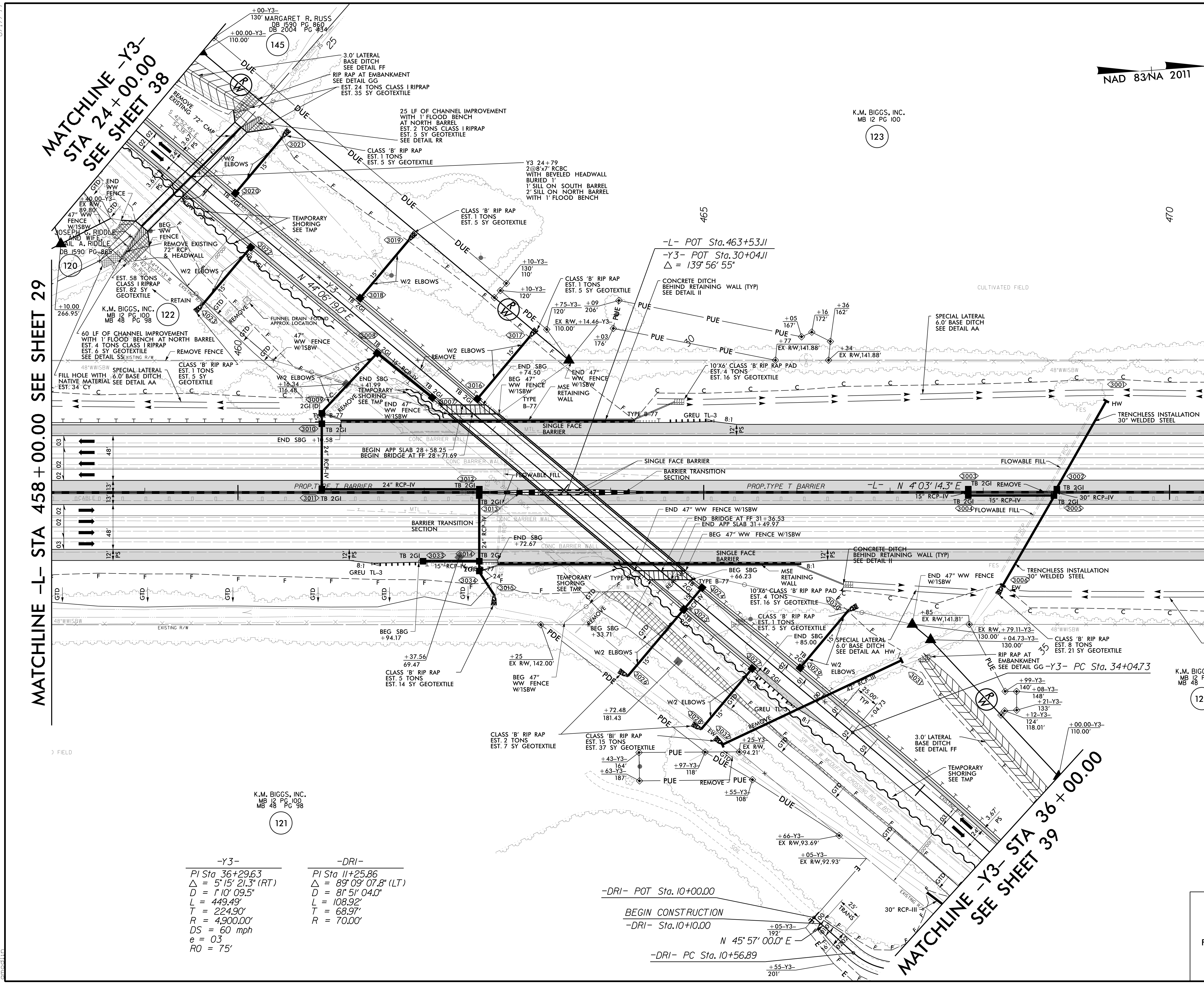


PROJECT REFERENCE NO. 1-5987A	SHEET NO. 30
RW SHEET NO.	
ROADWAY DESIGN 5/18/2022 ENGINEER	HYDRAULICS 5/19/2022 ENGINEER
DOCUMENT NOT CONSIDERED FINAL UNLESS ALL SIGNATURES COMPLETED	
4100 FALLS OF NEUSE ROAD, SUITE 300 WAKEFORD, NORTH CAROLINA 27889 (919) 781-4626 VOICE (919) 781-4869 FAX NC License No. F-0105	
MI ENGINEERING 1011 SCHAUB DRIVE, SUITE 100 RALEIGH, NC 27606 (919) 851-6606 FIRM PE NUMBER : P-0671	



NAD 83/NA 2011

K.M. BIGGS, INC.
MB 12 PG 100

123

MATCHLINE -L- STA 458 + 00.00 SEE SHEET 29

MATCHLINE -L- STA 472 + 00.00 SEE SHEET 31

MATCHLINE -Y3-
STA 24 + 00.00
SEE SHEET 38

MATCHLINE -Y3- STA 36 + 00.00
SEE SHEET 39

-Y3-	-DRI-
PI Sta. 36+29.63	PI Sta. 11+25.86
$\Delta = 5^{\circ}15'21.3''$ (RT)	$\Delta = 89^{\circ}09'07.8''$ (LT)
D = 1'10'09.5"	D = 81'51'04.0"
L = 449.49'	L = 108.92'
T = 224.90'	T = 68.97'
R = 4,900.00'	R = 70.00'
DS = 60 mph	
e = 0.3	
RO = 75'	

-DRI- POT Sta. 10+00.00
 BEGIN CONSTRUCTION
 -DRI- Sta. 10+10.00
 N 45° 57' 00.0" E
 -DRI- PC Sta. 10+56.89

PROPOSED PAVEMENT REMOVAL
 FOR -L- PROFILE SEE SHEET 69
 FOR -Y3- PROFILE SEE SHEET 89
 FOR -DRI- PROFILE SEE SHEET 90
 FOR STRUCTURE PLANS SEE S3-1 THRU S3-29
 FOR WALL PLANS SEE W-1 THRU W-11
 FOR CULVERT PLANS SEE C14-1 THRU C14-10
 FOR DITCH DETAILS SEE SHEET 2D-3

D:\6161125\0500_CAD\15987A\Roadway\Proj\15987A_RDY_PSH_030.dgn