

8/17/99

PROJECT REFERENCE NO. 1-5987A		SHEET NO. 28	
RW SHEET NO.			
ROADWAY DESIGN ENGINEER 5/18/2022 TERRY E. HUFFMAN		HYDRAULICS ENGINEER 5/19/2022 LINDA JOHNS	
DOCUMENT NOT CONSIDERED FINAL UNLESS ALL SIGNATURES COMPLETED			
		<small>4100 FALLS OF NEUSE ROAD, SUITE 300 RALEIGH, NORTH CAROLINA 27609 (919) 781-4626 VOICE (919) 781-4869 FAX NC License No.: F-0105</small>	
		MI ENGINEERING 1011 SCHAUB DRIVE, SUITE 100 RALEIGH, NC 27606 (919) 851-6606 FIRM PE NUMBER : P-0671	

-L-
 PI Sta 430+68.94
 $\Delta = 3^{\circ} 33' 35.7''$ (RT)
 $D = 0^{\circ} 12' 03.7''$
 $L = 1,770.78'$
 $T = 885.67'$
 $R = 28,500.00'$
 $DS = 75$ mph
 $e = NC$

NAD 83/NA 2011

PALMETTO PROPERTIES, INC
DB 910 PG 351

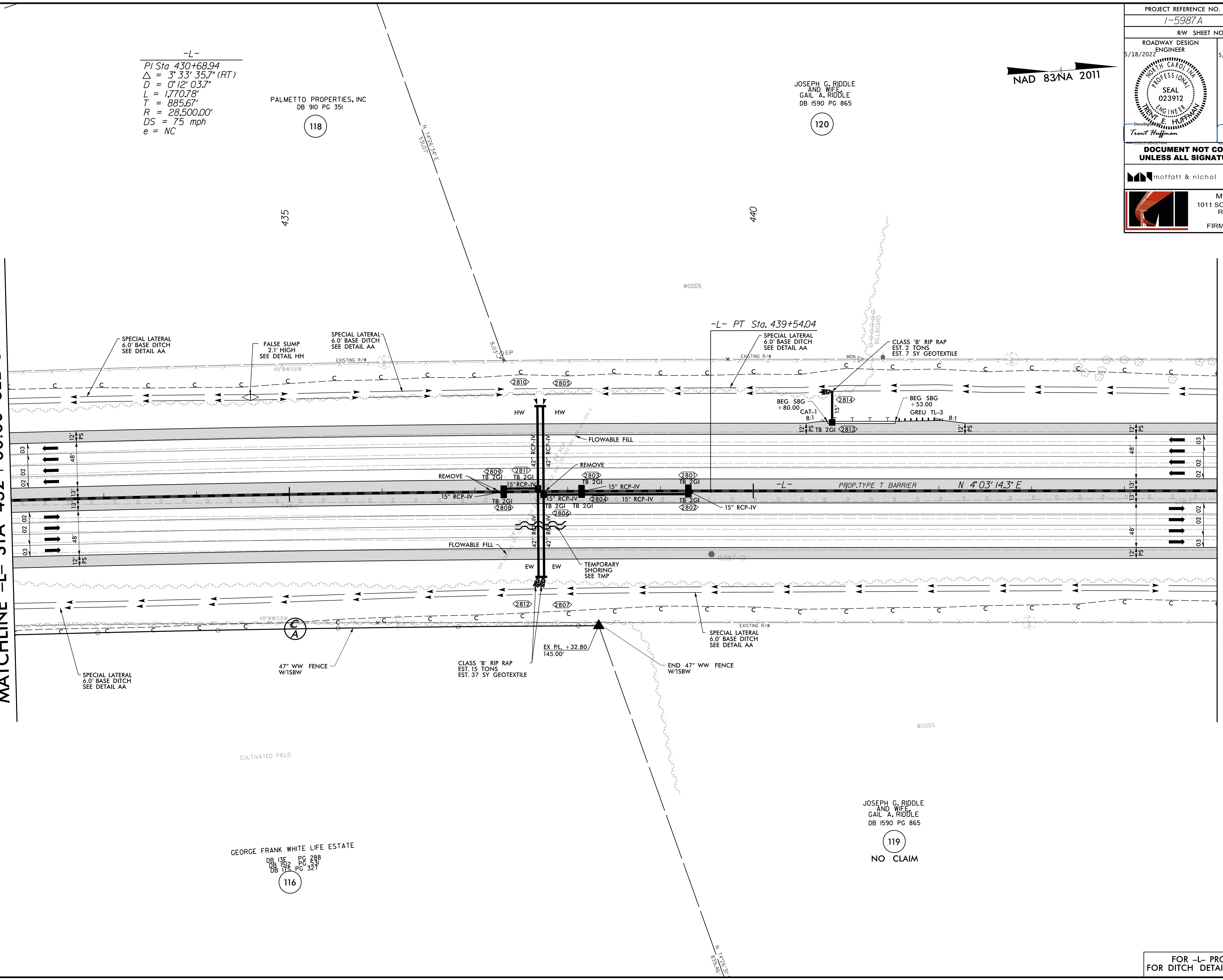
JOSEPH G. RIDDLE
AND WIFE
GAIL A. RIDDLE
DB 1590 PG 865

GEORGE FRANK WHITE LIFE ESTATE
DB 136 PG 288
DB 152 PG 433
DB 175 PG 324

JOSEPH G. RIDDLE
AND WIFE
GAIL A. RIDDLE
DB 1590 PG 865

MATCHLINE -L- STA 432 + 00.00 SEE SHEET 27

MATCHLINE -L- STA 445 + 00.00 SEE SHEET 29



FOR -L- PROFILE SEE SHEET 67
FOR DITCH DETAILS SEE SHEET 2D-3