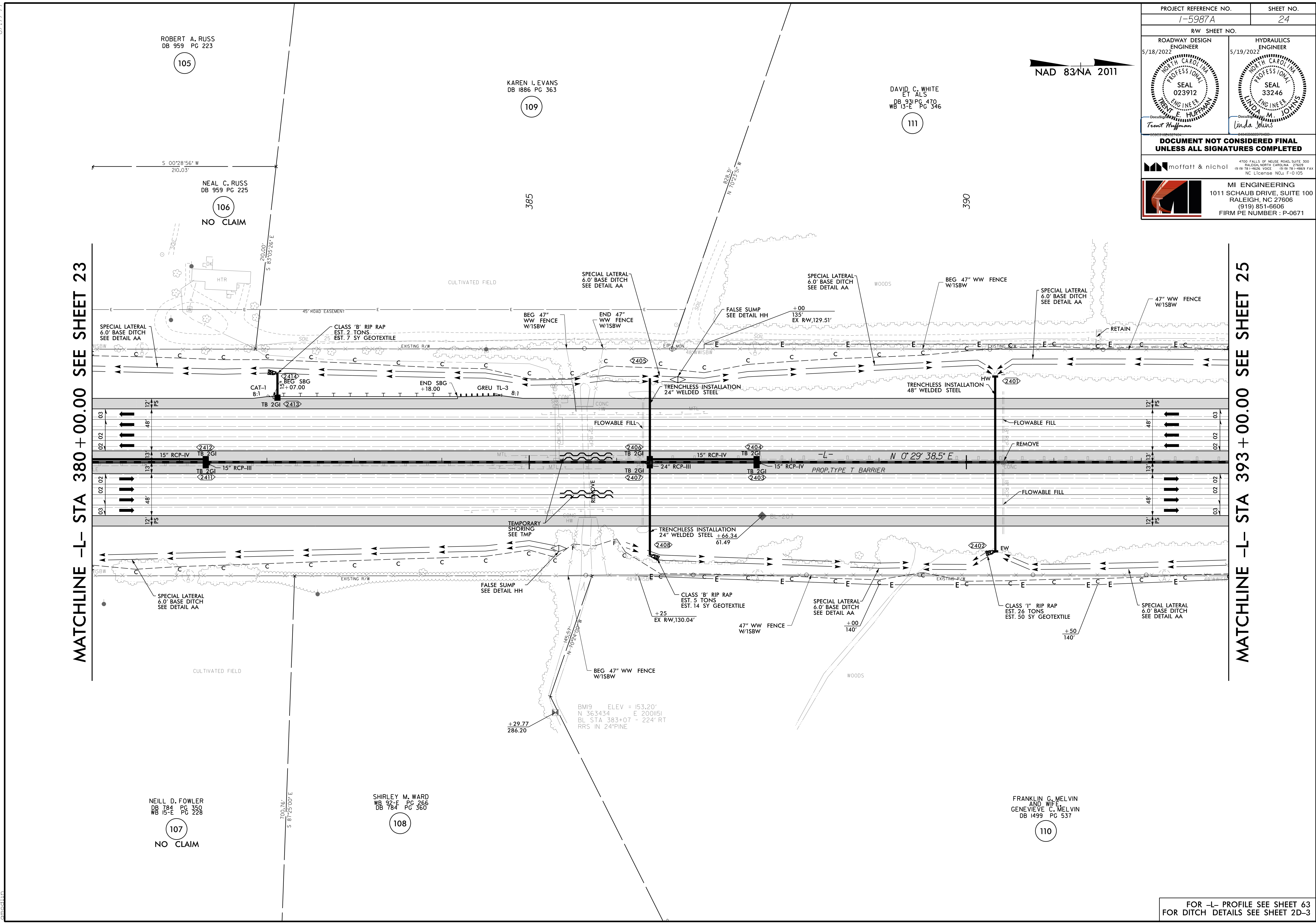


PROJECT REFERENCE NO. 1-5987A	SHEET NO. 24
RW SHEET NO.	
ROADWAY DESIGN ENGINEER 5/18/2022 NEAL C. RUSS DB 959 PG 223	HYDRAULICS ENGINEER 5/19/2022 DAVID C. WHITE ET ALS DB 931 PG 470 WB 13-E PG 346
DOCUMENT NOT CONSIDERED FINAL UNLESS ALL SIGNATURES COMPLETED	
4700 FALLS OF NEUSE ROAD, SUITE 300 RALEIGH, NORTH CAROLINA 27609 (919) 781-4626 VOICE (919) 781-4869 FAX NC License No.: F-0105	
MI ENGINEERING 1011 SCHAUB DRIVE, SUITE 100 RALEIGH, NC 27606 (919) 851-6606 FIRM PE NUMBER : P-0671	

MATCHLINE -L- STA 380 + 00.00 SEE SHEET 23

MATCHLINE -L- STA 393 + 00.00 SEE SHEET 25



8.17.17.99
5/2/2022
D:\146\1125\0500\CAD\15987A\Roadway\Proj\15987A_RDY_PSH_024.dgn

ROBERT A. RUSS
DB 959 PG 223

105

NEAL C. RUSS
DB 959 PG 225

106
NO CLAIM

KAREN I. EVANS
DB 886 PG 363

109

DAVID C. WHITE
ET ALS
DB 931 PG 470
WB 13-E PG 346

111

NAD 83/NA 2011

NEILL D. FOWLER
DB 784 PG 350
WB 15-E PG 228

107
NO CLAIM

SHIRLEY M. WARD
DB 92-E PG 266
DB 784 PG 360

108

FRANKLIN G. MELVIN
AND WIFE
GENEVIEVE C. MELVIN
DB 1499 PG 537

110

FOR -L- PROFILE SEE SHEET 63
FOR DITCH DETAILS SEE SHEET 2D-3