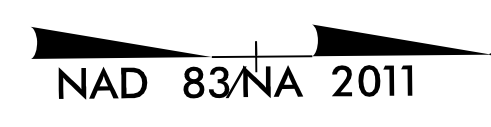


8/17/99

PROJECT REFERENCE NO. 1-5987A		SHEET NO. 23	
RW SHEET NO.			
ROADWAY DESIGN 5/18/2022 ENGINEER		HYDRAULICS 5/19/2022 ENGINEER	
DOCUMENT NOT CONSIDERED FINAL UNLESS ALL SIGNATURES COMPLETED			
		<small>4700 FALLS OF NEUSE ROAD, SUITE 300 RALEIGH, NORTH CAROLINA 27609 (919) 781-4626 VOICE (919) 781-4669 FAX NC License No.: F-0 105</small>	
		<small>1011 SCHAUB DRIVE, SUITE 100 RALEIGH, NC 27606 (919) 851-6606 FIRM PE NUMBER : P-0671</small>	



BRENDA B. SMITH  
DB 2146 PG 260

104

ROBERT A. RUSS  
DB 959 PG 223

105

PATRICIA R THOMPSON  
AND SPOUSE  
DAVID M. THOMPSON  
DB 1979 PG 329

103

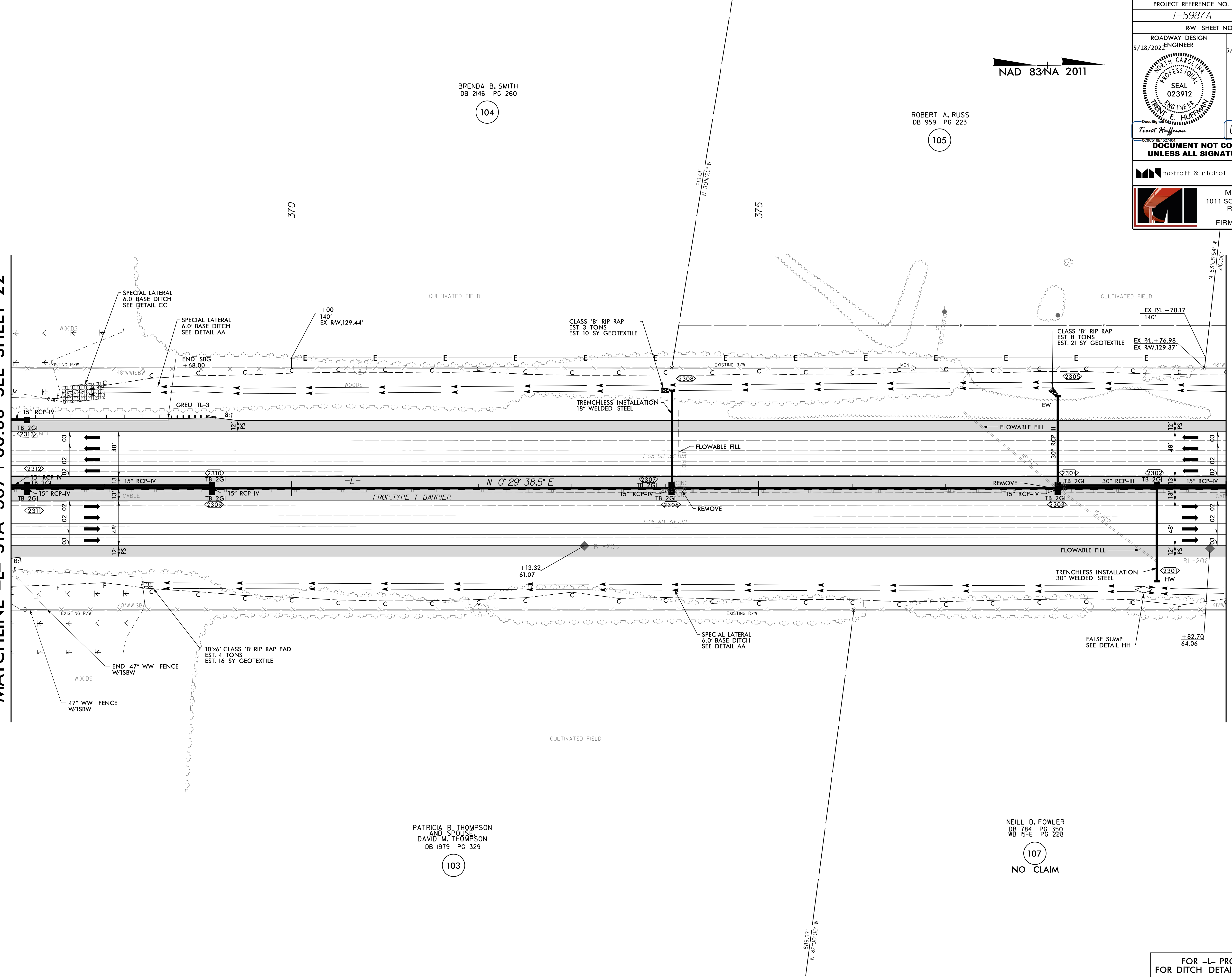
NEILL D. FOWLER  
DB 784 PG 350  
WB 15-E PG 228

107

NO CLAIM

MATCHLINE -L- STA 367 + 00.00 SEE SHEET 22

MATCHLINE -L- STA 380 + 00.00 SEE SHEET 24



5/2/2022  
D:\161125\0500\_CAD\CAD\15987A\Roadway\Proj\15987A\_RDY\_PSH\_023.dgn

FOR -L- PROFILE SEE SHEET 62  
FOR DITCH DETAILS SEE SHEET 2D-3