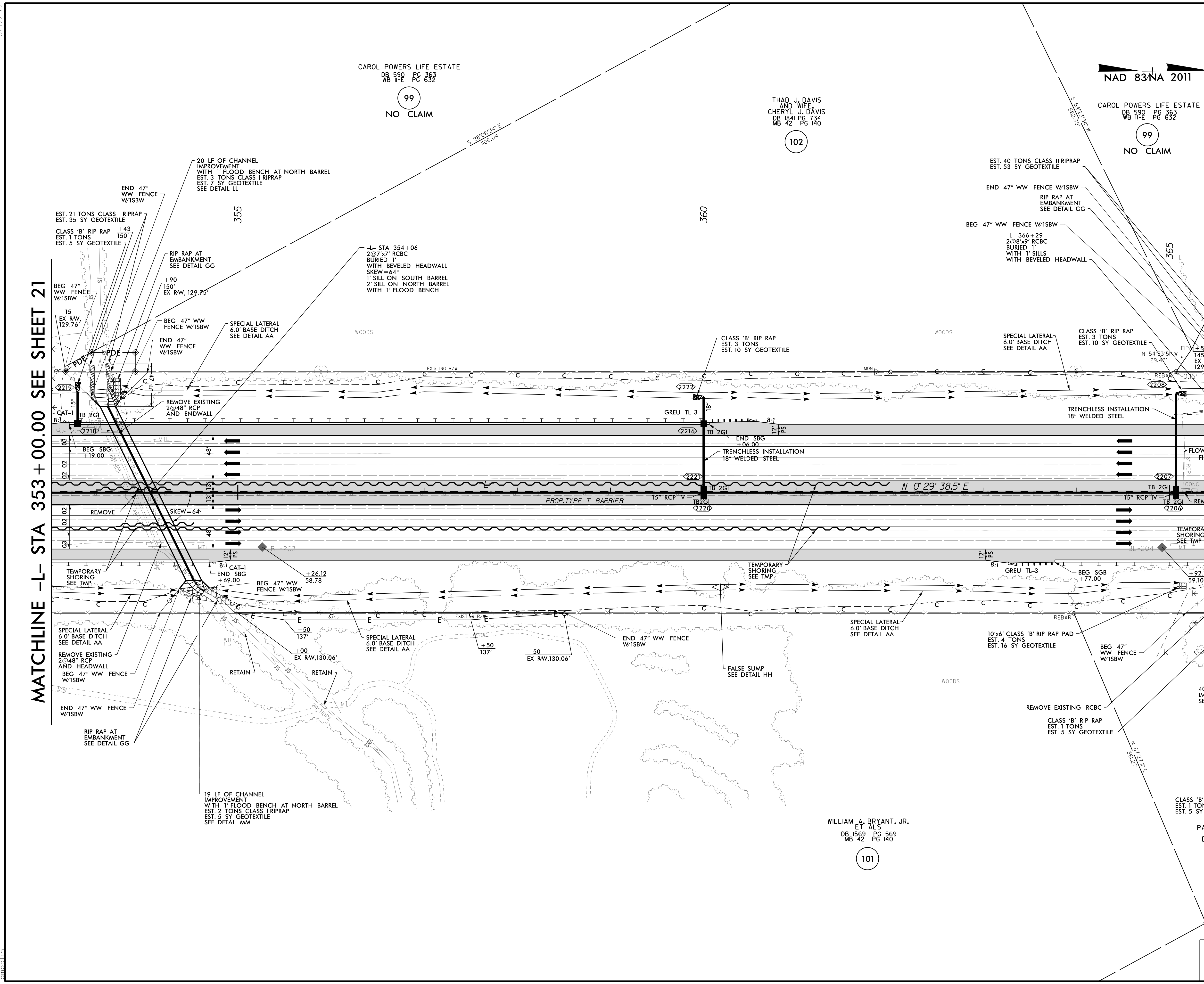


8/17/2022

PROJECT REFERENCE NO. 1-5987A		SHEET NO. 22	
RW SHEET NO.			
ROADWAY DESIGN ENGINEER 5/18/2022		HYDRAULICS ENGINEER 5/19/2022	
<b>DOCUMENT NOT CONSIDERED FINAL UNLESS ALL SIGNATURES COMPLETED</b>			
<b>MI ENGINEERING</b> 1011 SCHAUB DRIVE, SUITE 100 RALEIGH, NC 27606 (919) 851-6606 FIRM PE NUMBER: P-0671			



MATCHLINE -L- STA 353 + 00.00 SEE SHEET 21

MATCHLINE -L- STA 367 + 00.00 SEE SHEET 23

CAROL POWERS LIFE ESTATE  
 DB 590 PG 363  
 WB 11-E PG 632  
 99  
 NO CLAIM

THAD J. DAVIS  
 AND WIFE  
 CHERYL J. DAVIS  
 DB 1841 PG 734  
 MB 42 PG 140  
 102  
 NO CLAIM

NAD 83/NA 2011  
 CAROL POWERS LIFE ESTATE  
 DB 590 PG 363  
 WB 11-E PG 632  
 99  
 NO CLAIM

BRENDA B. SMITH  
 DB 2146 PG 260  
 104

WILLIAM A. BRYANT, JR.  
 ET ALS  
 DB 1569 PG 569  
 MB 62 PG 140  
 101

PATRICIA R THOMPSON  
 AND SPOUSE  
 DAVID M. THOMPSON  
 DB 1979 PG 329  
 103

FOR -L- PROFILE SEE SHEET 61  
 FOR CULVERT PLANS SEE C12-1 THRU C12-8  
 FOR CULVERT PLANS SEE C21-1 THRU C21-13  
 FOR DITCH DETAILS SEE SHEET 2D-3

E:\2022\1125\0500\CAD\15987A\Roadway\Proj\15987A\_RDY\_PSH\_022.dgn  
 8/17/2022 11:25:05 AM