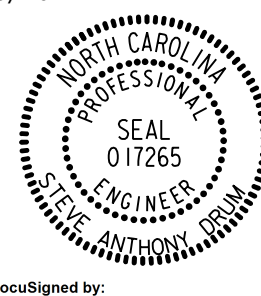
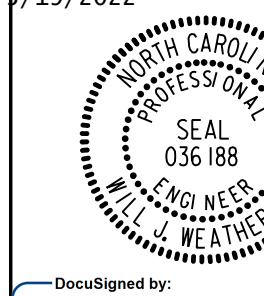



8.17.2022

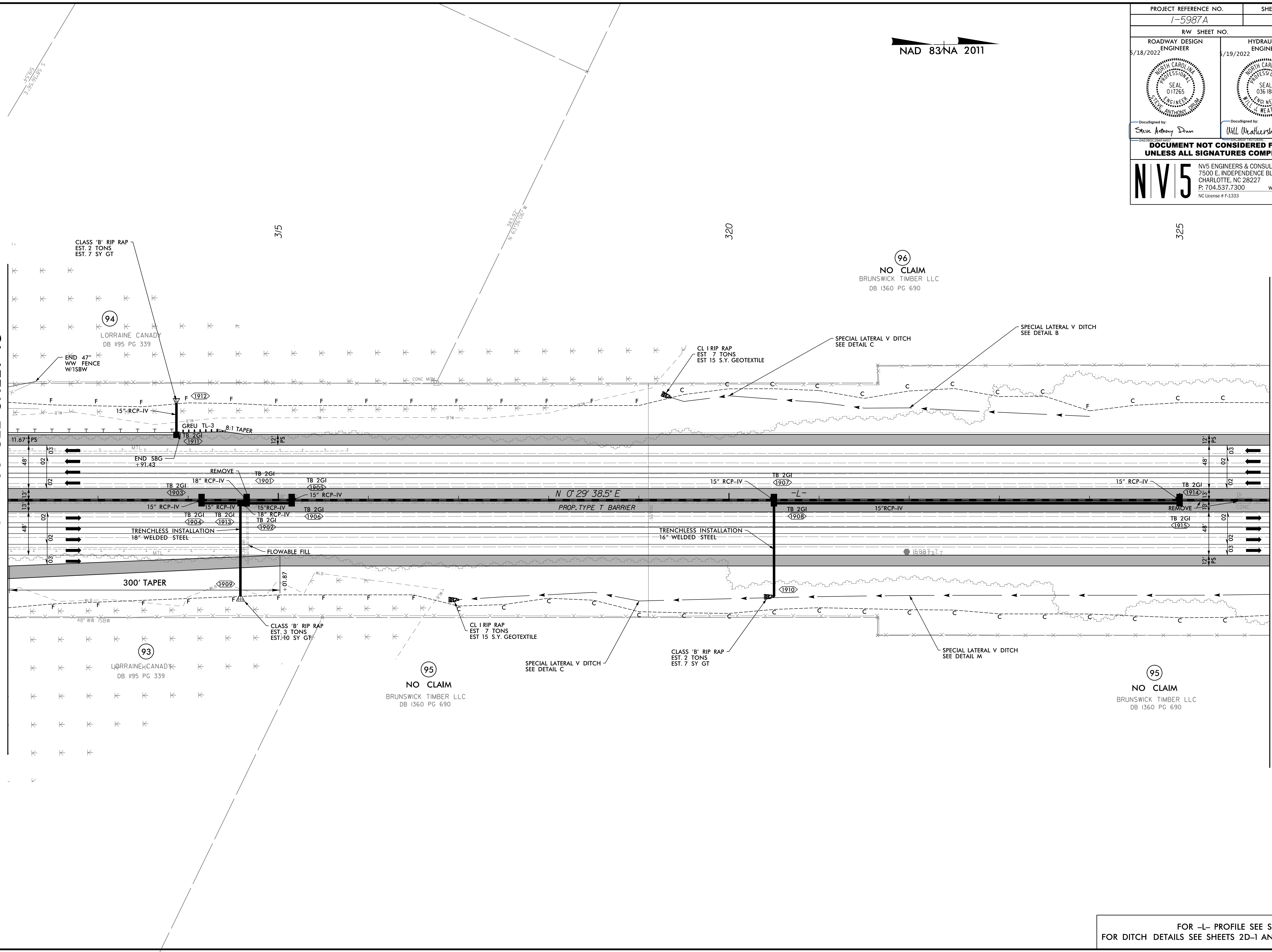
3:30/2022
R:\Projects\15987A_R0Y_PSH_019.dgn
David

PROJECT REFERENCE NO. 1-5987A	SHEET NO. 19
RW SHEET NO.	
ROADWAY DESIGN ENGINEER 5/18/2022	HYDRAULICS ENGINEER 5/19/2022
	
DocuSigned by: Steve Anthony Dren	DocuSigned by: Will Weatherbee
DOCUMENT NOT CONSIDERED FINAL UNLESS ALL SIGNATURES COMPLETED	
 NV5 ENGINEERS & CONSULTANTS, INC. 7500 E. INDEPENDENCE BLVD, STE 100 CHARLOTTE, NC 28227 P: 704.537.7300 www.nv5.com NC License # F-1333	

NAD 83/NA 2011

MATCHLINE -L- STA. 312 + 00 SEE SHEET 18

MATCHLINE -L- STA. 326 + 00 SEE SHEET 20



FOR -L- PROFILE SEE SHEET 58
FOR DITCH DETAILS SEE SHEETS 2D-1 AND 2D-2