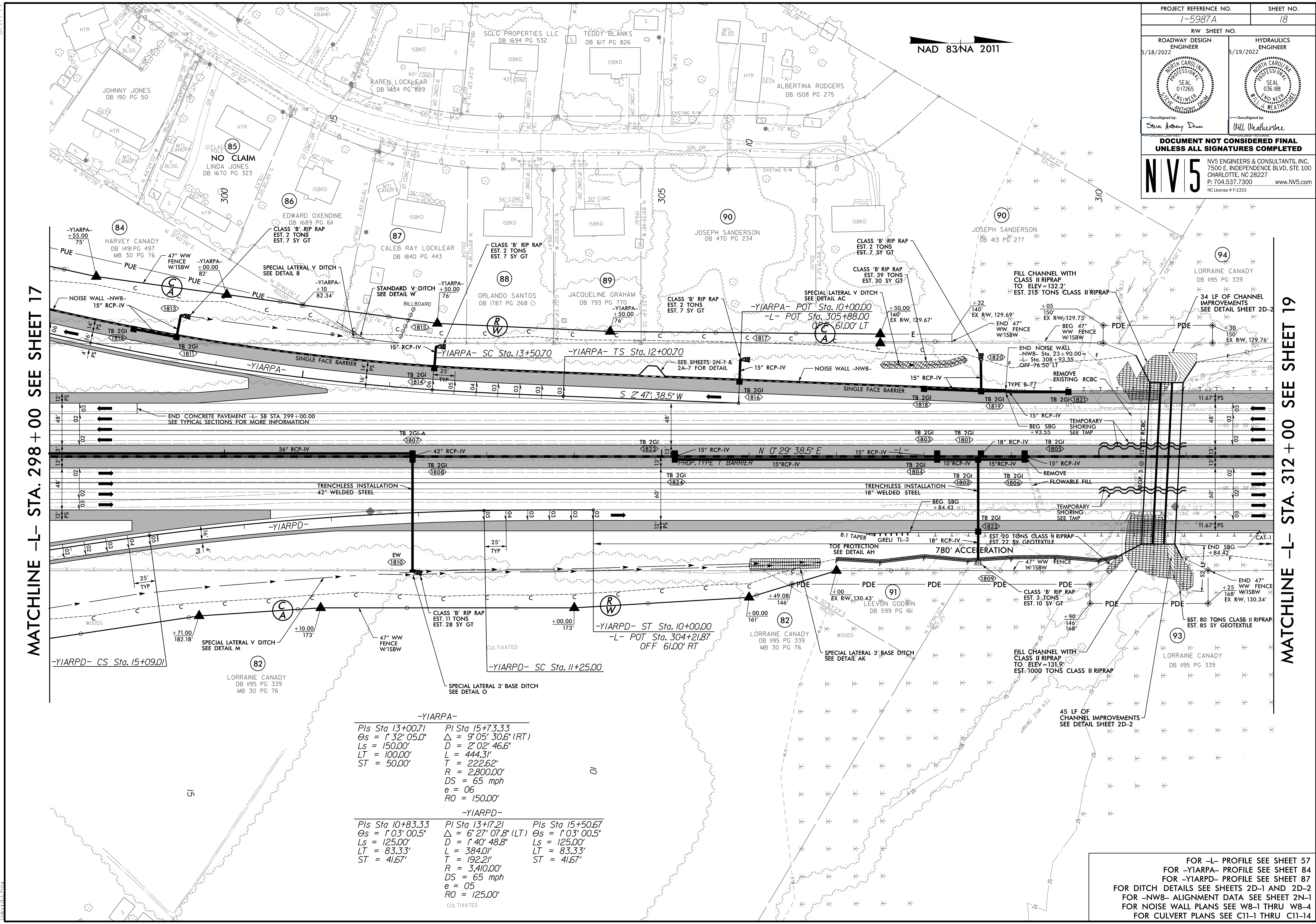


PROJECT REFERENCE NO. 1-5987A		SHEET NO. 18	
RW SHEET NO.			
ROADWAY DESIGN ENGINEER 5/18/2022		HYDRAULICS ENGINEER 5/19/2022	
DocuSigned by: Steve Anthony Dean Will Weatherbee			
DOCUMENT NOT CONSIDERED FINAL UNLESS ALL SIGNATURES COMPLETED			
		NV5 ENGINEERS & CONSULTANTS, INC. 7500 E. INDEPENDENCE BLVD, STE 100 CHARLOTTE, NC 28227 P: 704.537.7300 www.nv5.com NC License # F-1333	



MATCHLINE -L- STA. 298+00 SEE SHEET 17

MATCHLINE -L- STA. 312+00 SEE SHEET 19

-YIARPA-		
<i>PI</i> Sta 13+00.71	<i>PI</i> Sta 15+73.33	
$\Delta s = 1^{\circ} 32' 05.0''$	$\Delta = 9^{\circ} 05' 30.6'' (RT)$	
<i>Ls</i> = 150.00'	<i>D</i> = 2^{\circ} 02' 46.6''	
<i>LT</i> = 100.00'	<i>L</i> = 444.31'	
<i>ST</i> = 50.00'	<i>T</i> = 222.62'	
	<i>R</i> = 2,800.00'	
	<i>DS</i> = 65 mph	
	<i>e</i> = 06	
	<i>RO</i> = 150.00'	
-YIARPD-		
<i>PI</i> Sta 10+83.33	<i>PI</i> Sta 13+17.21	<i>PI</i> Sta 15+50.67
$\Delta s = 1^{\circ} 03' 00.5''$	$\Delta = 6^{\circ} 27' 07.8'' (LT)$	$\Delta s = 1^{\circ} 03' 00.5''$
<i>Ls</i> = 125.00'	<i>D</i> = 1^{\circ} 40' 48.8''	<i>Ls</i> = 125.00'
<i>LT</i> = 83.33'	<i>L</i> = 384.01'	<i>LT</i> = 83.33'
<i>ST</i> = 41.67'	<i>T</i> = 192.21'	<i>ST</i> = 41.67'
	<i>R</i> = 3,410.00'	
	<i>DS</i> = 65 mph	
	<i>e</i> = 05	
	<i>RO</i> = 125.00'	

FOR -L- PROFILE SEE SHEET 57
 FOR -YIARPA- PROFILE SEE SHEET 84
 FOR -YIARPD- PROFILE SEE SHEET 87
 FOR DITCH DETAILS SEE SHEETS 2D-1 AND 2D-2
 FOR -NW8- ALIGNMENT DATA SEE SHEET 2N-1
 FOR NOISE WALL PLANS SEE W8-1 THRU W8-4
 FOR CULVERT PLANS SEE C11-1 THRU C11-14

3/30/2022
 R:\Projects\15987A\RDY_PSH_018.dgn
 David