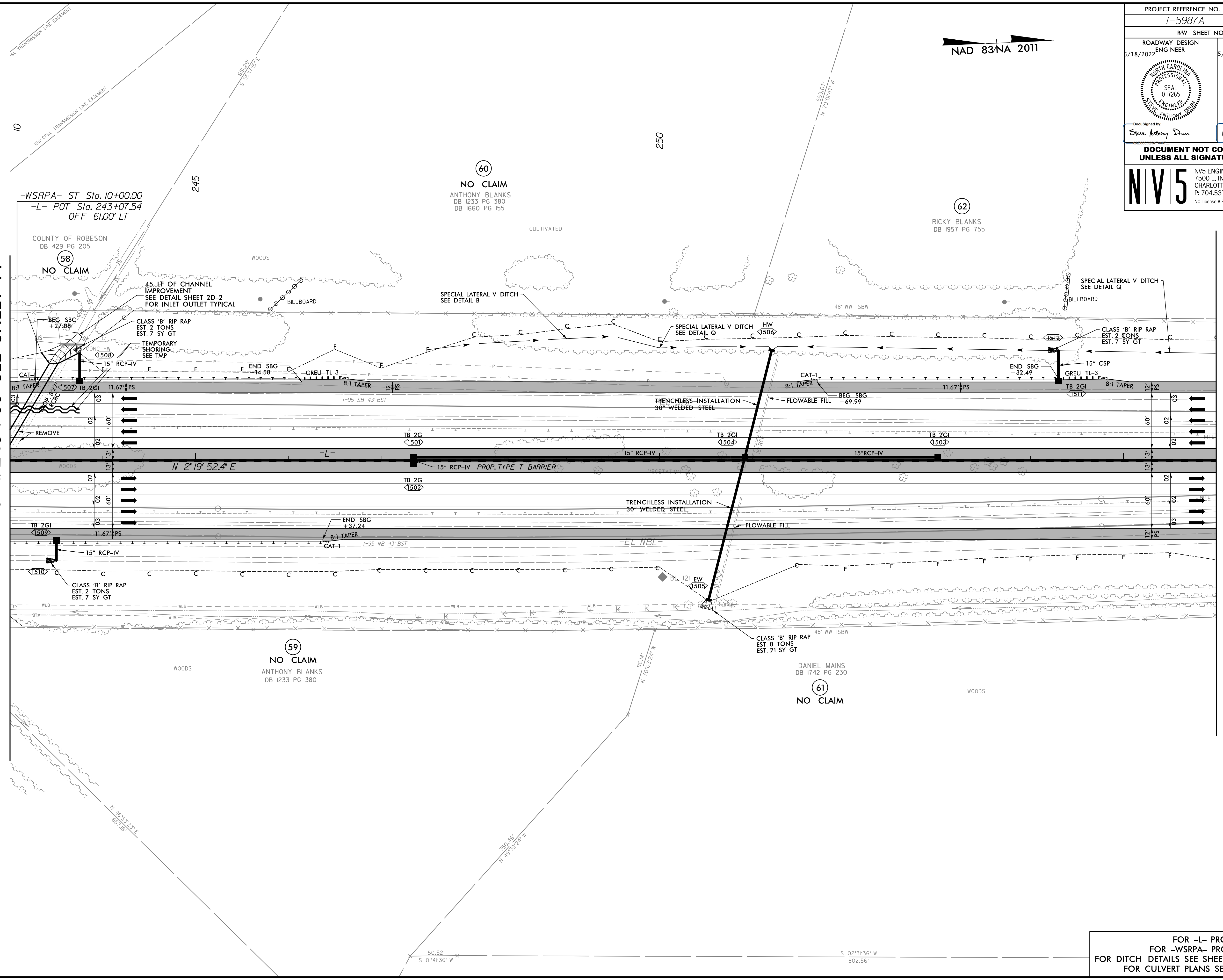


PROJECT REFERENCE NO. 1-5987A		SHEET NO. 15	
RW SHEET NO.		HYDRAULICS SHEET NO.	
ROADWAY DESIGN ENGINEER 5/18/2022	SEAL 017265 STEVE ANTHONY BLANKS	HYDRAULICS ENGINEER 5/19/2022	SEAL 036188 WILL WEATHERS
DocuSigned by: Steve Anthony Blanks		DocuSigned by: Will Weather	
DOCUMENT NOT CONSIDERED FINAL UNLESS ALL SIGNATURES COMPLETED			
NV5		NV5 ENGINEERS & CONSULTANTS, INC. 7500 E. INDEPENDENCE BLVD, STE 100 CHARLOTTE, NC 28227 P: 704.537.7300 www.NV5.com NC License # F-1333	

NAD 83/NA 2011

MATCHLINE -L- STA. 243 + 00 SEE SHEET 14

MATCHLINE -L- STA. 256 + 00 SEE SHEET 16



FOR -L- PROFILE SEE SHEET 53
 FOR DITCH DETAILS SEE SHEETS 2D-1 AND 2D-2
 FOR CULVERT PLANS SEE C2-1 THRU C2-8

3/30/2022
 R:\Projects\15987A_RDY_PSH_015.dgn
 David