
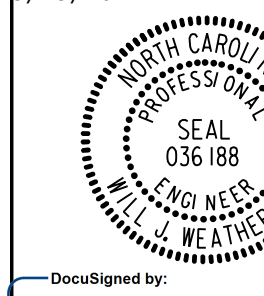


8.17.19

PROJECT REFERENCE NO. 1-5987A	SHEET NO. 11
RW SHEET NO.	
ROADWAY DESIGN ENGINEER 5/18/2022	HYDRAULICS ENGINEER 5/19/2022
	
DocuSigned by: Steve Anthony Dren	DocuSigned by: Will Weatherbee
<b>DOCUMENT NOT CONSIDERED FINAL UNLESS ALL SIGNATURES COMPLETED</b>	
<b>NV5</b>	
NV5 ENGINEERS & CONSULTANTS, INC. 7500 E. INDEPENDENCE BLVD, STE 100 CHARLOTTE, NC 28227 P: 704.537.7300 www.NV5.com NC License # F-1333	

-L-  
 PIs Sta 172+62.41 PI Sta 180+96.63  
 $\Theta_s = 0^\circ 44' 38.8''$   $\Delta = 11' 23' 06.4''$  (LT)  
 $L_s = 200.00'$   $D = 0' 44' 38.8''$   
 $LT = 133.33'$   $L = 1,530.05'$   
 $ST = 66.67'$   $T = 767.55'$   
 $R = 7,700.00'$   
 $DS = 75$  mph  
 $e = 04$   
 $RO = 200.00'$

NAD 83/NA 2011

40  
 NO CLAIM  
 PAM PETTY  
 WILL 18-E PG 590  
 MB 33 PG 70

42  
 NO CLAIM  
 PAM PETTY  
 WILL 18-E PG 590  
 MB 33 PG 70

42  
 NO CLAIM  
 PAM PETTY  
 WILL 18-E PG 590  
 MB 33 PG 70

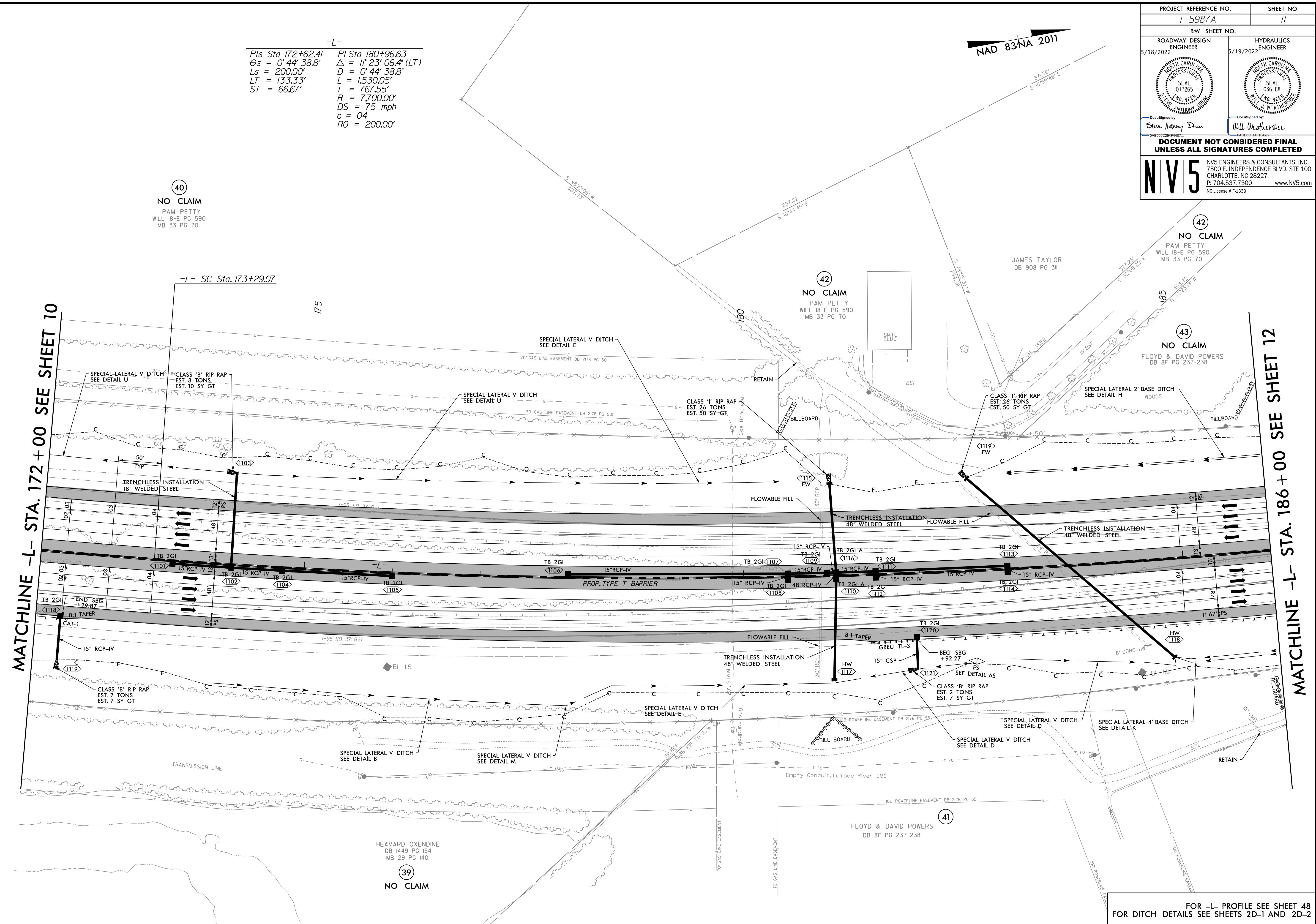
43  
 NO CLAIM  
 FLOYD & DAVID POWERS  
 DB 8F PG 237-238

39  
 NO CLAIM  
 HEAVARD OXENDINE  
 DB 1449 PG 194  
 MB 29 PG 140

41  
 FLOYD & DAVID POWERS  
 DB 8F PG 237-238

MATCHLINE -L- STA. 172 + 00 SEE SHEET 10

MATCHLINE -L- STA. 186 + 00 SEE SHEET 12



FOR -L- PROFILE SEE SHEET 48  
 FOR DITCH DETAILS SEE SHEETS 2D-1 AND 2D-2

3/30/2022  
 R:\Projects\15987A\_RDY\_PSH\_011.dgn  
 David