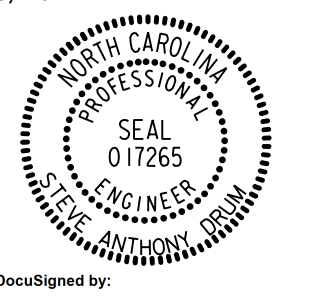




8/17/99

PROJECT REFERENCE NO. 1-5987A	SHEET NO. 10
RW SHEET NO.	
ROADWAY DESIGN ENGINEER 5/18/2022	HYDRAULICS ENGINEER 5/19/2022
	
Designed by Steve Anthony Dren	Designed by Will Weatherman
DOCUMENT NOT CONSIDERED FINAL UNLESS ALL SIGNATURES COMPLETED	
 NV5 ENGINEERS & CONSULTANTS, INC. 7500 E. INDEPENDENCE BLVD, STE 100 CHARLOTTE, NC 28227 P: 704.537.7300 www.NV5.com NC License # F-1333	

NAD 83/NA 2011

-L-
 Pls Sta 172+62.41
 Os = 0' 44" 38.8"
 Ls = 200.00'
 LT = 133.33'
 ST = 66.67'

40
 NO CLAIM
 PAM PETTY
 WILL 18-E PG 590
 MB 33 PG 70

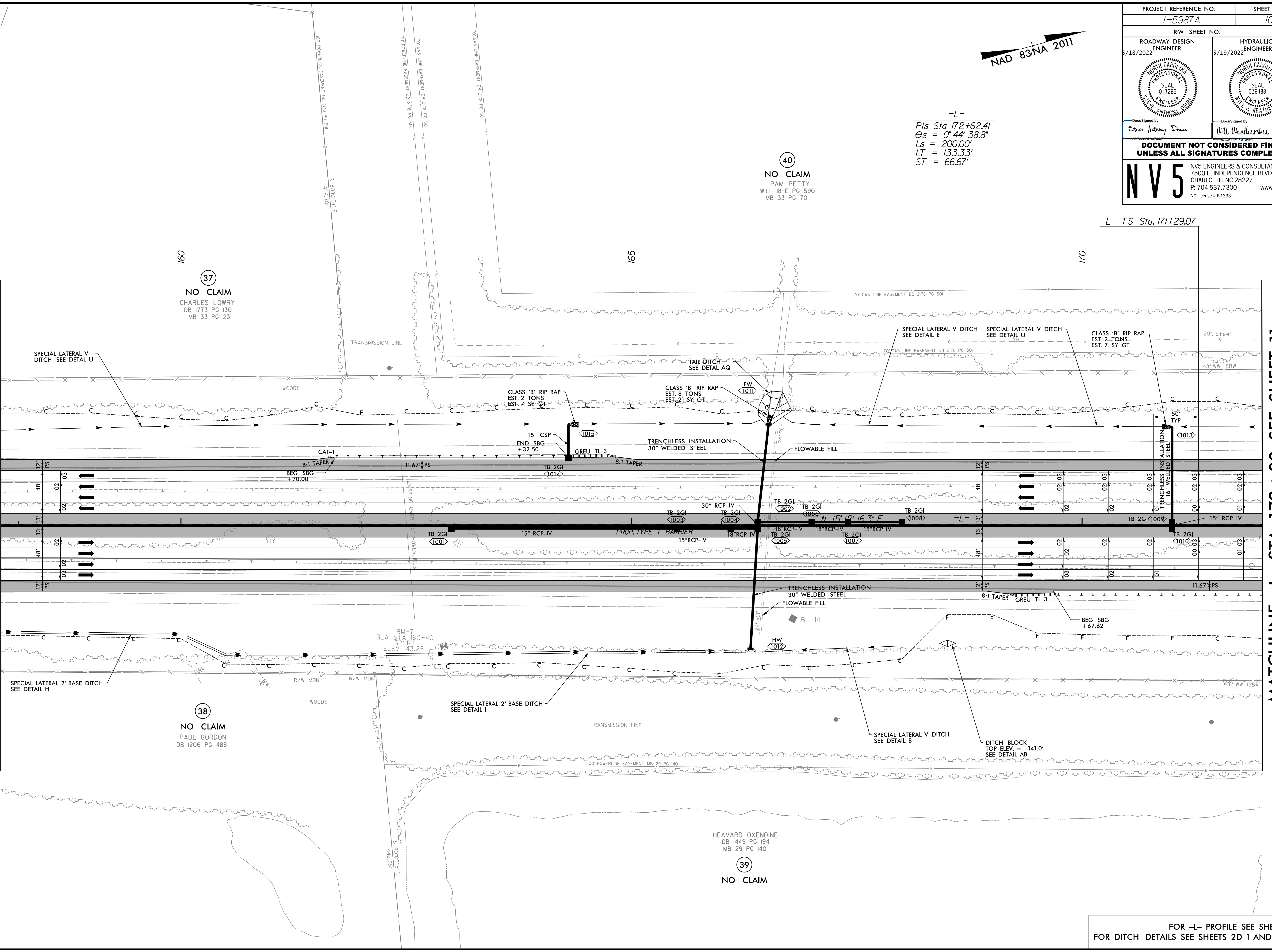
37
 NO CLAIM
 CHARLES LOWRY
 DB 1773 PG 130
 MB 33 PG 23

38
 NO CLAIM
 PAUL GORDON
 DB 1206 PG 488

39
 NO CLAIM
 HEAVARD OXENDINE
 DB 1449 PG 194
 MB 29 PG 140

MATCHLINE -L- STA. 158 + 00 SEE SHEET 9

MATCHLINE -L- STA. 172 + 00 SEE SHEET 11



-L- TS Sta. 171+29.07

FOR -L- PROFILE SEE SHEET 47
 FOR DITCH DETAILS SEE SHEETS 2D-1 AND 2D-2

3/30/2022
 R:\Projects\15987A_RDY_PSH_010.dgn
 David