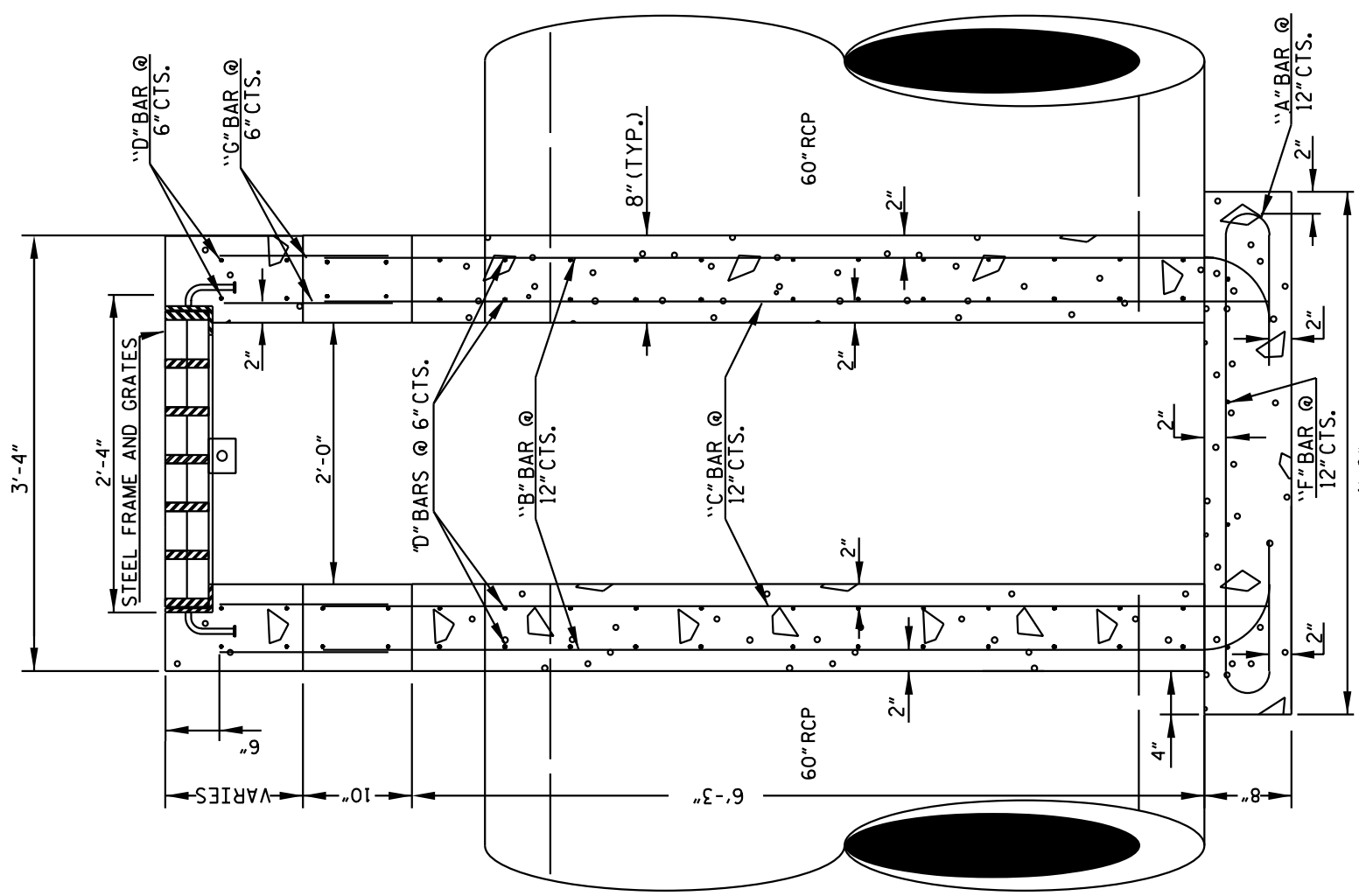


STATE OF NORTH CAROLINA
DEPT. OF TRANSPORTATION
DIVISION OF HIGHWAYS
RALEIGH, N.C.

ENGLISH DETAIL DRAWING FOR
TRAFFIC BEARING GRATED INLET
FOR 60" REINFORCED CONCRETE PIPE

SHEET 1 OF 2
840D36



SECTION Y-Y

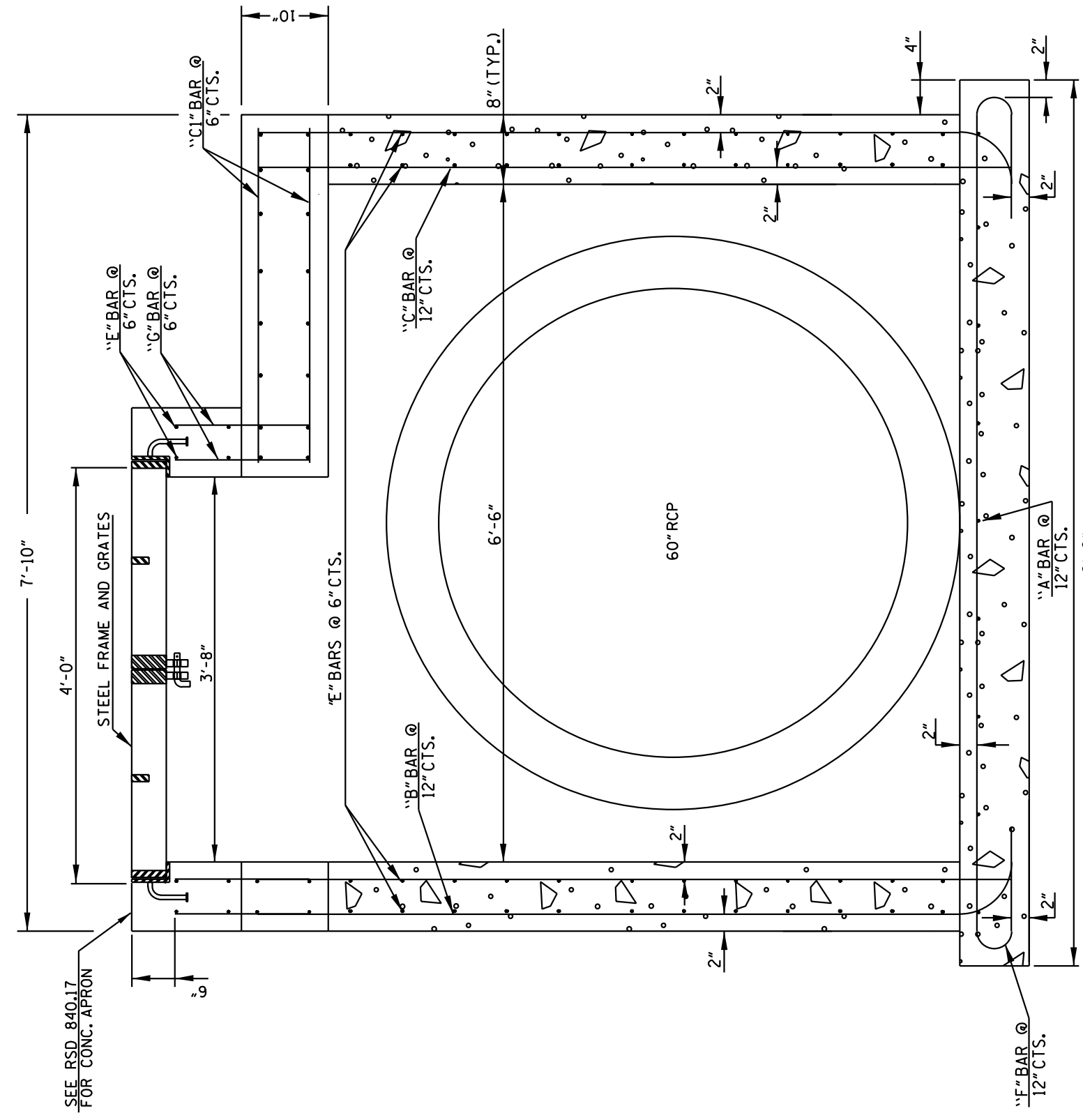
- GENERAL NOTES:
 -BUILD WITH CLASS 'AA' CONCRETE CORNERS 3"
 -CHAMFER ALL CORNERS OF CONCRETE
 -USE WEDGES TO CONSIDER THE BOTTOM SLAB
 -IF PIPES ARE SET IN THE BASE, FOLLOW CONSTRUCTION
 PROCEDURES SHOWN BY STD. DWG. 840.00.
 -PRECAST UNITS CONCRETE MAY BE
 USED FOR THE SLAB AND SIDE WALLS
 -REFER TO STD. DWG. 840.31 FOR FRAME ANCHORAGE.
 -PROVIDE DROP INLETS OVER 3'-6" DEEP WITH STEPS AS
 DIRECTED BY STD. DWG. 840.66.
 -FRAME AND GRATES ARE SEPARATE CONTRACT ITEM.

- NOTES:
 -HORIZONTAL (UP TO 10" MAX. IN BOTH DIRECTIONS) AND VERTICAL (UP TO 14" MAX.)
 DIMENSIONS MAY BE ADJUSTED AS THE FIELD CONDITIONS AND/OR ALTERNATE DESIGNS
 REQUIRE.
 -ALL ADJUSTMENTS ARE TO BE MADE AS DIRECTED BY THE ENGINEER.

STATE OF NORTH CAROLINA
DEPT. OF TRANSPORTATION
DIVISION OF HIGHWAYS
RALEIGH, N.C.

ENGLISH DETAIL DRAWING FOR
TRAFFIC BEARING GRATED INLET
FOR 60" REINFORCED CONCRETE PIPE

SHEET 1 OF 2
840D36

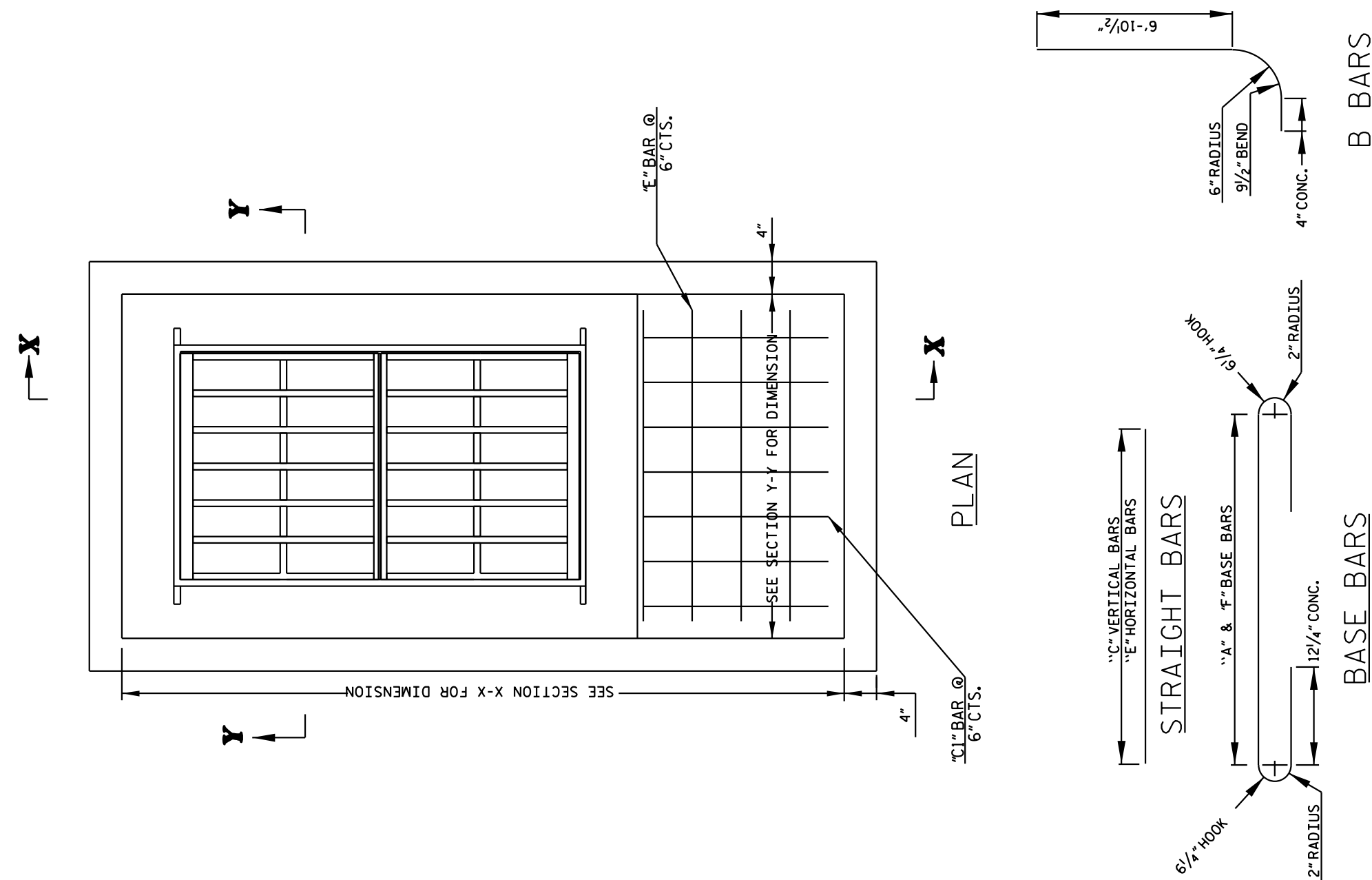


SECTION X-X

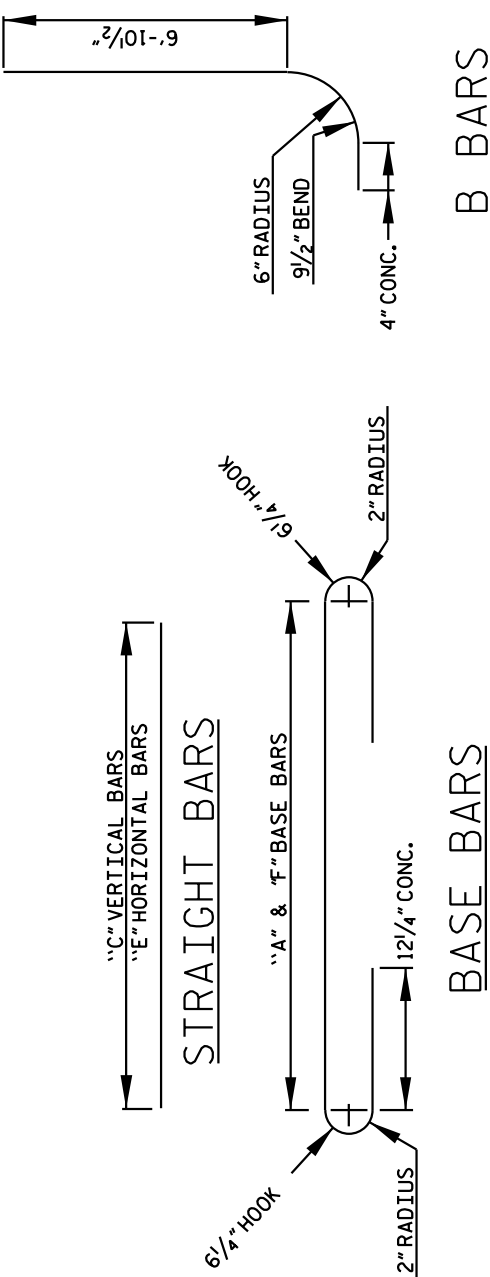
STATE OF NORTH CAROLINA
DEPT. OF TRANSPORTATION
DIVISION OF HIGHWAYS
RALEIGH, N.C.

ENGLISH DETAIL DRAWING FOR
TRAFFIC BEARING GRATED INLET
FOR 60" REINFORCED CONCRETE PIPES

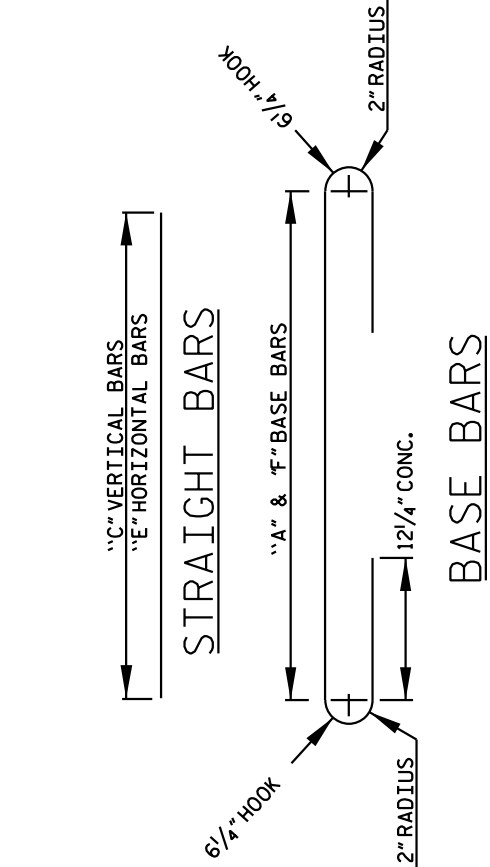
SHEET 2 OF 2
840D36



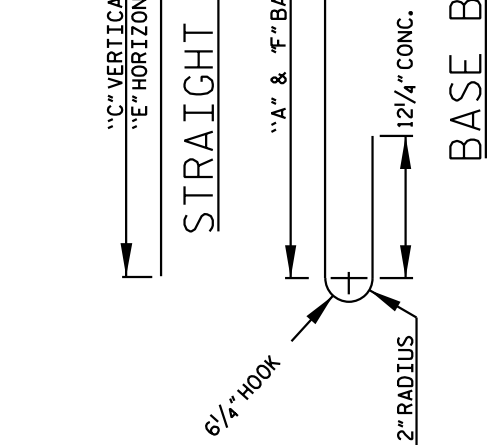
PLAN



B BARS



STRAIGHT BARS



BASE BARS

| BAR | SIZE | LENGTH | QUANTITY | WEIGHT |
|---|------|---------|----------|--------|
| A | #5 | 6'-5" | 9 | 60 |
| B | #5 | 8'-0" | 22 | 184 |
| C | #5 | 7'-5" | 22 | 170 |
| D | #5 | 3'-2" | 7 | 23 |
| E | #5 | 7'-6" | 64 | 501 |
| F | #5 | 3'-0" | 76 | 238 |
| G | #5 | 10'-11" | 4 | 46 |
| | | | 60 | 99 |
| REINF. STEEL (TOTAL WEIGHT LBS.) | | | | 1321 |
| CONCRETE (TOTAL CU.YDS.) CLASS 'AA' | | | | 5.1 |
| NO DEDUCTIONS HAVE BEEN MADE TO ACCOMMODATE PIPES | | | | |

FOR EVERY 1 FOOT OF RISER USE 0.41 CU.YDS
CONCRETE AND 151 LBS STEEL.

STATE OF NORTH CAROLINA
DEPT. OF TRANSPORTATION
DIVISION OF HIGHWAYS
RALEIGH, N.C.

ENGLISH DETAIL DRAWING FOR
TRAFFIC BEARING GRATED INLET
FOR 60" REINFORCED CONCRETE PIPE

SHEET 2 OF 2
840D36

STRUCTURE DESIGN ENGINEER

5/6/2022

DOCUMENT NOT CONSIDERED FINAL
UNLESS ALL SIGNATURES COMPLETED

NV5 NV5 ENGINEERS & CONSULTANTS, INC.
7500 E. INDEPENDENCE BLVD, STE 100
CHARLOTTE, NC 28227
P: 704.537.7300 www.NV5.com
NC License # F-1333