

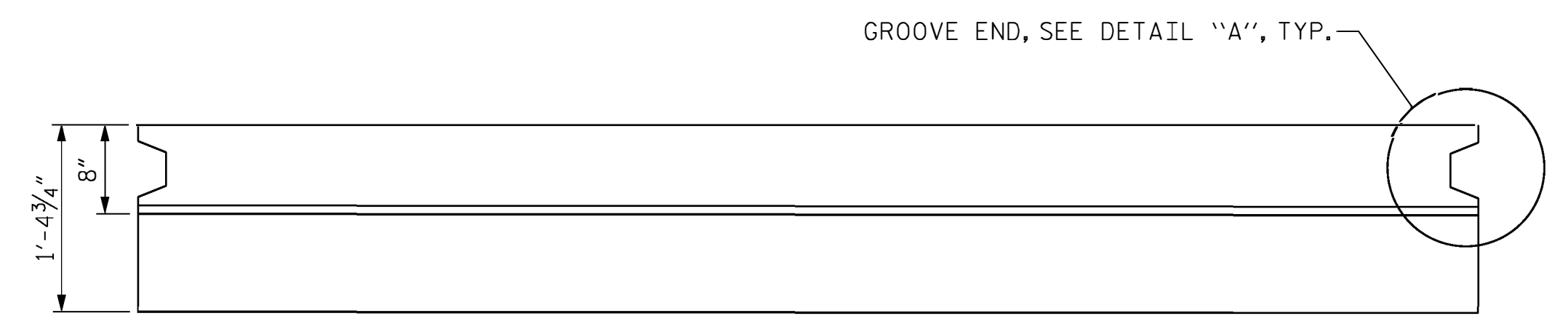


DocuSigned by:
Ronald Elton Davenport, Jr.
 F18903847442
 5/18/2022

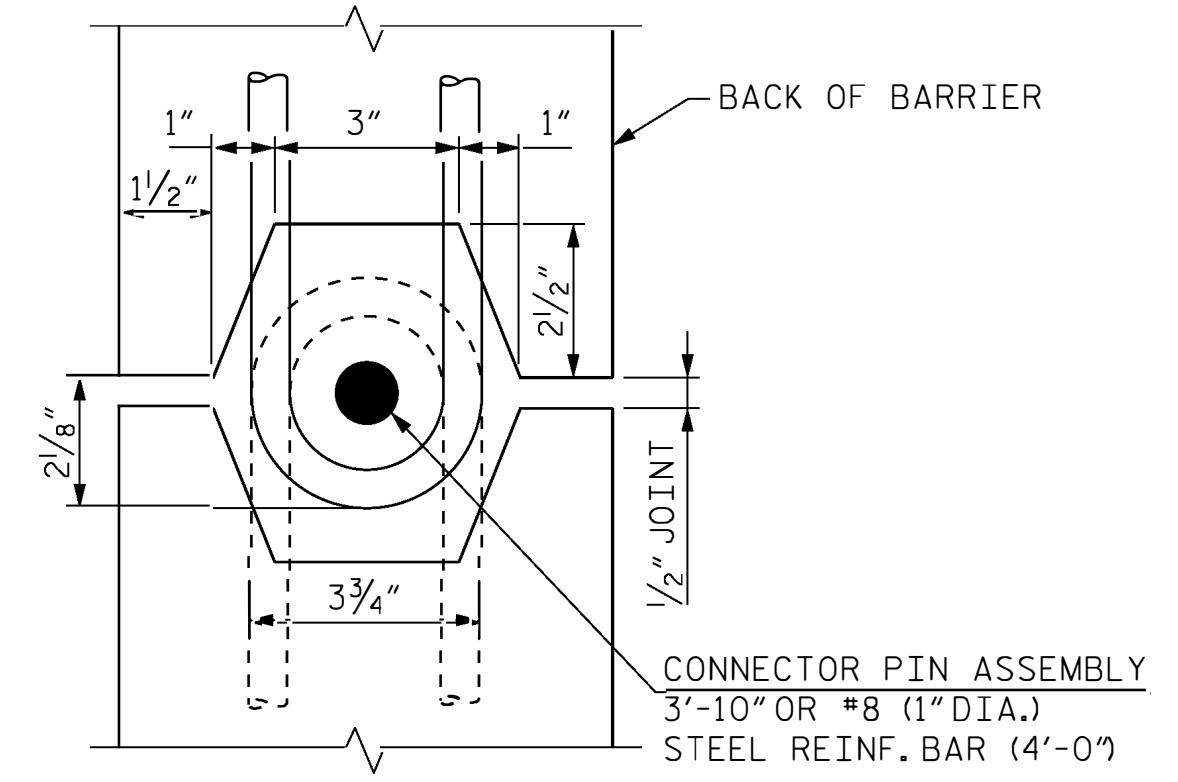
NOTES:

ALL PARTS OF CONNECTOR PIN ASSEMBLY SHALL BE GALVANIZED IN ACCORDANCE WITH ASTM A-153 SPECIFICATIONS.

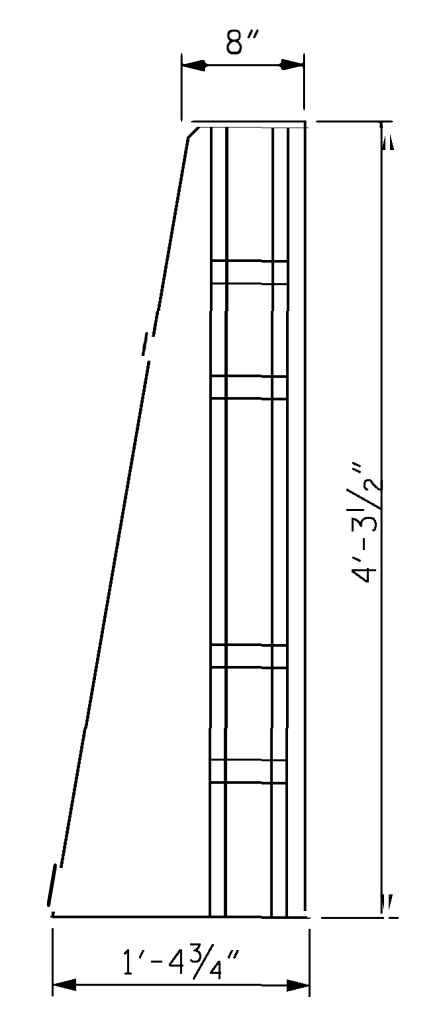
ALL CONCRETE IN PRECAST REINFORCED SINGLE FACE SINGLE SLOPE CONCRETE BARRIER RAIL SHALL BE CLASS AA.



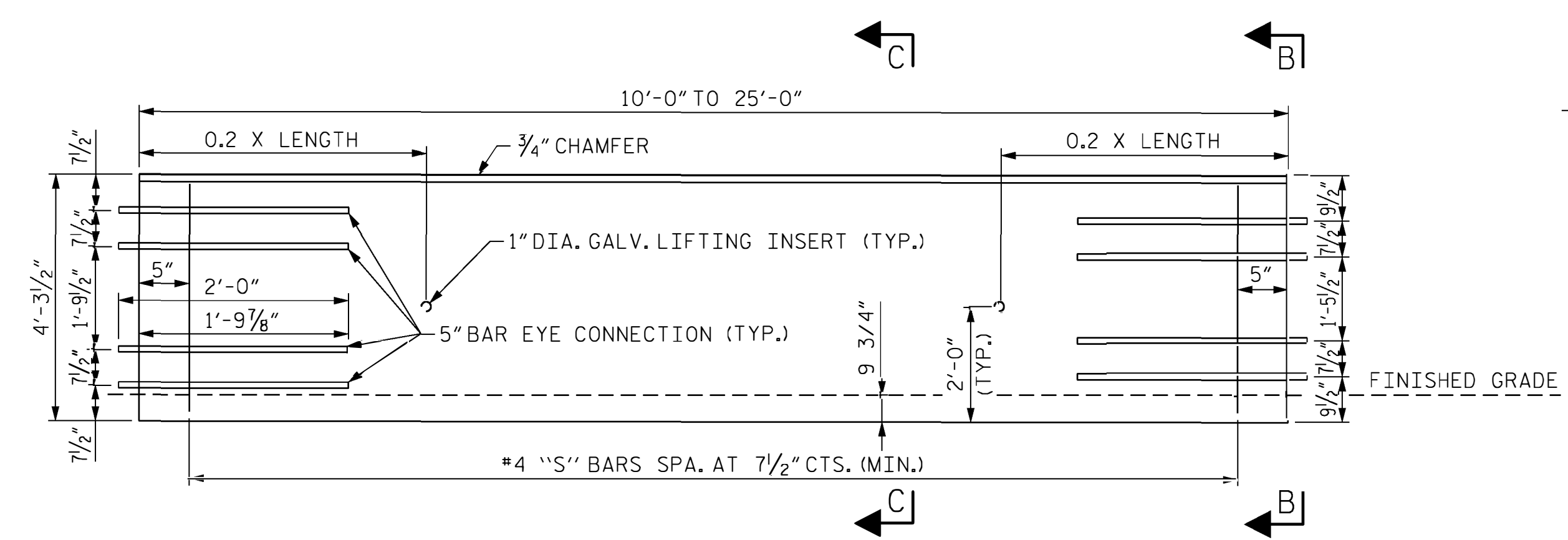
PLAN



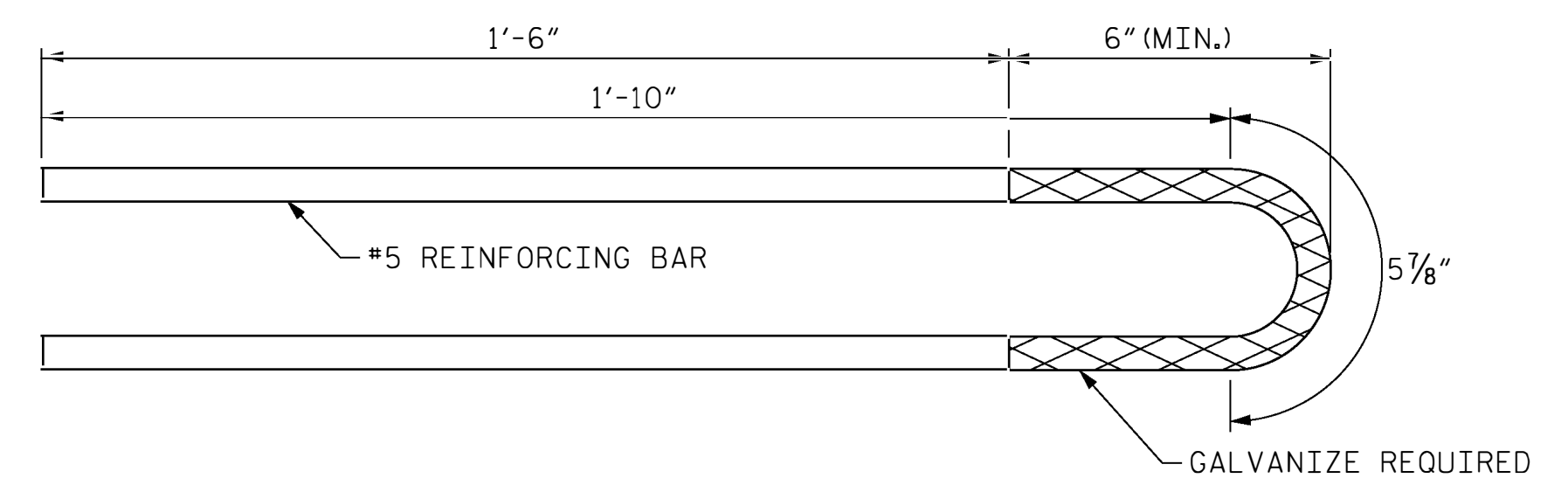
DETAIL "A"



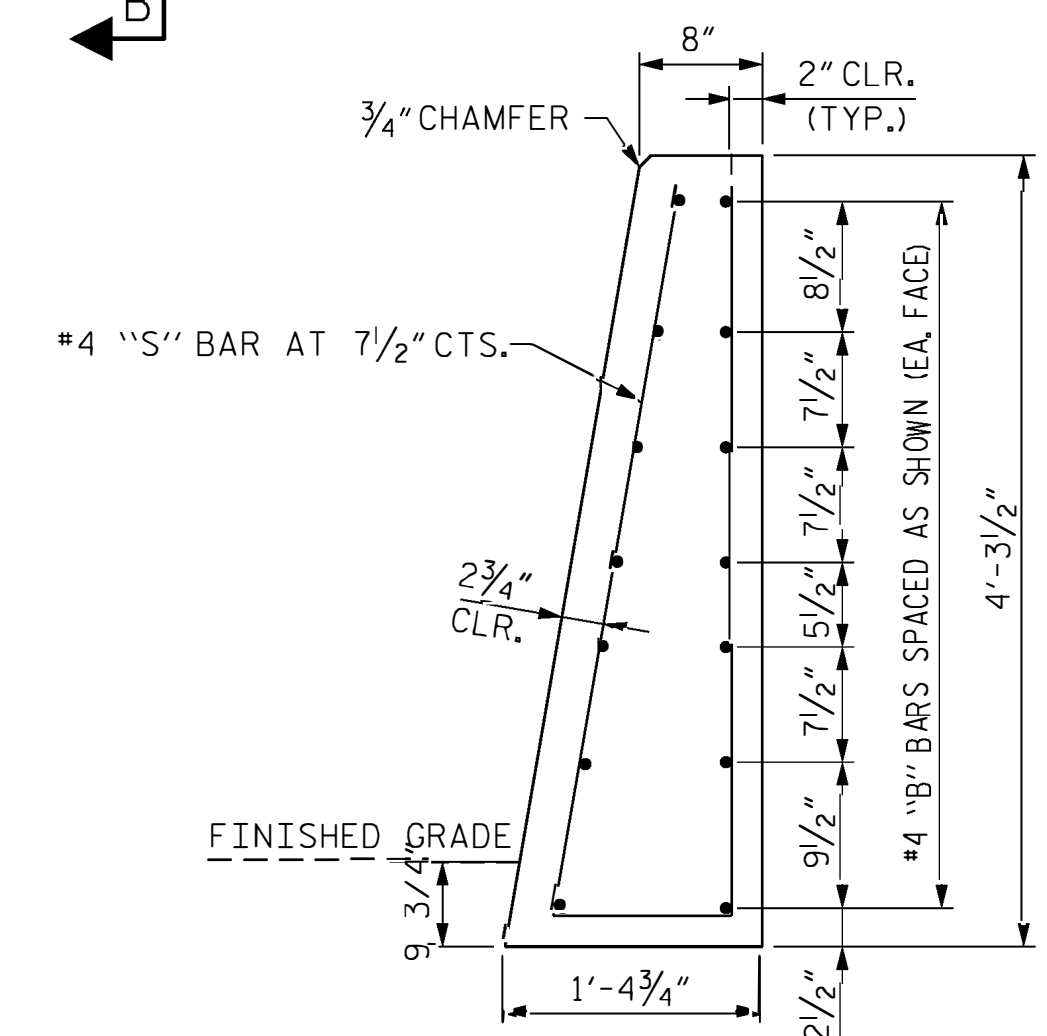
SECTION B-B



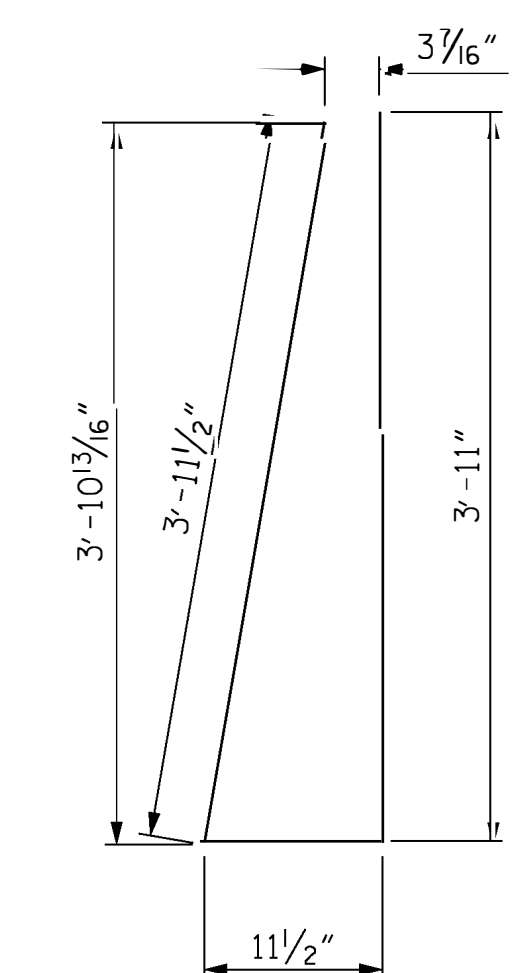
FRONT ELEVATION MIDDLE BARRIER UNIT



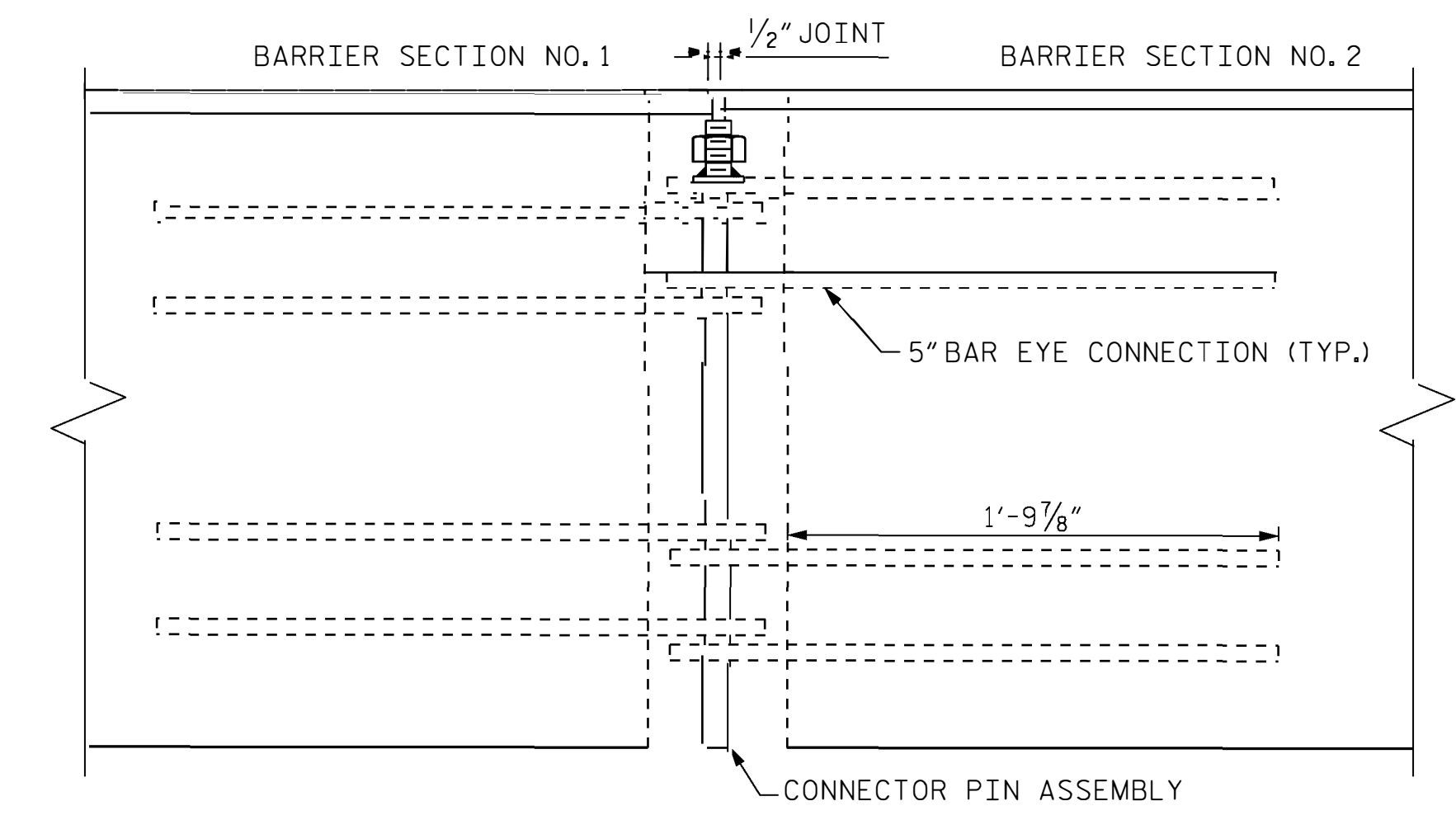
DETAIL OF REINFORCING EYE BAR



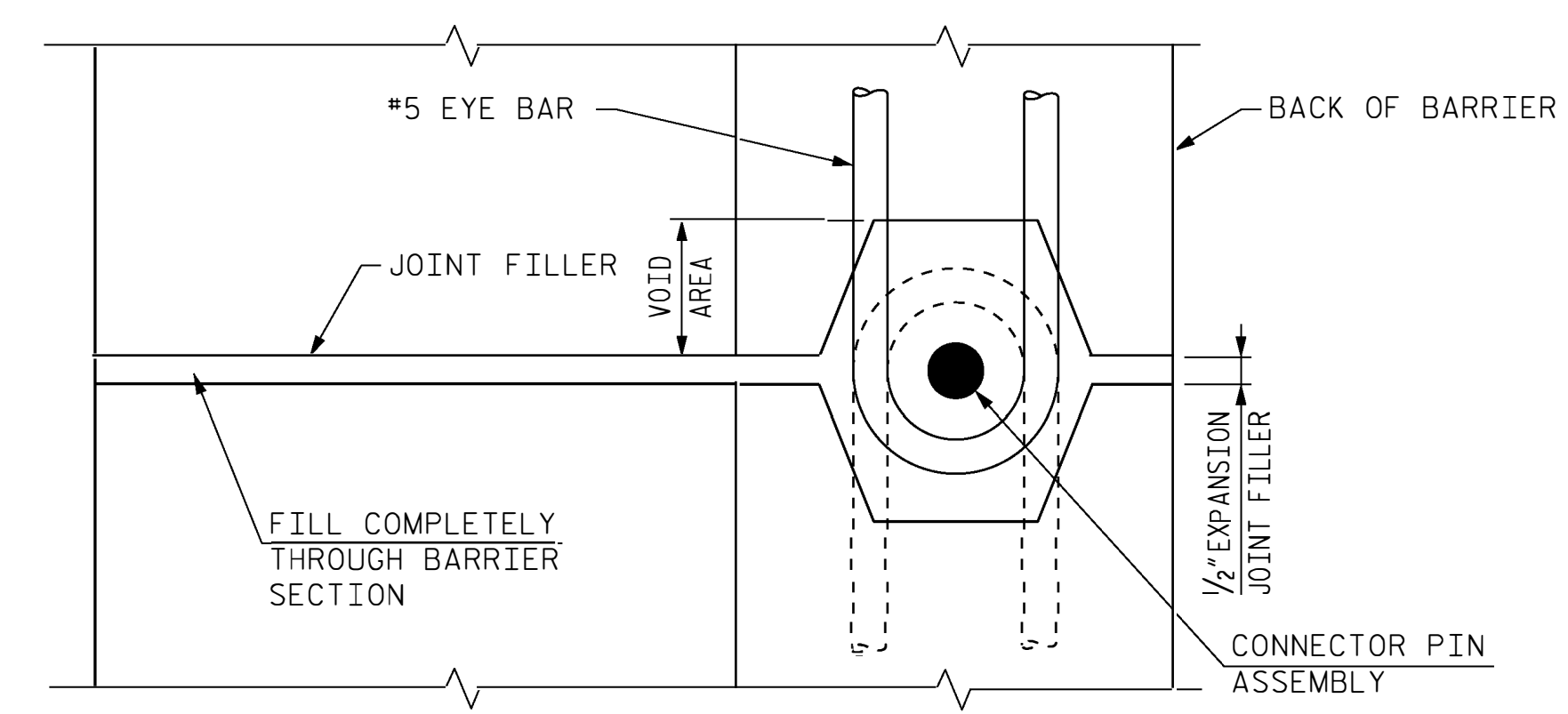
SECTION C-C



"S" BARS

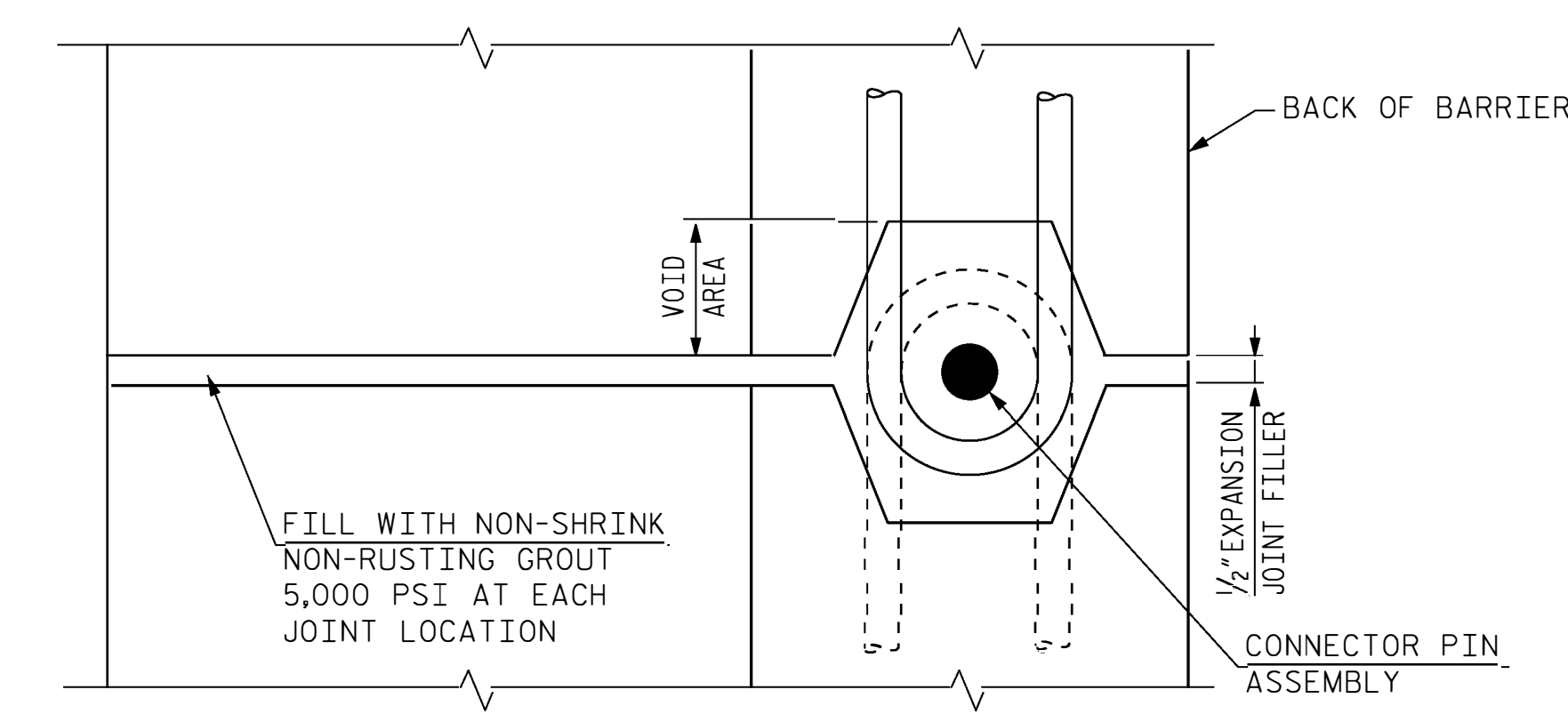


JOINT VIEW ELEVATION

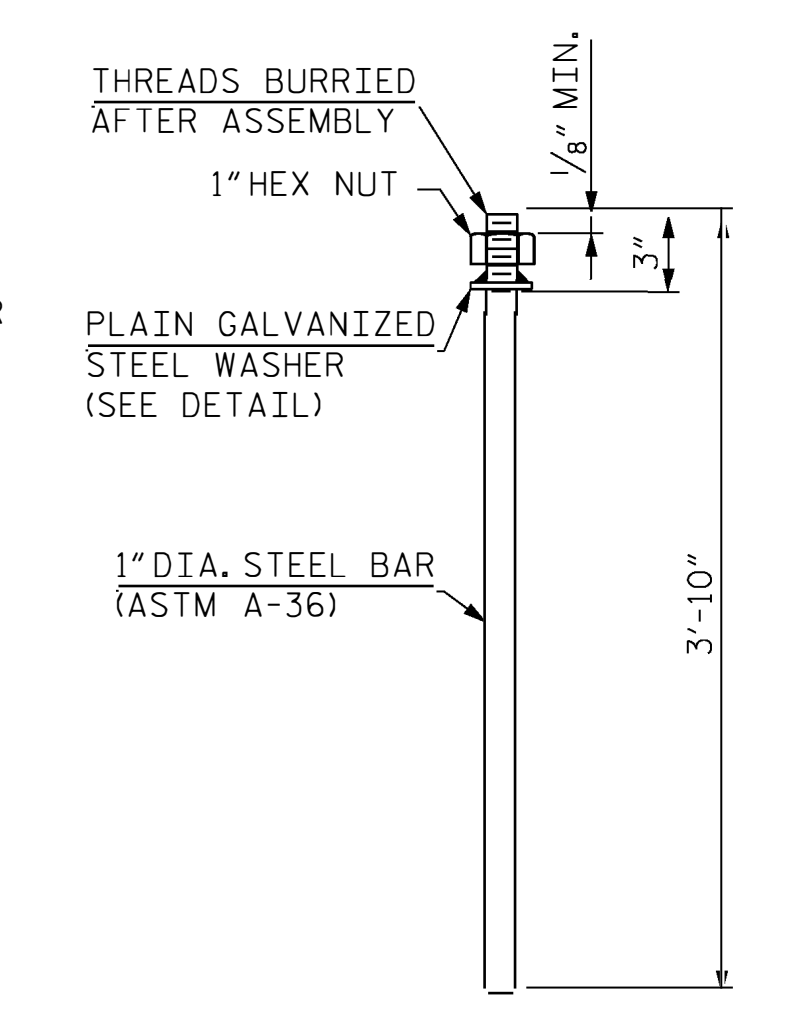


JOINT FILLER DETAIL

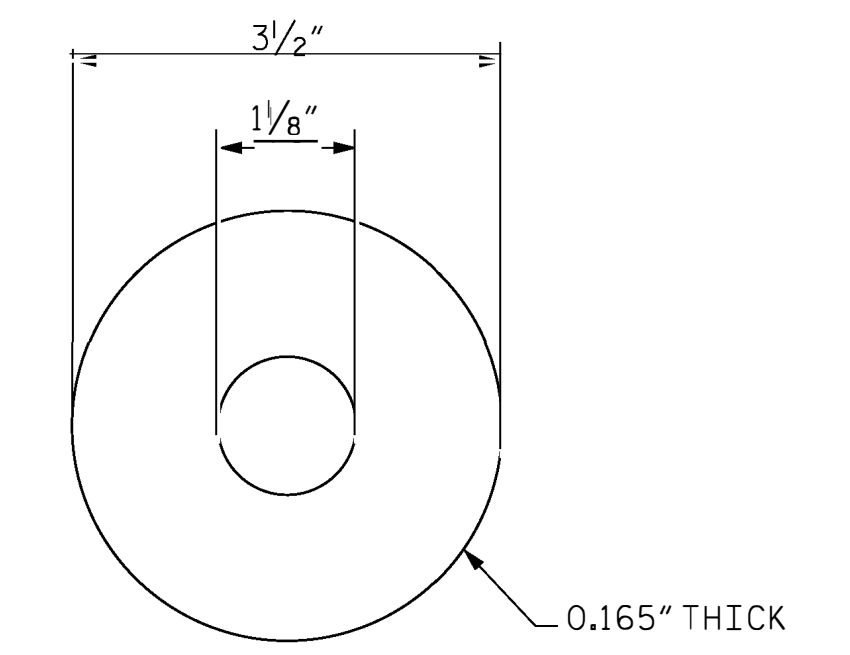
USE JOINT FILLER DETAIL AT 75 FT MAXIMUM SPACINGS



PLAN OF BONDED CONNECTION OF PRECAST UNIT



CONNECTOR PIN ASSEMBLY



PLAIN GALVANIZED STEEL WASHER FOR 1" PIN

CONTRACTS STANDARDS AND DEVELOPMENT UNIT	
Office 919-707-6950	FAX 919-250-4119
PRECAST REINFORCED SINGLE FACE SINGLE SLOPE CONCRETE BARRIER RAIL	
ORIGINAL BY: J. E. KEENE	DATE: APR 2019
MODIFIED BY:	DATE:
CHECKED BY:	DATE:
FILE SPEC.: k Kempf/english/single face single slope barrier rail.dgn	

\$\$\$USERNAME\$\$\$
 \$\$\$DATE\$\$\$ \$\$\$FILE\$\$\$