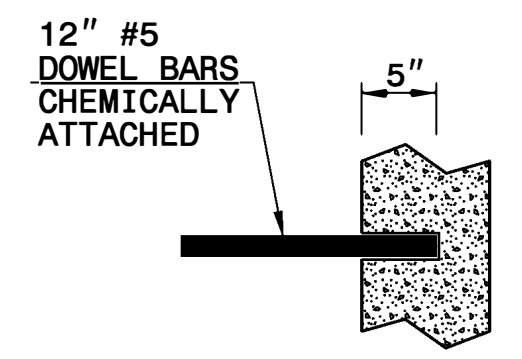
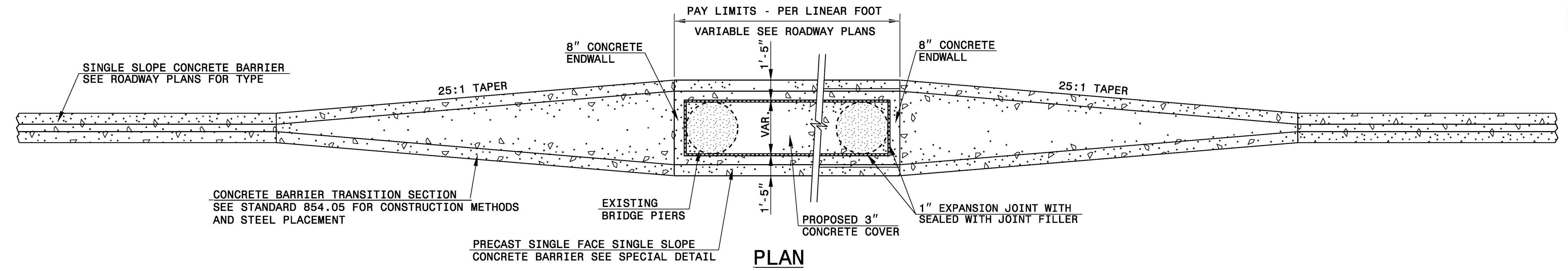


* DRAWING NOT TO SCALE

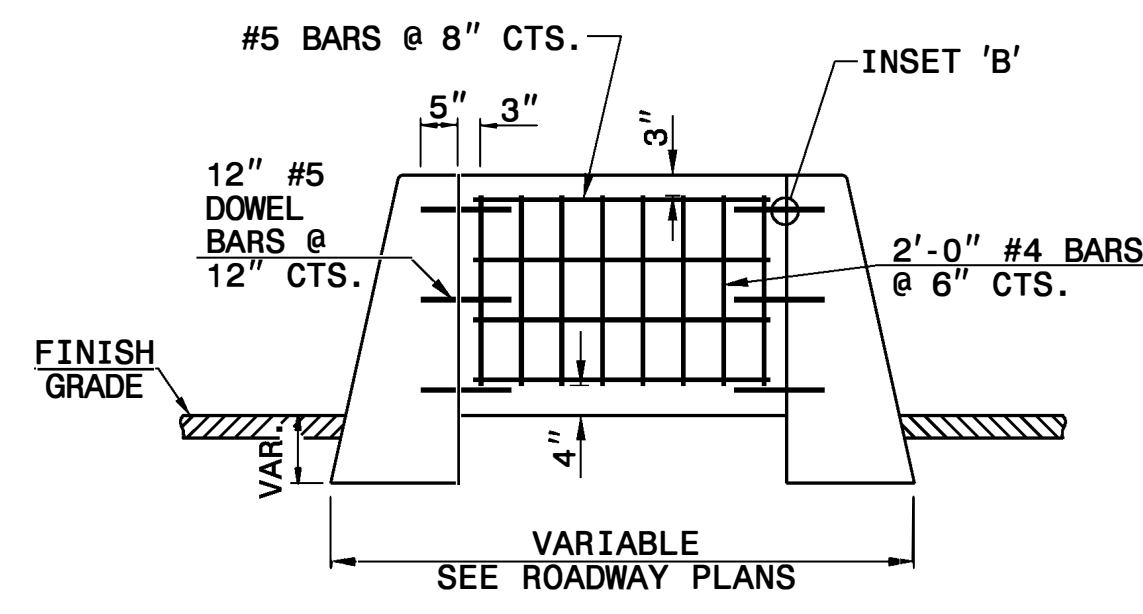
PROJECT REFERENCE NO. I-5987A	SHEET NO. 2C-2
DOCUMENT NOT CONSIDERED FINAL UNLESS ALL SIGNATURES COMPLETED	



DocuSigned by:
Ronald Elton Davenport, Jr.
 F8186038A7A442
 5/18/2022

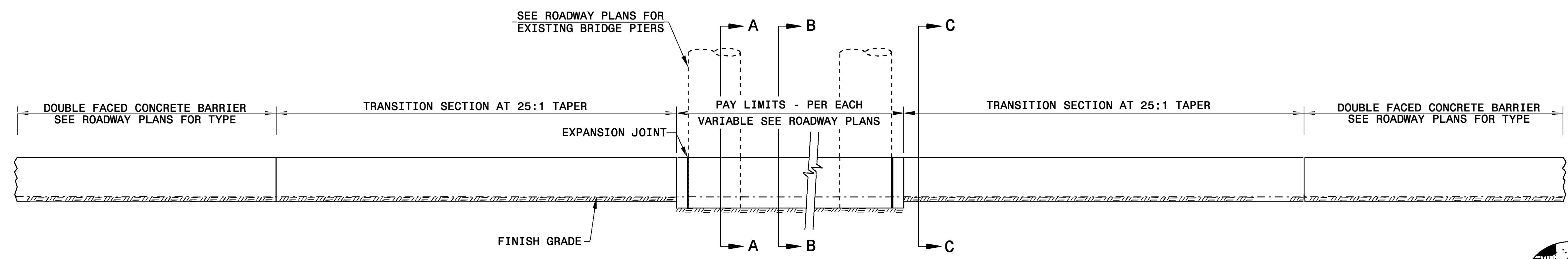


INSET 'B'

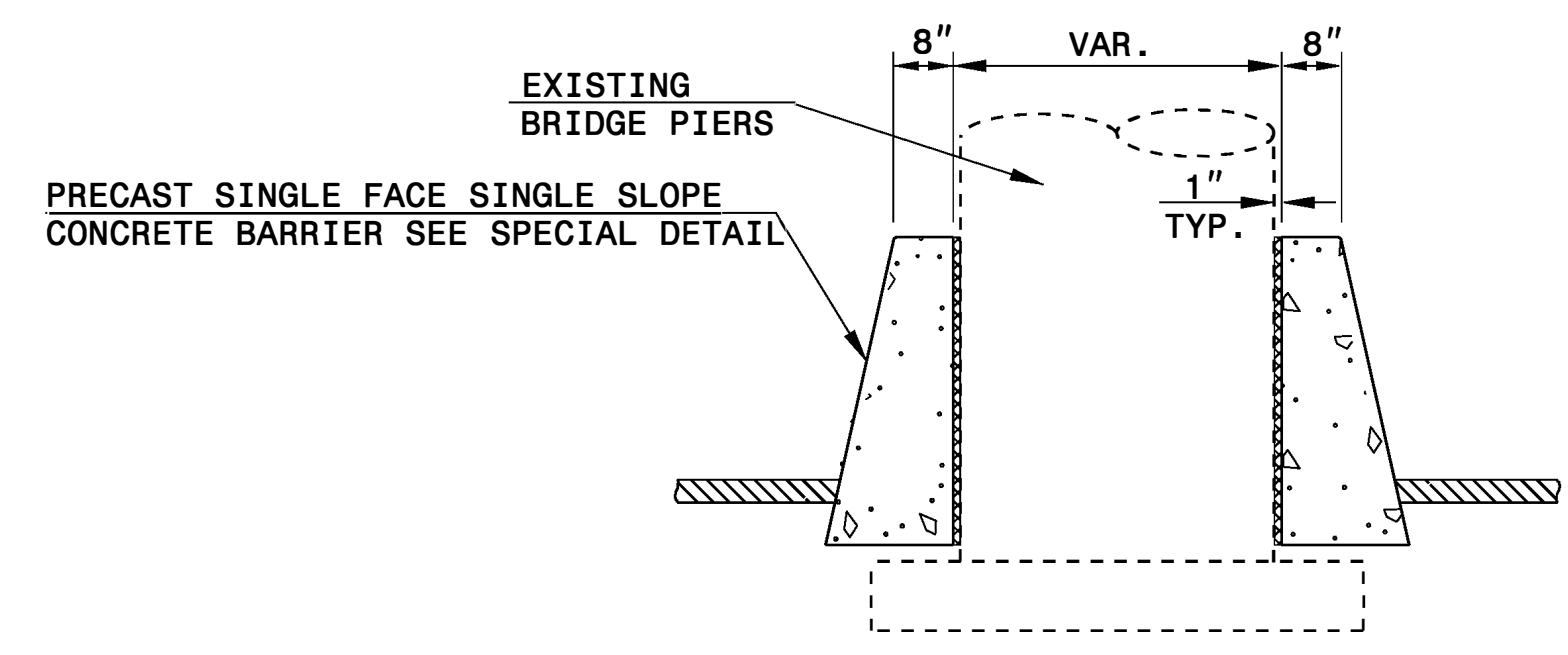


8" CONCRETE ENDWALL

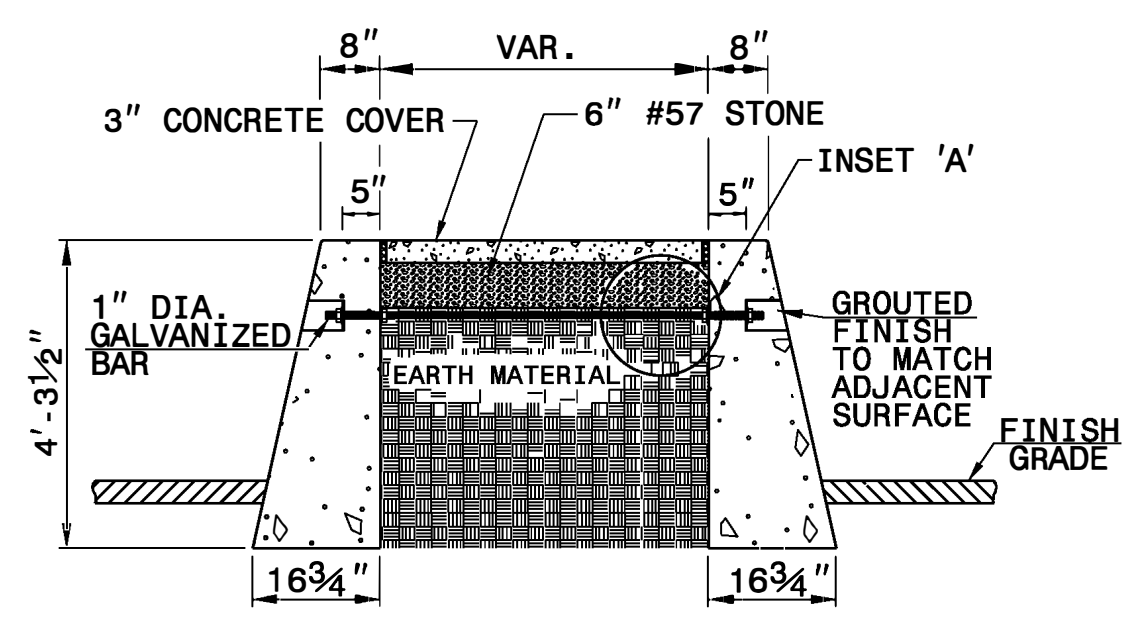
GENERAL NOTES:
 CONSTRUCT CONCRETE BARRIER WITH CLASS 'AA' CONCRETE. (SEE SPECIFICATIONS SECTION 854).
 CONSTRUCT EXPANSION AND CONTRACTION JOINTS AS SHOWN IN STANDARD DRAWING 854.01.
 SEAL EXPANSION JOINTS WITH JOINT FILLER. (SEE SECTION 1028 OF THE SPECIFICATIONS).
 SEE SPECIAL DETAILS PERTAINING TO SINGLE SLOPE BARRIERS FOR CONSTRUCTION METHODS AND STEEL PLACEMENT.
 SUBMIT ALTERNATIVE METHODS FOR STEEL FABRICATION PLACEMENT FOR REVIEW AND APPROVAL.
 SEE STANDARD DRAWING 854.05 FOR STEEL LAYOUT OF TRANSITION BARRIER.
 *THE 2" DIMENSION FROM FINISH GRADE TO THE BASE IS A MINIMUM DIMENSION.
 INSET FIRST 1" DIA. GALVANIZED BAR 12'-6" AND SPACE THE REMAINING 1' BARS AT 25'-0".
 USE AN APPROVED BONDING SYSTEM IN ACCORDANCE WITH SECTION 1081 OF THE STANDARD SPECIFICATIONS.



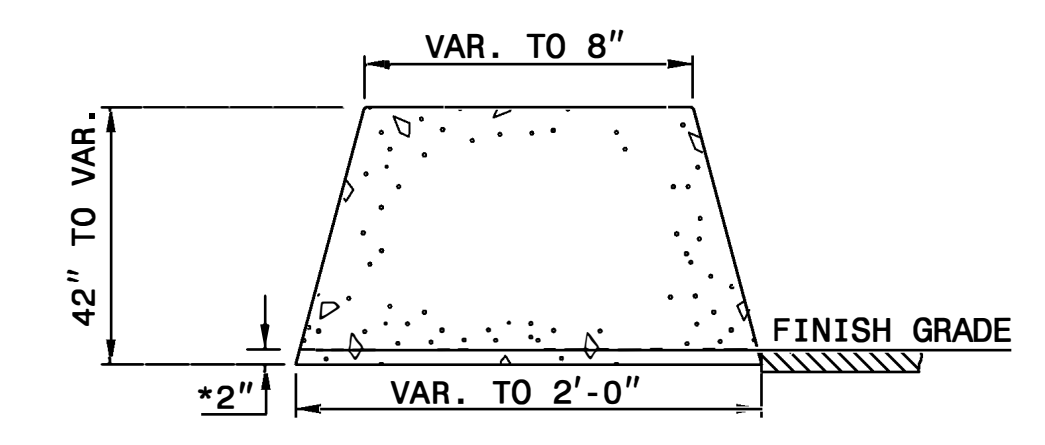
ELEVATION



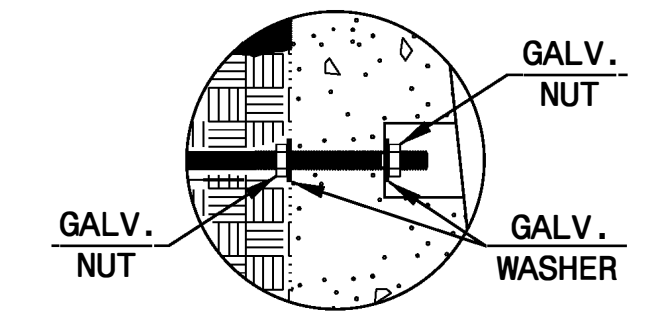
SECTION A-A



SECTION B-B



SECTION C-C



INSET 'A'

**CONTRACT STANDARDS
AND DEVELOPMENT UNIT**
 Office 919-707-6950 FAX 919-250-4119

**MEDIAN HAZARD
PROTECTION**

ORIGINAL BY: E.E. WARD	DATE: 7-28-03
MODIFIED BY: K.A. KEMPF	DATE: 5-08-19
CHECKED BY:	DATE:
FILE SPEC.: britt/english/guardrail/single slope concrete barrier.dgn	

10-MAY-2019 12:09
 S:\Contracts\Special Details\guardrail\single slope concrete barrier.dgn
 Jhoverton AT USD-292595