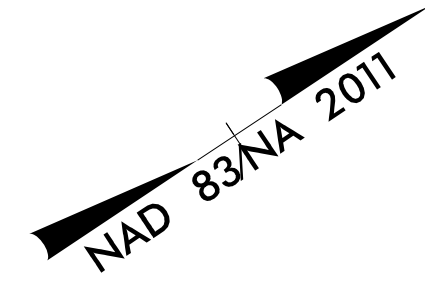
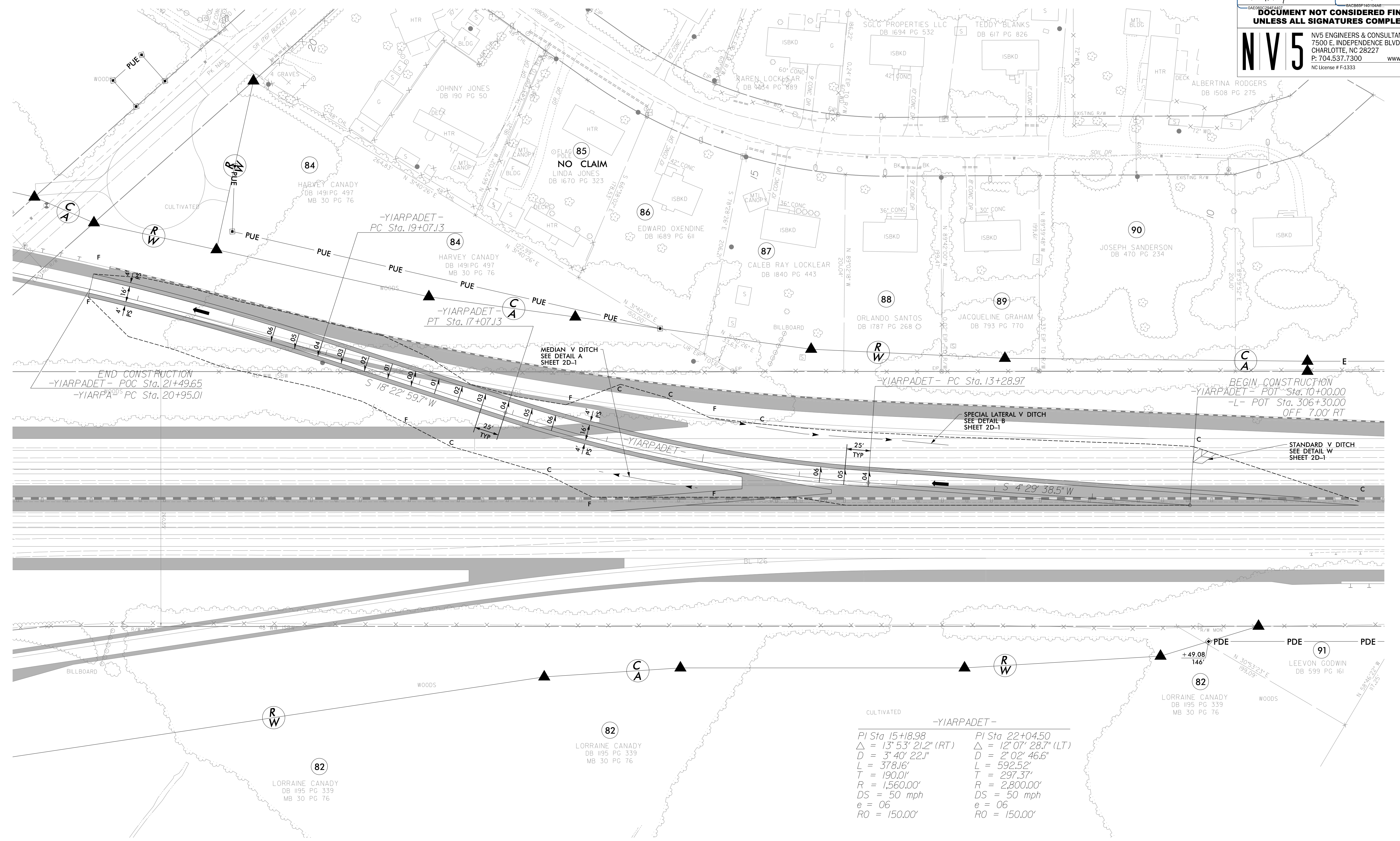


DETAIL OF TEMPORARY ON-SITE DETOUR FOR -YIARPA-

TO BE CONSTRUCTED DURING TRANSITION BETWEEN PHASE 2B & PHASE 3



| | | | |
|--|--|--|--|
| PROJECT REFERENCE NO. 1-5987A | | SHEET NO. 2B-5 | |
| RW SHEET NO. | | HYDRAULICS ENGINEER | |
| ROADWAY DESIGN ENGINEER 5/18/2022 | | 5/19/2022 | |
| | | | |
| Designed by: Steve Anthony Dean | | Designed by: Will Weatherbee | |
| DOCUMENT NOT CONSIDERED FINAL | | | |
| UNLESS ALL SIGNATURES COMPLETED | | | |
| NV5 | | NV5 ENGINEERS & CONSULTANTS, INC. 7500 E. INDEPENDENCE BLVD, STE 100 CHARLOTTE, NC 28227 P: 704.537.7300 www.NV5.com NC License # F-1333 | |



| -YIARPADET- | |
|---------------------------------------|---------------------------------------|
| PI Sta 15+18.98 | PI Sta 22+04.50 |
| $\Delta = 13^{\circ} 53' 21.2''$ (RT) | $\Delta = 12^{\circ} 07' 28.7''$ (LT) |
| $D = 3^{\circ} 40' 22.1''$ | $D = 2^{\circ} 02' 46.6''$ |
| $L = 378.16'$ | $L = 592.52'$ |
| $T = 190.01'$ | $T = 297.37'$ |
| $R = 1,560.00'$ | $R = 2,800.00'$ |
| $DS = 50$ mph | $DS = 50$ mph |
| $e = 06$ | $e = 06$ |
| $RO = 150.00'$ | $RO = 150.00'$ |

FOR -YIARPADET- PROFILE SEE SHEET 97
FOR DITCH DETAILS SEE SHEETS 2D-1 AND 2D-2