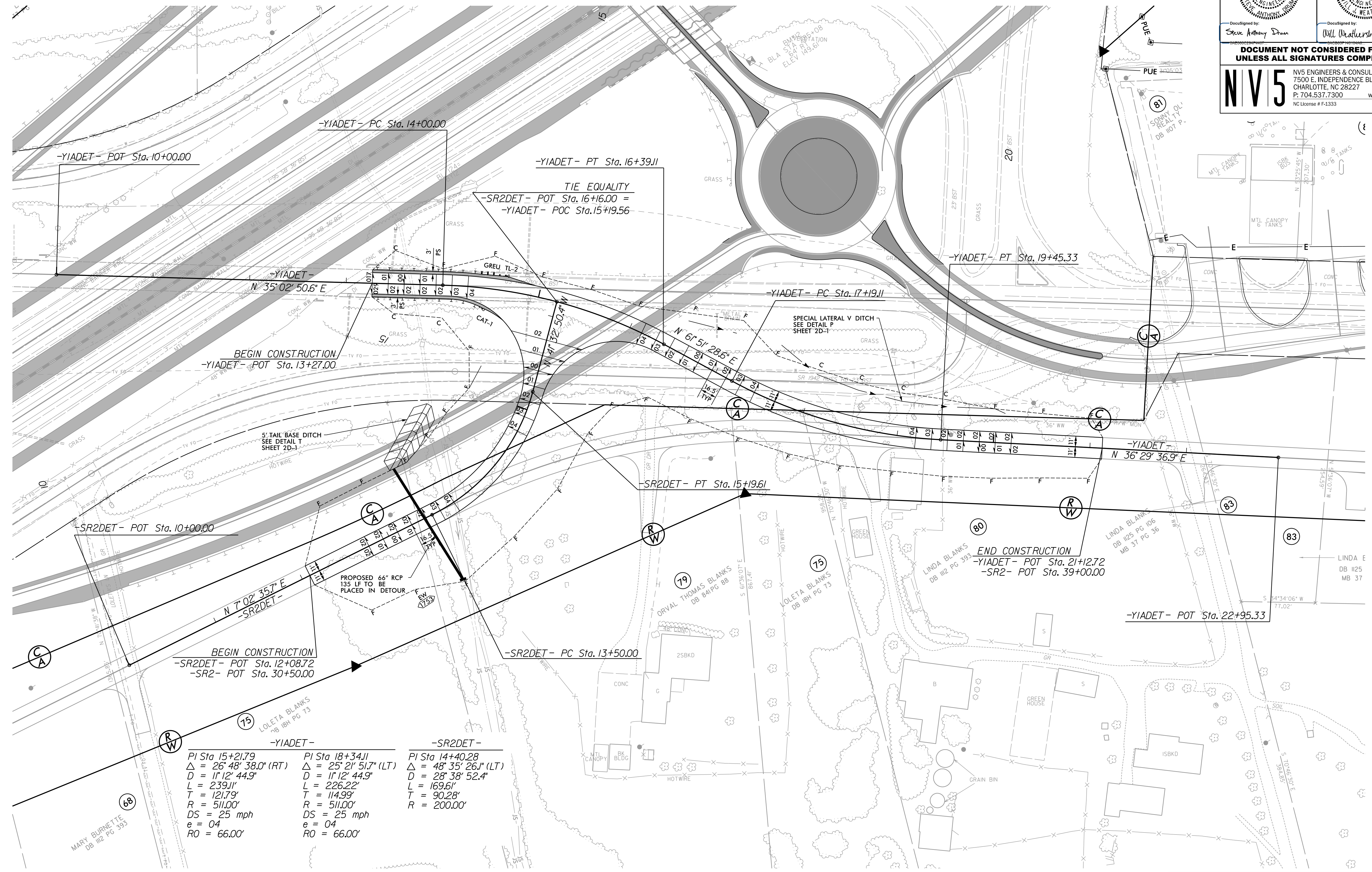
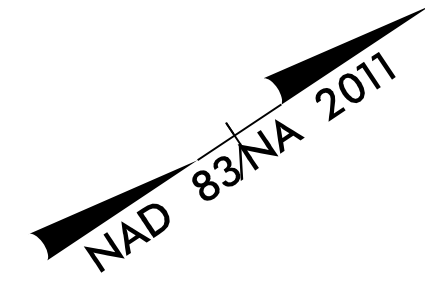


8.17/2022

DETAIL OF TEMPORARY ON-SITE DETOUR FOR -SR2- & -Y1A- TO BE CONSTRUCTED DURING PHASE 2A

PROJECT REFERENCE NO. 1-5987A	SHEET NO. 2B-4
RW SHEET NO.	
ROADWAY DESIGN ENGINEER 5/18/2022	HYDRAULICS ENGINEER 5/19/2022
DocuSigned by: Steve Anthony Dean	DocuSigned by: Will Weatherly
DOCUMENT NOT CONSIDERED FINAL UNLESS ALL SIGNATURES COMPLETED	
NV5 NV5 ENGINEERS & CONSULTANTS, INC. 7500 E. INDEPENDENCE BLVD, STE 100 CHARLOTTE, NC 28227 P: 704.537.7300 www.NV5.com NC License # F-1333	



5/18/2022
F:\Projects\15987A\RDY_PSH_2B-4.dgn

FOR -Y1A DETOUR- AND -SR2 DETOUR- PROFILE SEE SHEET 96
FOR DITCH DETAILS SEE SHEETS 2D-1 AND 2D-2