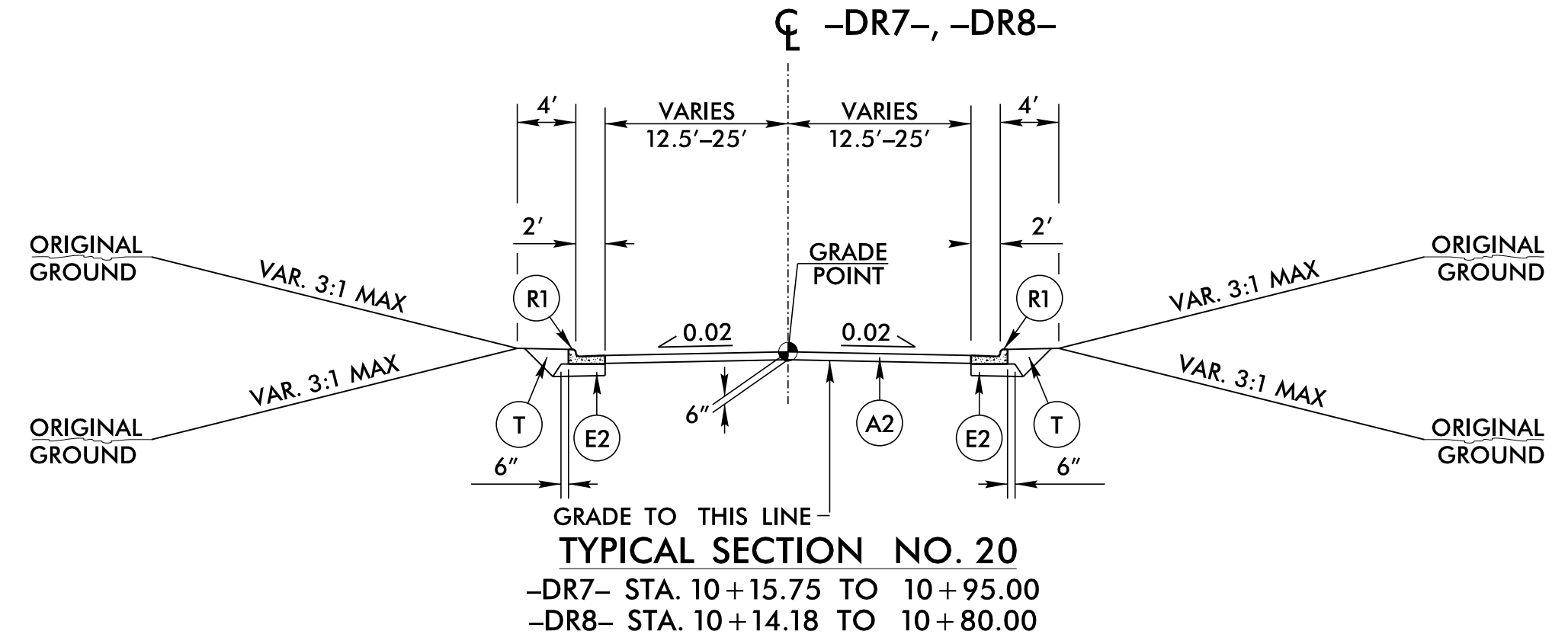
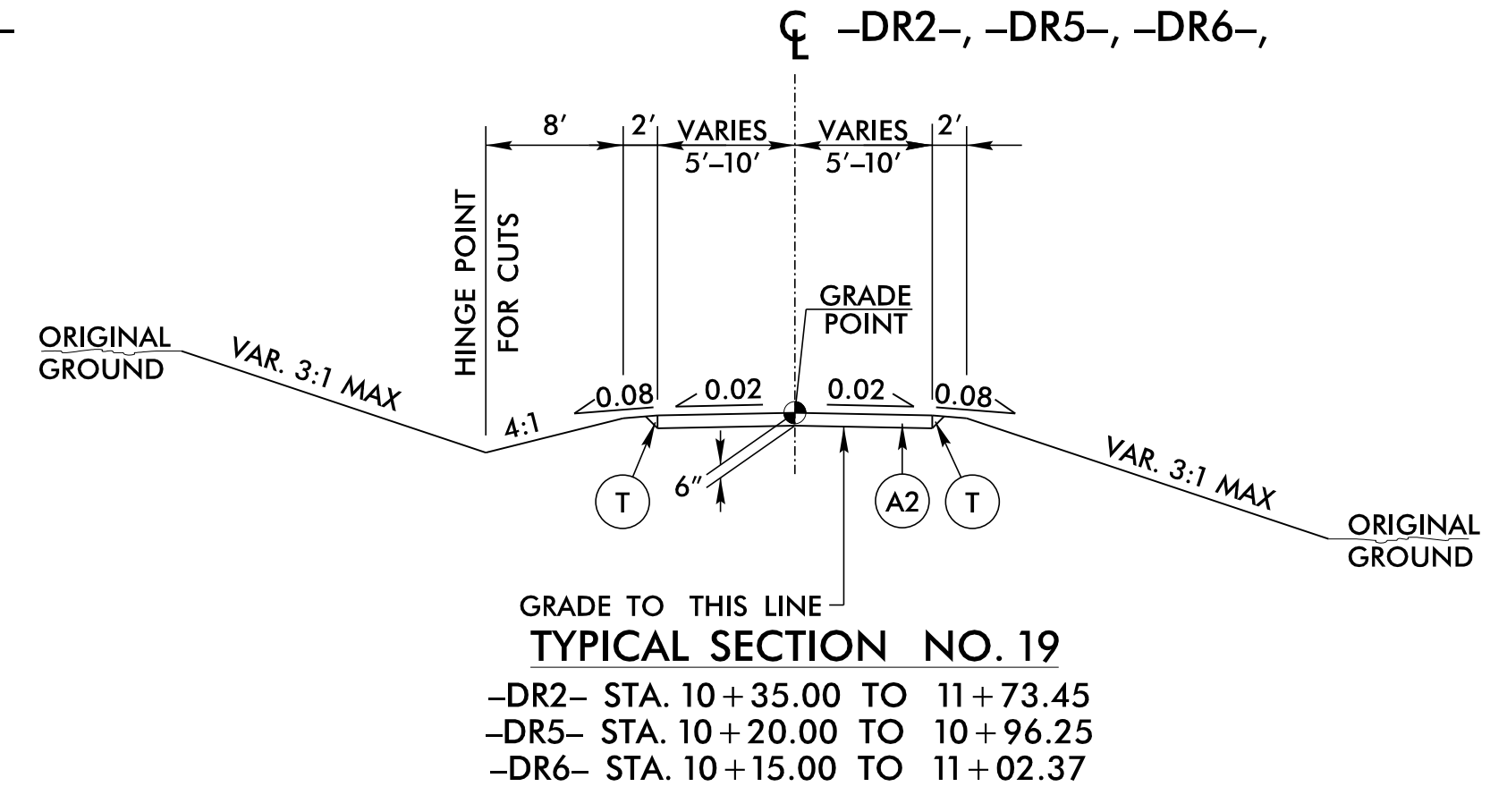
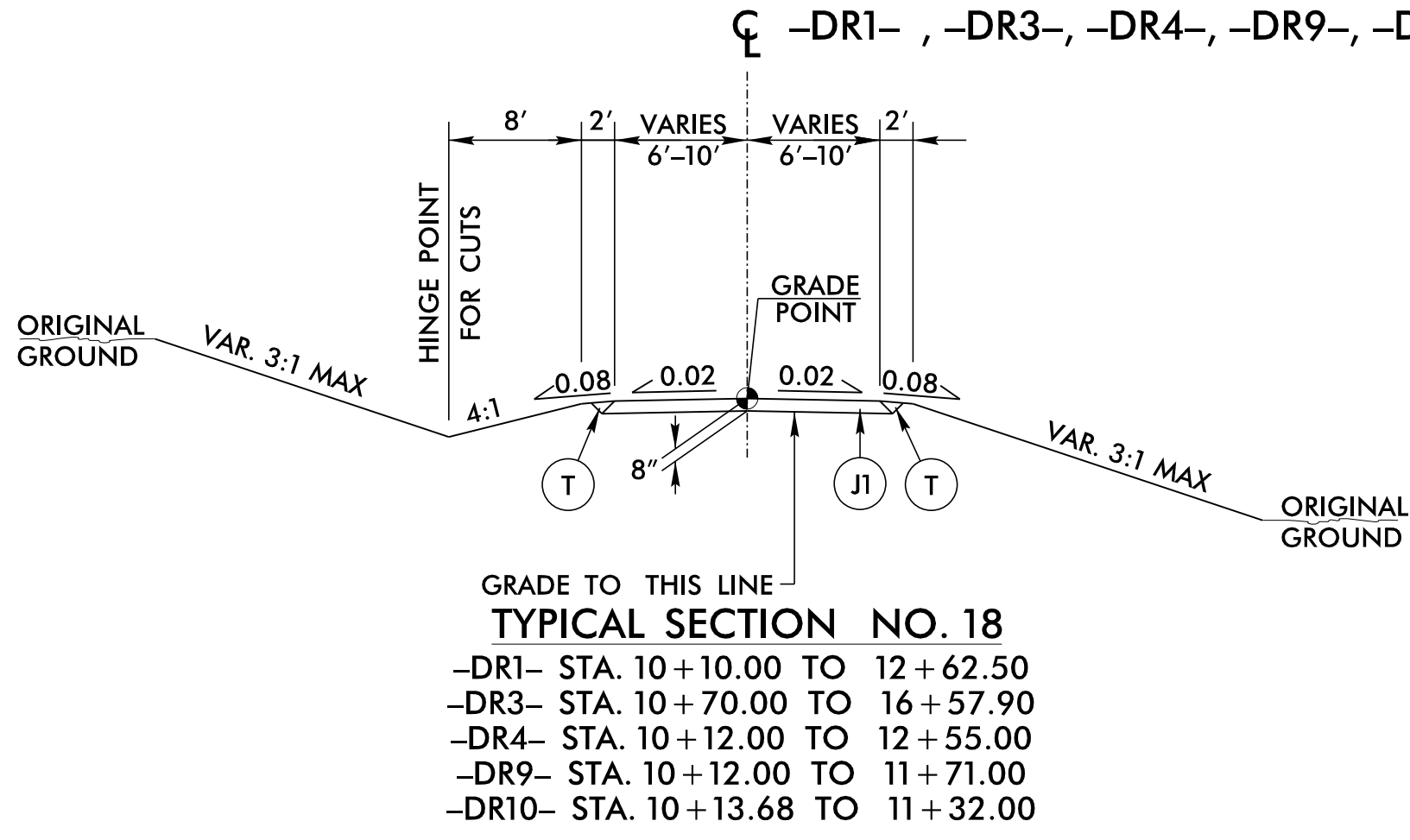
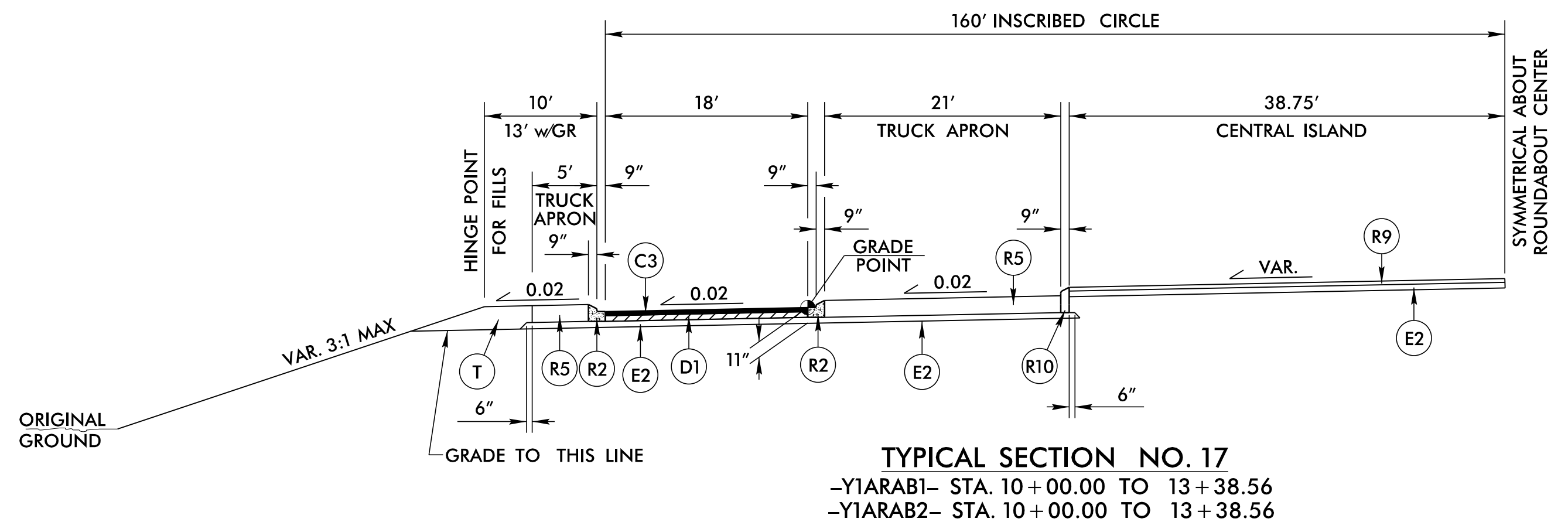
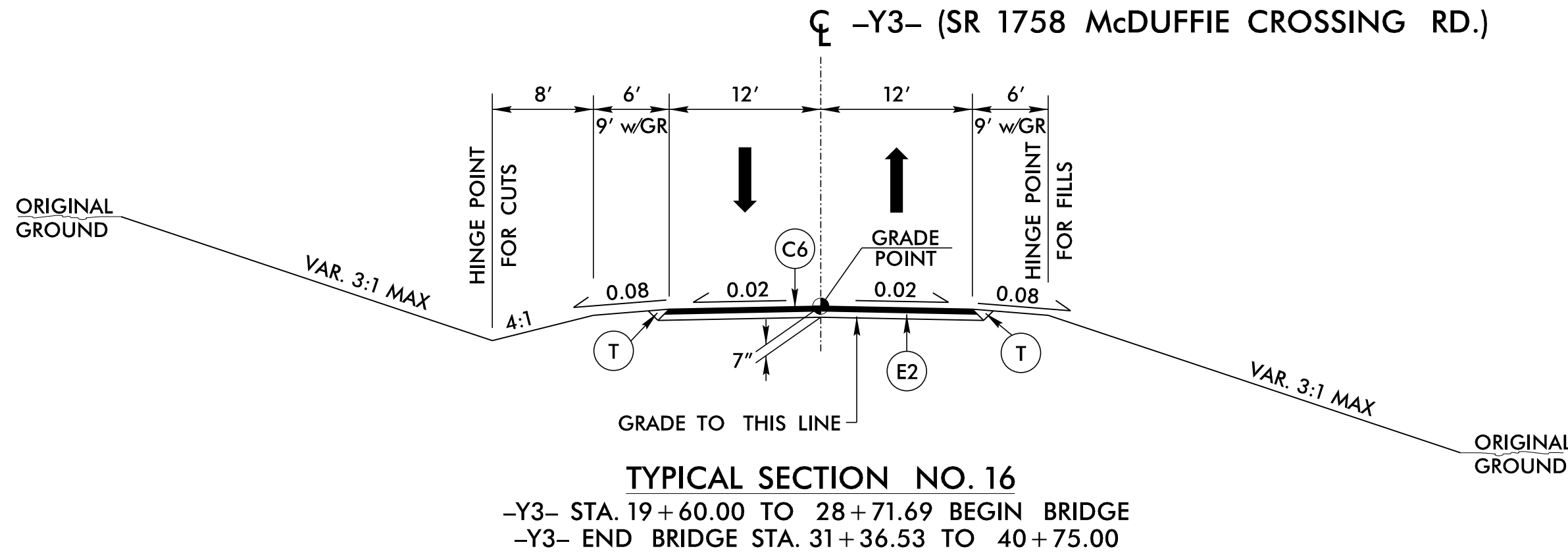
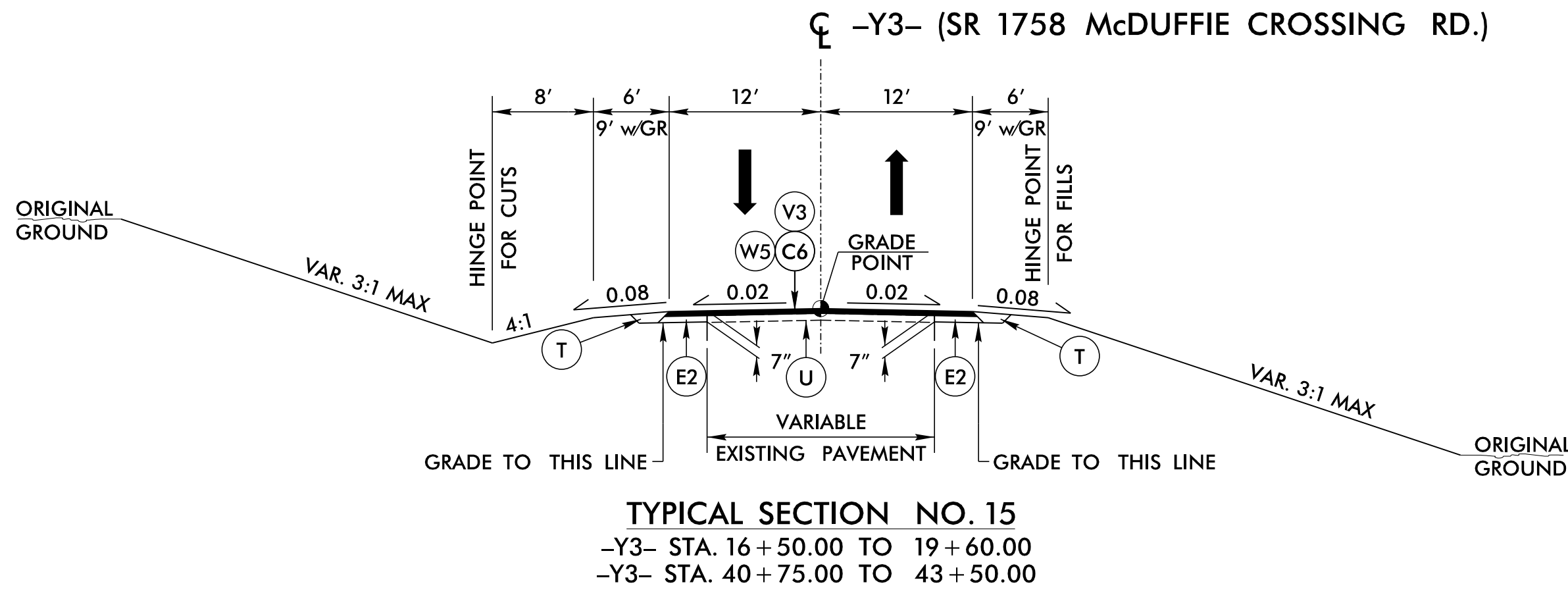
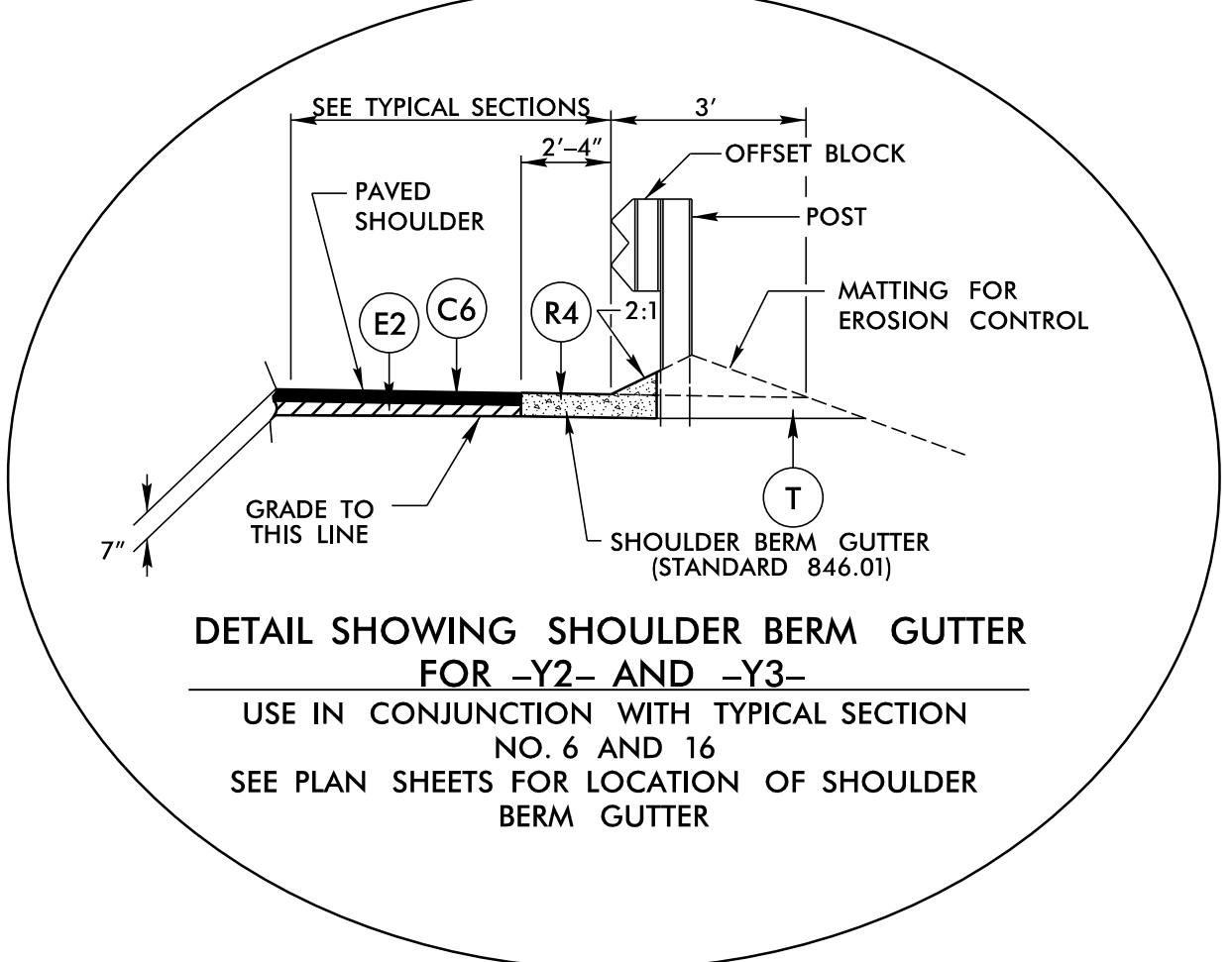


5/14/2022

PAVEMENT SCHEDULE	
A2	CONCRETE DRIVEWAY
C3	3" S9.5C
C6	3" S9.5B
D1	4" I19.0C
E2	4" B25.0C
J1	8" ABC
R1	2'-6" C&G
R2	1'-6" CURB & GUTTER
R4	SHOULDER BERM GUTTER
R5	12" CONC. TRUCK APRON
R9	4" CONC. COVER
R10	9"x18" CONC. CURB
T	EARTH MATERIAL
U	EXISTING PAVEMENT
V3	INCIDENTAL MILLING
W5	SEE WEDGING DETAIL 5

NOTE: PAVEMENT EDGE SLOPES ARE 1:1 UNLESS SHOWN OTHERWISE.



PROJECT REFERENCE NO. 1-5987A	SHEET NO. 2A-6
RW SHEET NO.	
ROADWAY DESIGN ENGINEER 5/18/2022	PAVEMENT DESIGN ENGINEER 5/18/2022
DOCUMENT NOT CONSIDERED FINAL UNLESS ALL SIGNATURES COMPLETED	
NV5 ENGINEERS & CONSULTANTS, INC. 7500 E. INDEPENDENCE BLVD, STE 100 CHARLOTTE, NC 28227 P: 704.537.7300 www.NV5.com NC License # F-1333	
4700 FALLS OF NEUSE ROAD, SUITE 300 RALEIGH, NORTH CAROLINA - 27609 (919) 781-4626 VOICE (919) 781-4869 FAX NC License No. F-0105	

5/18/2022 15:59:7A_RDY_TYP_SECA1.dgn